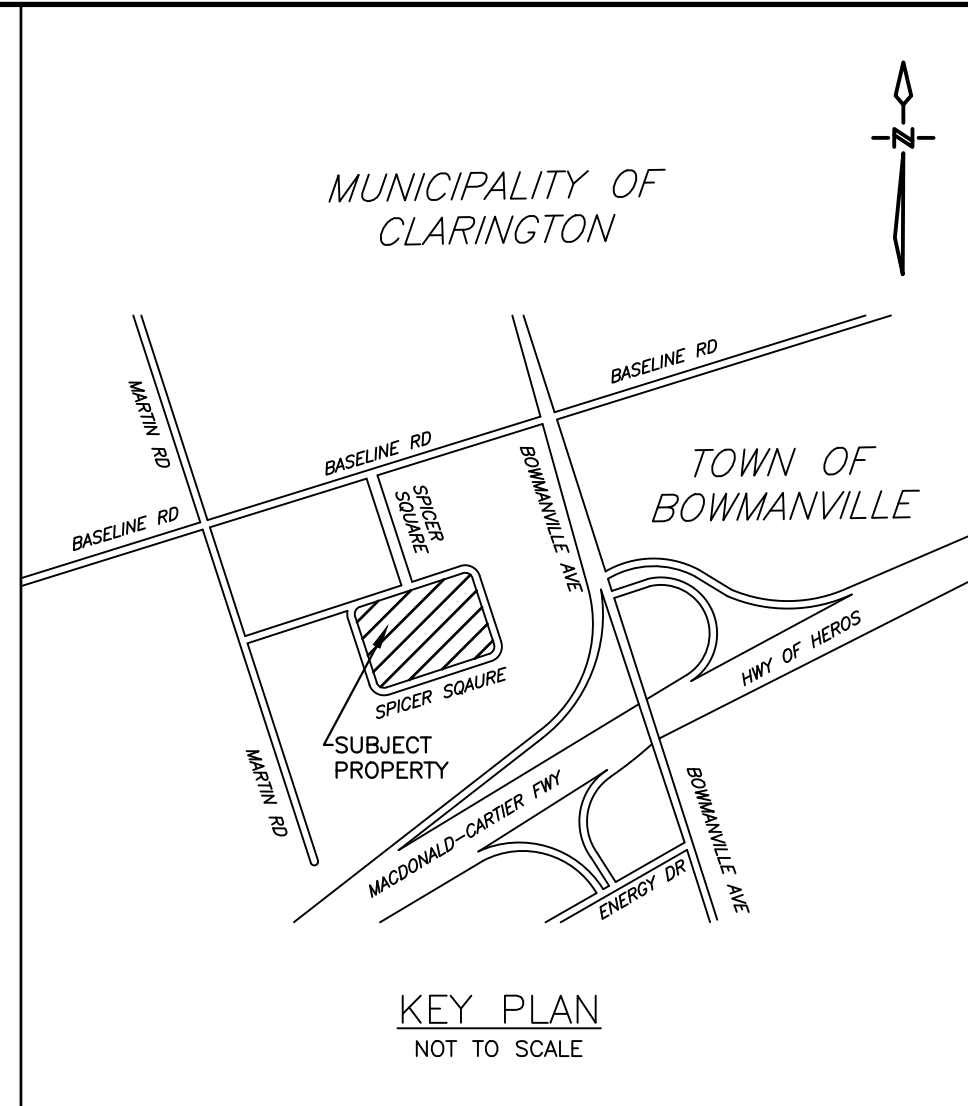
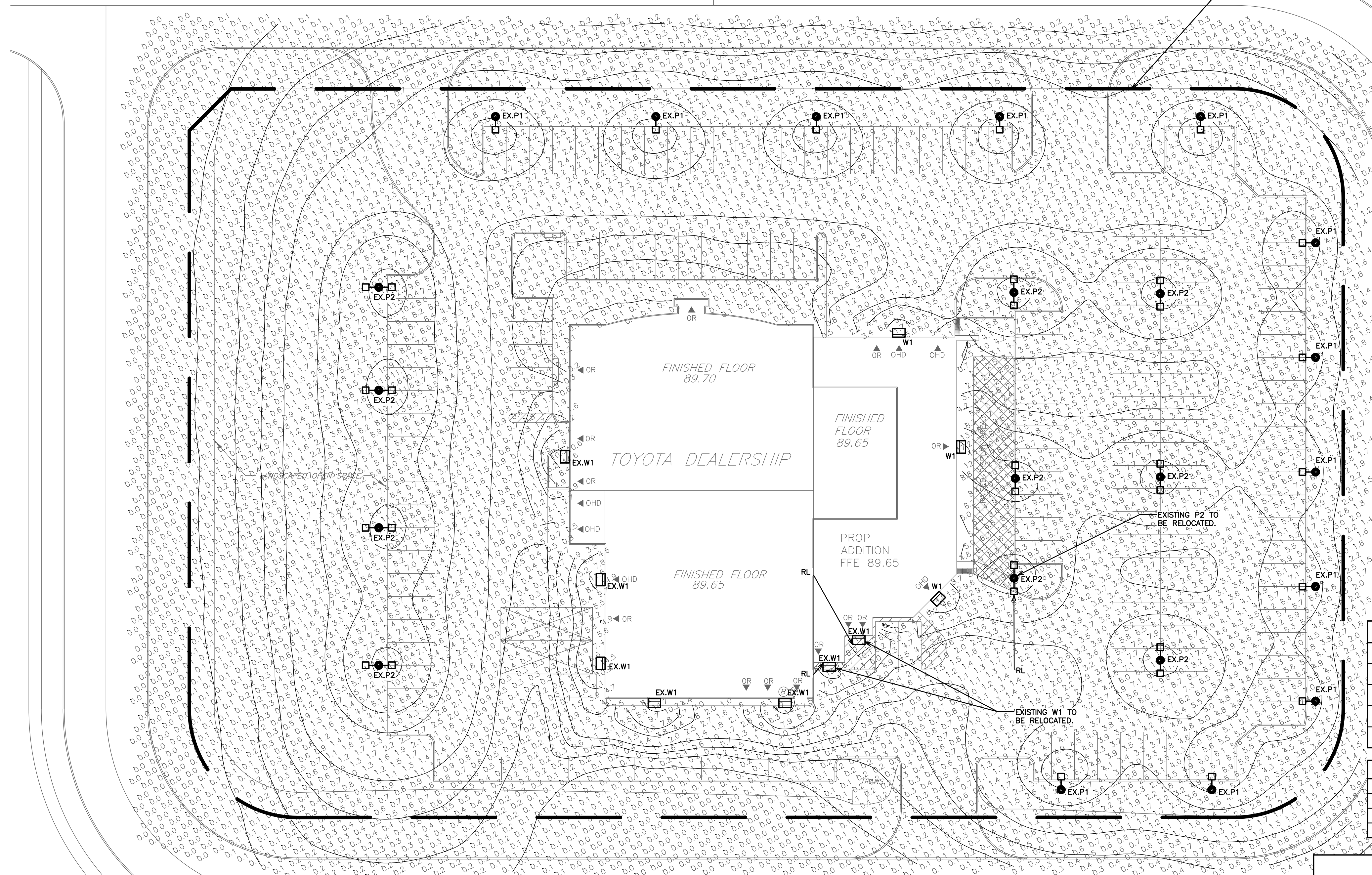


SPICER SQUARE



PHOTOMETRIC VALUES
MODELED AT 1.5m
ABOVE FINISHED GRADE.

PRELIMINARY
NOT FOR CONSTRUCTION

LEGEND

	POLE LIGHT WITH CONCRETE BASE
	DOUBLE HEAD POLE LIGHT WITH CONCRETE BASE
	WALL LIGHT
	PHOTOMETRIC VALUES (SHOWN IN FOOTCANDLES)
	ISOMETRIC LIGHT CURVES

SITE LIGHTING NOTES

- ALL NEW OUTSIDE LIGHTS TO BE CONTROLLED BY BUILDING PHOTOCELL AT HIGH LEVEL AND TIME SWITCH. COORDINATE CONTROLS AND POWER REQUIREMENTS WITH BUILDING DISTRIBUTION DRAWINGS.
- THIS DRAWING INDICATES ALL PROPOSED OUTDOOR LIGHTING FIXTURES FOR THIS PROPOSED DEVELOPMENT. THE LIGHTING DESIGN IS IN ACCORDANCE WITH THE APPLICABLE LIGHTING ZONE AS ESTABLISHED BY THE PLANNING DEPARTMENT, AND DESIGNED WITH AN AVERAGE TO MINIMUM RATIO IN ACCORDANCE WITH THE ILLUMINATING ENGINEERING SOCIETY GUIDELINES. THIS LIGHTING DESIGN WILL NOT CREATE ANY OBJECTIONABLE GLARE FOR ADJACENT PROPERTIES.
- CONTRACTOR TO BE RESPONSIBLE FOR LOCATION OF ALL EXISTING UNDERGROUND & OVERHEAD UTILITIES. VARIOUS UTILITIES CONCERNED TO BE GIVEN REQUIRED ADVANCE NOTICE PRIOR TO ANY DIGGING. FOR STAKE OUT, THE CONSULTANT ASSUMES NO RESPONSIBILITY FOR THE ACCURACY OF THE LOCATION OF EXISTING UTILITIES AS INDICATED ON THIS DRAWING.
- CONTRACTOR TO REVIEW LIGHT FIXTURE SHOP DRAWINGS WITH CLIENT AND ENGINEER PRIOR TO COMMENCEMENT OF WORK FOR FINAL APPROVAL.
- FINAL LOCATIONS OF WALL MOUNTED LIGHTING TO BE APPROVED BY ARCHITECT AND OWNER PRIOR TO COMMENCEMENT OF WORK.
- PHOTOMETRIC VALUES ARE SHOWN IN FOOTCANDLES WITH ISOMETRIC LIGHT CURVES.
- ALL LIGHT FIXTURES TO BE FULL CUT-OFF, DOWNLIGHTING ONLY, DARK SKY COMPLIANT.

STANDARD ABBREVIATIONS

AFG	ABOVE FINISHED GRADE
C/E	CONNECT TO EXISTING
C/W	COMPLETE WITH
EX	EXISTING
RL	RELOCATE

NUMERIC SUMMARY

LOCATION	AVERAGE	MAXIMUM	MINIMUM	AVG/MIN	MAX/MIN
ACCESSIBLE PARKING	0.33	0.60	0.20	1.65	3.00
CUSTOMER PARKING	3.37	12.20	0.10	33.70	122.00
DISPLAY VEHICLE PARKING	4.64	7.60	1.80	2.58	4.22

QUALIFIED DESIGNER SIGNOFF

THE FOLLOWING STATEMENT IS TO BE INCLUDED ON THE LIGHTING PLAN AND SIGNED BY THE QUALIFIED DESIGNER:

THIS DRAWING INDICATES ALL PROPOSED OUTDOOR LIGHTING FIXTURES FOR THIS PROPOSED DEVELOPMENT. THE LIGHTING DESIGN IS IN ACCORDANCE WITH THE APPLICABLE LIGHTING ZONE AS ESTABLISHED BY THE PLANNING DEPARTMENT, AND DESIGNED WITH AN AVERAGE TO MINIMUM RATIO IN ACCORDANCE WITH THE ILLUMINATING ENGINEERING SOCIETY GUIDELINES. THE LIGHTING DESIGN WILL NOT CREATE ANY OBJECTIONABLE GLARE FOR ADJACENT PROPERTIES.

SIGNATURE OF QUALIFIED DESIGNER



POLE SCHEDULE

TAG	MANUFACTURER	DESCRIPTION	HEIGHT	QTY	MODEL NUMBER	NOTES
A	EXISTING	EXISTING	7.3 m	EXISTING	EXISTING	REFER TO LIGHT POLE BASE DETAIL

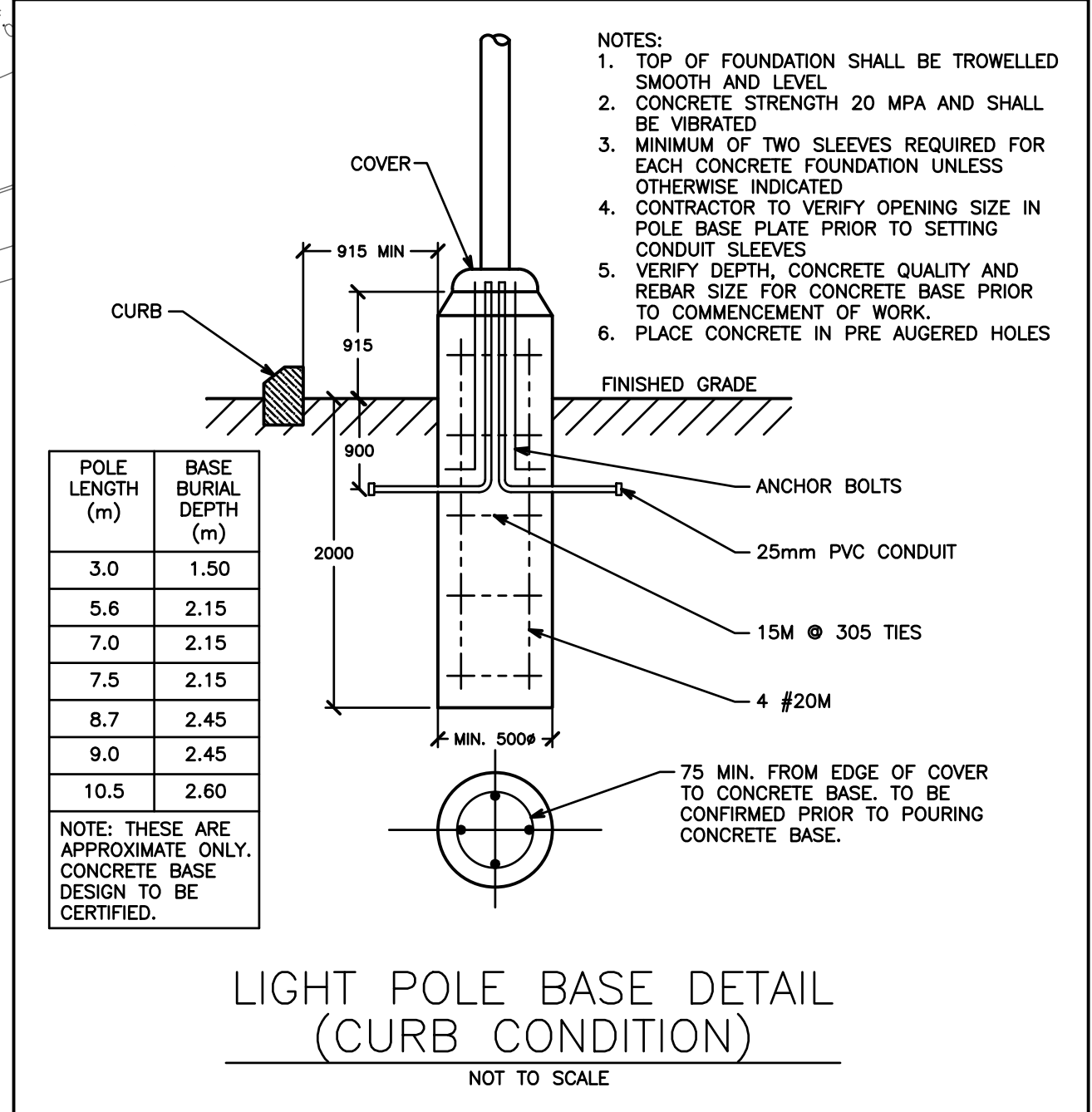
SITE LIGHTING SCHEDULE

POLE LIGHTS

TAG	SYMBOL	DESCRIPTION	POLE	WATTAGE	QTY	CCT	MODEL NUMBER	MOUNTING HEIGHT
EX.P1		CSC LED - EXISTING FL01P DAYMAKER SERIES SINGLE HEAD AREA LIGHTS - POLE MOUNT	A	EXISTING	EXISTING	EXISTING	EXISTING	8.2 m AFG
EX.P2		CSC LED - EXISTING FL01P DAYMAKER SERIES DOUBLE HEAD AREA LIGHTS - POLE MOUNT	A	EXISTING	EXISTING	EXISTING	EXISTING	8.2 m AFG

WALL LIGHTS

TAG	SYMBOL	DESCRIPTION	WATTAGE	QTY	CCT	MODEL NUMBER	MOUNTING HEIGHT
W1		MATCH TO EXISTING	MATCH TO EXISTING	3	MATCH TO EXISTING	MATCH TO EXISTING	4.1 m AFG
EX.W1		EXISTING MODEL	EXISTING	EXISTING	EXISTING	EXISTING	4.1 m AFG



1.	ISSUED FOR 1ST SUBMISSION	OCT 2024
NO.	SUBMISSION	DATE

CLARINGTON TOYOTA
10 SPICER SQUARE - BOWMANVILLE, ON

SITE LIGHTING PHOTOMETRIC PLAN

96 King Street East
Oshawa, Ontario, L1H 1B6
Phone: 905-576-8500
info@dgbiddle.com
dgbiddle.com

D.G. BIDDLE & ASSOCIATES
CONSULTING ENGINEERS & PLANNERS

G.V.W. OSBORNE
100136545
OCT 22/24
PROVINCE OF ONTARIO

SCALE: 1:300

DESIGNED BY: F.K.

CHECKED BY: G.V.W.O.

PROJECT NO.: 124046

DRAWING NO.: SL-1

23/10/2024 S:\STAFF\JOB FILES\124046 CLARINGTON TOYOTA\124046 ENGINEERING DRAWINGS\24046 SITE LIGHTING\124046 SL