

EXISTING RETAINING WALL TO REMAIN AND EXISTING FENCE TO BE REPLACED

CONCRETE RETAINING WALL BY OTHERS

CONIFEROUS TREE PLANTING

SHRUBS PLANTING DETAIL --- CONTINUOUS BED

LEGEND

- TREE PRESERVATION FENCE (AS PER ARBORIST PLAN AND REPORT)
- SNOW STORAGE AREAS
- EXISTING RETAINING WALL TO REMAIN

HIGH ALBEDO MATERIALS

ALL CONCRETE & UNIT PAVING COLOURS ARE TO BE HIGH ALBEDO WITH A MINIMUM 29 SRI VALUE UNLESS OTHERWISE STATED.

- CONCRETE COLOUR IS TO BE HIGH ALBEDO (MINIMUM 29 SRI)

NOTE:

ALL CONCRETE PAVING ON SITE TO HAVE A MINIMUM SRI VALUE OF 29, MAKING UP 89% OF SITE HARDSCAPES (NOT INCLUDING SURFACE PARKING).

- 11 L-D1 MAGLIN BIKE RACK MBR150-S
- 4 L-D2 1.524M HT BLACK DECORATIVE METAL FENCE
- 1 L-D1 SOD OVER 150MM TOPSOIL
- 7 L-D1 NATURAL CONCRETE PAD
- 2 L-D2 PEDESTRIAN CROSSING PAINT LINE
- 14 L-D1 ACCESSIBLE PARKING SIGN
- 8 L-D1 UNILOCK BRUSSELS BLOCK PAVER BAND
- 2 L-D1 DECIDUOUS TREE PLANTING
- 10 L-D1 MAGLIN BENCH MLB720W
- 5 L-D1 ARMOURSTONE
- 6 L-D1 WATER WASHED STONE
- 12 L-D1 FIRE ACCESS ROUTE SIGN
- 8 L-D2 1.80M HEIGHT MASONRY PILLAR - CUBOID PRECAST CONCRETE CAP
- 9 L-D2 MAGLIN TRASH CONTAINER MLWR1050 W
- 4 L-D1 TOWN OF AJAX - PLANTING NOTES
- 3 L-D1 SHRUBS PLANTING DETAIL --- CONTINUOUS BED
- 2 L-D2 PEDESTRIAN CROSSING PAINT LINE
- 5 L-D2 1.524M HT BLACK DECORATIVE SINGLE SWING METAL GATE

REFERENCE NOTES SCHEDULE

SYMBOL	DESCRIPTION	QTY	DETAIL
Site Furnishings			
	Maglin MLB720-W Bench	2	10/L-D1
	Bike Rack - Maglin MBR150-S	8	11/L-D1
	Maglin MLWR1050-PC MLWR1050-PC Trash Container. 755mm Height, 535mm Width and Depth. Formed steel frame construction with paper composite panels. 121 Litres. Frame: Black Gloss Panels: Sandstone HDPC	1	9/L-D2
32 EXTERIOR IMPROVEMENTS			
	Water Washed Stone	1.3 m ²	6/L-D1
	Armourstone In Planting Bed	3	5/L-D1
Concrete Paving			
	Concrete Paving with 200mm depth of 19mm Crusher Run Limestone	411.3 m ²	7/L-D1
Unit Paving			
	Unilock Brussels Block Paver - Pattern A. Colour: Sierra	48.0 m ²	8/L-D1
Curbs and Gutters			
	Tactile Walking Surface Indicators	6.1 m ²	1/L-D2
Walls and Steps			
	Concrete Retaining Wall	23.1 m	
Fences and Gates			
	1.524m ht Decorative Metal Fence	315.3 m	4/L-D2
	1.524m ht Single Swing Metal Gate	2	5/L-D2
	1.524m ht Double Swing Metal Gate	2	6/L-D2
Pillars			
	1.8m ht Masonry Pillar	10	8/L-D2
Identification Devices			
	Accessible Parking Sign	3	14/L-D1
	Fire Route Sign	5	12/L-D1
	Line Painting	54.4 m ²	2/L-D2
	Steel post Bollard	7	/
Turf & Grasses			
	Sod over 150mm Topsoil	2,329 m ²	1/L-D1

LOCATION MAP



GENERAL NOTES

THE LOCATION OF PROPERTY LINES, ELEVATIONS AND FACILITIES ON THIS PLAN WERE DRAWN ON THE BASIS OF A DIGITAL SITE PLAN OR SURVEY DATA PROVIDED BY OTHER CONSULTANTS.

IT IS THE RESPONSIBILITY OF THE CLIENT AND HIS CONTRACTORS TO CONFIRM THE ACCURACY OF THE SETBACKS, LOCATIONS AND GRADES ETC. ANY VARIATIONS BETWEEN EXISTING CONDITIONS AND THIS PLAN SHOULD BE ADJUSTED ON SITE AND REPORTED TO THE CONSULTING LANDSCAPE ARCHITECT TO DETERMINE THE IMPACT OF THE VARIATIONS ON THE SUITABILITY OF THE PROPOSED DEVELOPMENT.

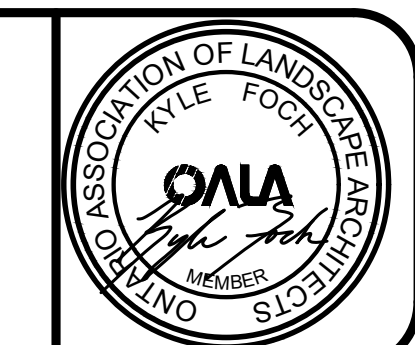
CONSTRUCTION MUST CONFORM TO ALL CODES AND REQUIREMENTS OF AUTHORITIES HAVING JURISDICTION.

REVISIONS

NO.	DATE	NOTES	BY
4	2025-04-30	ISSUED SPA	CT
3	2025-04-08	REVISED LANDSCAPE PLAN	RW
2	2024-04-11	REVISED LANDSCAPE PLAN	YW
1	2023-11-15	LANDSCAPE PLAN	YW

THESE LANDSCAPE DRAWINGS SHALL ONLY BE USED FOR THE PURPOSES INDICATED BELOW AS NOTED AND WHEN SIGNED BY THE CONSULTING LANDSCAPE ARCHITECT.

	CONCEPTUAL		TENDER
	PRELIMINARY		CONTRACT
	SITE PLAN		CONSTRUCTION
	PERMIT		AS-BUILT



HLA

Landscape Architects & Consulting Arborists

230 Westney Road S Unit 308, Ajax, ON L1S 7J5

O: (905) 836-5566 | Email: info@hla.ca | Web: www.hla.ca

THESE DRAWINGS ARE INSTRUMENTS OF SERVICE AND THE LANDSCAPE ARCHITECT RETAINS OWNERSHIP OF THESE DRAWINGS. THEY ARE FOR SITE PLAN APPROVAL ONLY AND MAY REQUIRE FURTHER CONSTRUCTION DETAILING AND COORDINATION WITH OTHER ASSOCIATED PROFESSIONAL DESIGN SERVICES BEFORE ACTUAL TENDER AND CONSTRUCTION COMMENCES. DIMENSIONS ARE TO BE VERIFIED PRIOR TO CONSTRUCTION. DRAWINGS ARE NOT TO BE SCALED. IT IS ADVISED THAT CONTRACTORS CONTACT THE LANDSCAPE ARCHITECT PRIOR TO CONSTRUCTION TO ENSURE THE USE OF THE LATEST REVISED DRAWINGS. THE LANDSCAPE ARCHITECT IS NOT LIABLE FOR ERRORS OR OMISSIONS ARISING FROM UTILIZATION OF THESE PLANS BEFORE THE SAID DRAWINGS ARE SEALED, SIGNED AND DATED. AND THE LANDSCAPE ARCHITECT IS CONTRACTED TO PROVIDE CONSTRUCTION ADMINISTRATION AND CERTIFICATION SERVICES BY THE OWNER. ALL APPARENT DISCREPANCIES ARE TO BE REPORTED IN WRITING TO THE LANDSCAPE ARCHITECT BEFORE CONSTRUCTION COMMENCES.

PROJECT: SPA FILE #

725 Westney Road South
Ajax, Ontario

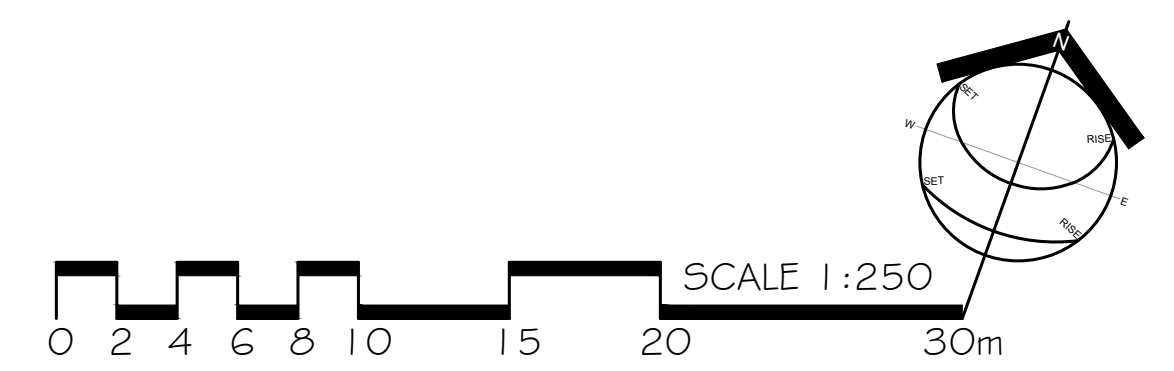
DRAWING: LANDSCAPE PLAN

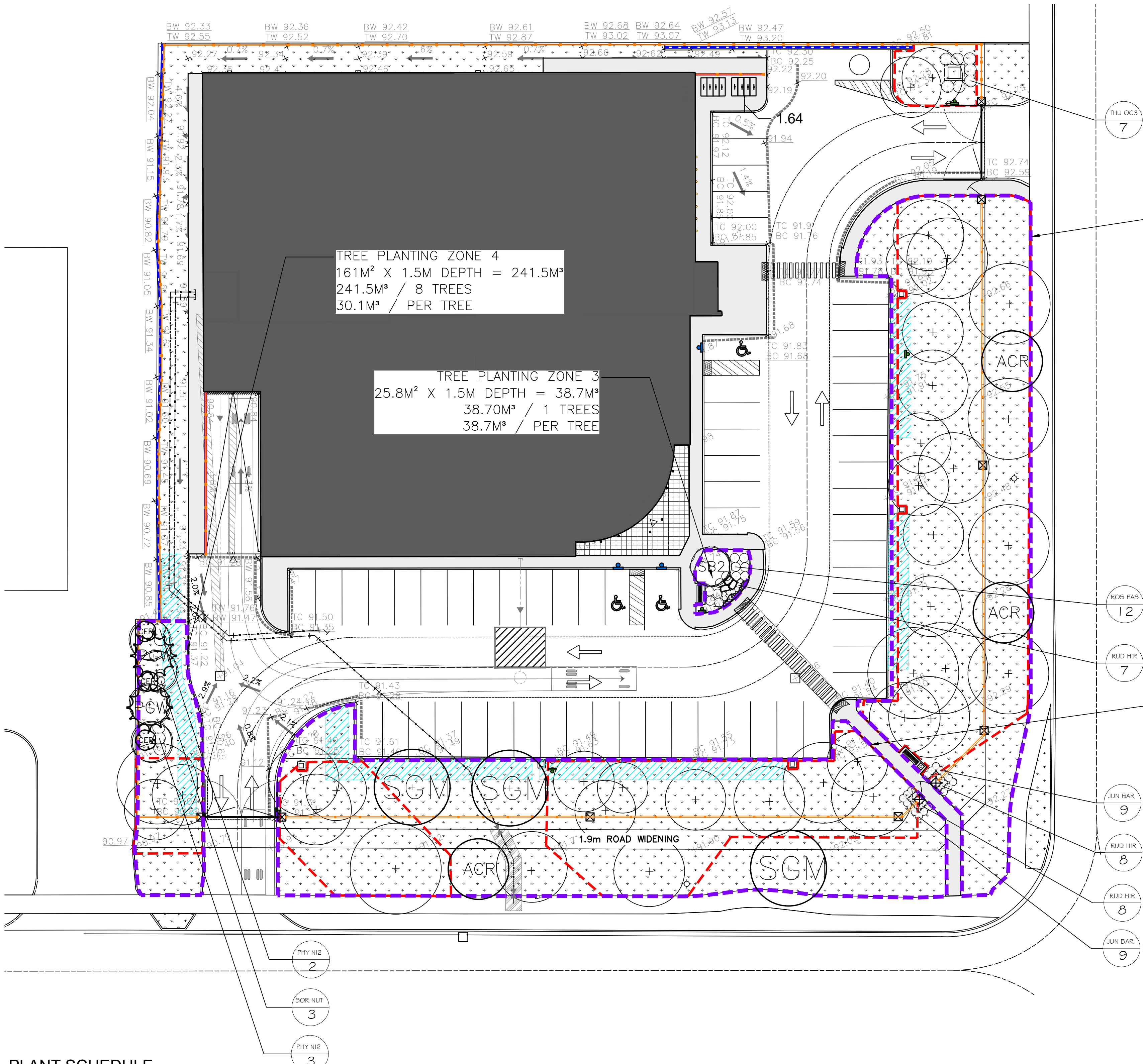
DRAWN BY: YW
CHECKED BY: TM
JOB NO.: 2023-104.

SCALE: 1:250
DATE: 2023-11-15

L-L1
DRAWING 1 of 4

File #2023-104.





PLANT SCHEDULE

CODE	QTY	BOTANICAL NAME	COMMON NAME	SIZE	CONT	REMARKS
TREES						
ACR	3	Acer rubrum	Red Maple	60mm Cal.	W.B.	DT/N
SGM	3	Acer saccharum	Sugar Maple	70mm Cal.	W.B.	N
SB2	1	Amelanchier canadensis	Serviceberry	150cm Ht. Multistem	W.B.	DT/N
C&L PRS	3	Celtis occidentalis 'JFS-KSU 1'	Prairie Sentinel® Hackberry	60mm Cal.	W.B.	DT/N
PGW	2	Picea glauca	White Spruce	175cm Ht.	W.B.	N
SHRUBS						
JUN BAR	18	Juniperus horizontalis 'Bar Harbor'	Bar Harbor Creeping Juniper	30cm Ht.	Potted	DT/N
PHY N12	5	Physocarpus opulifolius	Ninebark	50cm Ht.	Potted	DT/N
ROS PAS	12	Rosa carolina	Carolina Rose	50cm Ht.	Potted	DT/N
SOR NUT	3	Sorghastrum nutans	Indian Grass	1 gal	Potted	DT/N
THU OC3	7	Thuja occidentalis	Eastern White Cedar Hedge Form	150cm Ht.	Native Field Cedar	N
PERENNIALS						
RUD HIR	23	Rudbeckia hirta	Black-eyed Susan	1 gal	1 Gal. Pot	DT/N

NOTES:

- * 100% OF PLANT SPECIES ARE NATIVE
- * 86% OF PLANT SPECIES ARE DROUGHT TOLERANT
- * A MINIMUM OF ONE TREE EXISTS ON SITE PER FIVE SURFACE PARKING SPACES

LEGEND

- TREE PRESERVATION FENCE (AS PER ARBORIST PLAN AND REPORT)
- SNOW STORAGE AREAS
- EXISTING RETAINING WALL TO REMAIN
- TREE PLANTING AREA

WATERING PROGRAM

WATERING BAGS USING NON-POTABLE WATER THROUGH RAINWATER HARVESTING (TREGATOR OR APPROVED ALTERNATIVE) MUST BE USED TO HELP WATER NEWLY INSTALLED TREES FOR THE FIRST 2 YEARS. THESE WATER BAGS ARE NOT ALLOWED TO RUN DRY OVER THE GROWING SEASON.

TOPSOIL

CONTRACTOR TO CONDUCT SOIL TEST TO CONFIRM SUITABILITY OF EXISTING SOIL FOR REUSE AS PLANTING GROWTH MEDIUM. AMEND SOIL AS NEEDED TO MEET SOIL SPECIFICATION.

PLANTING NOTES

MATERIAL REQUIREMENTS

- PLANT MATERIAL LISTED IN THE PLANT SCHEDULE ARE MINIMUM SIZES OF NURSERY GROWN AND UNIFORM SPECIMENS. NO SUBSTITUTIONS WILL BE PERMITTED WITHOUT WRITTEN APPROVAL FROM THE LANDSCAPE ARCHITECT.
- DECIDUOUS TREES SHALL HAVE A STRAIGHT CENTRAL LEADER AND WELL BRANCHED 1.5m ABOVE GRADE UNLESS OTHERWISE STATED.
- CONIFEROUS TREES SHALL HAVE A STRAIGHT CENTRAL LEADER AND DENSELY BRANCHED TO WITHIN 0.3m OF THE GROUND UNLESS OTHERWISE STATED.
- ALL PLANTING MATERIAL AND OPERATIONS TO MEET OR EXCEED THE HORTICULTURAL STANDARDS OF THE CANADIAN NURSERY LANDSCAPE ASSOCIATION AND THE HORTICULTURAL TRADES ASSOCIATION. ALL PLANT MATERIAL TO BE NO.1 GRADE NURSERY STOCK. UNSATISFACTORY STOCK WILL BE REFUSED ON THE SITE. PLANTS TO BE HEALTHY, TRUE TO SPECIFICATIONS & INSTALLED AS PER THESE STANDARDS.
- ALL MATERIALS & PLANTS TO BE APPROVED BY THE LANDSCAPE ARCHITECT PRIOR TO INSTALLATION & PREFERABLY BEFORE REMOVING FROM THE DELIVERY VEHICLE.
- SOD TO BE CANADA NO.1 NURSERY SOD, MEETING ONTARIO SOD GROWERS ASSOCIATION STANDARDS. ALL SOD AND SEED AREAS TO RECEIVE MINIMUM OF 150mm DEPTH OF TOPSOIL UNLESS OTHERWISE INDICATED. SOD IS TO BE CUT A MINIMUM OF THREE (3) TIMES BEFORE ACCEPTANCE.
- ALL TREE PROTECTION ITEMS USED IN NATURALIZED/RESTORED AREAS ARE TO BE BIODEGRADABLE AND REMOVED AFTER THE WARRANTY PERIOD (E.G. CHAIR WEED MATS, BURLAP TRUCK PROTECTION, WOODEN SUPPORT STAKES).

GENERAL NOTES

- LOCATIONS FOR PLANT MATERIAL AND PLANTING BEDS ARE TO BE MARKED OR STAKED OUT BY THE CONTRACTOR AND APPROVED BY THE LANDSCAPE ARCHITECT PRIOR TO INSTALLATION.
- ALL PLANT MATERIAL WHICH ARE SHOWN AND SPECIFIED BY QC (ON CENTER SPACING) ARE TO BE PLANTED AS PER THESE NOTES & IN ACCORDANCE WITH THE PLANT SCHEDULE.
- IN THE EVENT OF A DISCREPANCY BETWEEN THE PLANT LIST, KEY AND/OR GRAPHICS ON THE DRAWING, THE GREATER TOTAL SHALL TAKE PRECEDENT. THE CONTRACTOR IS RESPONSIBLE FOR ANY QUANTITY DISCREPANCIES REPORTED AFTER CONTRACT AWARD.
- ALL MASS PLANTINGS OF SHRUBS & PERENNIALS SHALL BE IN CONTINUOUS BEDS AND MULCHED AS SPECIFIED. ALL PLANT BEDS ARE TO BE AMENDED WITH A MINIMUM OF 300mm OF TOPSOIL MIX BEFORE PLANTING. IN AREAS WHERE EXCAVATION IS DIFFICULT/PROHIBITED (UNDERNEATH TREES) THEN PLANT BEDS ARE TO BE TOPRESSED WITH 100mm MINIMUM OF BIOCARB BY HERMANS AND MIXED INTO THE SOIL DURING PLANTING. PLANT BEDS ARE TO BE FINISHED WITH A 150mm LAYER OF SHREDED CEDAR MULCH AFTER PLANTING UNLESS OTHERWISE INDICATED.
- ALL TREE PITS AND ANY MECHANICALLY DUG HOLES SHALL BE SCARIFIED AND INCLUDE TREATMENT WITH MICORRHIZAL FUNGI OF THE SIDES BEFORE PLANTING.
- ALL TREES ARE TO BE STAKED OR GUY WIRED ACCORDING TO DETAILS PROVIDED OR AS OTHERWISE SPECIFIED.
- REMOVE BURLAP AND ROPE FROM THE TOP 2/3 OF ROOT BALLS. ANY WIRE MESH AND CONTAINERS MUST BE COMPLETELY REMOVED.
- WATER AT TIME OF PLANTING AND WHENEVER DEEMED NECESSARY TO MAINTAIN PLANTS IN A HEALTHY CONDITION.
- ALL PLANT MATERIALS WHICH CANNOT BE PLANTED IMMEDIATELY UPON ARRIVAL ON SITE SHALL BE PROPERLY NEEDED IN OR WELL PROTECTED WITH SOIL OR SIMILAR MATERIALS TO PREVENT DRYING OUT AND SHALL BE KEPT MOIST UNTIL COMMENCEMENT OF PLANTING. PLANT MATERIAL MUST BE PLANTED WITHIN 24 HOURS OF ARRIVING ON SITE.
- NO ACCESSIBLE OPEN HOLE TREE PITS SHALL BE PERMITTED OVERNIGHT. ALL OPEN PITS SHALL BE ADEQUATELY PROTECTED BY BARRIERS OR FILLED IN WITH SOIL PRIOR TO THE END OF EACH PLANTING DAY.
- ALL NEW WORK TO BLEND NEATLY AND SMOOTHLY WITH EXISTING CONDITIONS.

INSPECTION, MAINTENANCE & WARRANTY

- GIVE TIMELY NOTICE TO THE LANDSCAPE ARCHITECT FOR THE REQUIRED START UP SITE INSPECTION TO REVIEW SITE CONDITIONS AND SCHEDULE FOLLOW UP INSTALLATIONS.
- INSTALLATION OF PLANT MATERIAL PRIOR TO INSPECTION BY THE LANDSCAPE ARCHITECT WILL BE THE CONTRACTOR'S RESPONSIBILITY.
- THE LANDSCAPE ARCHITECT RESERVES THE RIGHT TO REJECT ANY PLANTS, WHETHER INSTALLED OR NOT, WHICH DO NOT CONFORM TO THE SPECIFICATIONS AND/OR SITE DRAWINGS. REMOVE ALL REJECTED PLANTS FROM THE SITE IMMEDIATELY. DO NOT REMOVE ANY LABELS FROM PLANTS UNTIL PLANTS HAVE BEEN INSPECTED AND APPROVED BY THE LANDSCAPE ARCHITECT.
- ALL PLANT MATERIAL AND WORKMANSHIP WILL BE INSPECTED AND IS UNDER WARRANTY FOR A MINIMUM OF TWO YEARS FROM DATE OF WRITTEN ACCEPTANCE. ALL PLANT MATERIAL MUST BE IN A HEALTHY, VIGOROUS GROWING CONDITION SATISFACTORY TO THE LANDSCAPE ARCHITECT AT THE END OF THE WARRANTY PERIOD OR BE REPLACED AT THE CONTRACTOR'S EXPENSE WITH A FURTHER TWO YEAR WARRANTY PROVIDED.
- WATERING BAGS (TREGATOR OR APPROVED ALTERNATIVE) WILL BE USED TO WATER NEWLY INSTALLED TREES FOR THE FIRST 2 YEARS. THESE WATER BAGS ARE NOT ALLOWED TO RUN DRY OVER THE GROWING SEASON. NON-POTABLE DRIP OR SPRAY IRRIGATION CONNECTED TO A TIMER AND RAIN SENSOR SHALL BE PROVIDED FOR ALL PLANT BEDS, SOD AND SEED. THIS SYSTEM IS TO BE DESIGNED AND APPROVED BY AN IRRIGATION SPECIALIST OR ENGINEER. REGULAR & SCHEDULED MANUAL WATERING IS PERMITTED AS AN ALTERNATIVE IF APPROVED.
- THE CONTRACTOR IS RESPONSIBLE FOR MONTHLY CLEANUP, MULCH TOP-UP, FERTILIZING AND WEEDING OF ALL SOFTSCAPED AREAS INCLUDING PLANT BEDS, SOD AND SEED DURING THE GROWING SEASON AND THROUGHOUT THE WARRANTY PERIOD UNLESS OTHERWISE INDICATED. FINAL ACCEPTANCE OF THE PROJECT WILL BE CARRIED OUT UPON COMPLETION OF ALL WORK INCLUDED IN THE CONTRACT.
- FINAL ACCEPTANCE OF THE PROJECT WILL BE CARRIED OUT UPON COMPLETION OF ALL WORK INCLUDED IN THE CONTRACT.

TOPSOIL REQUIREMENTS

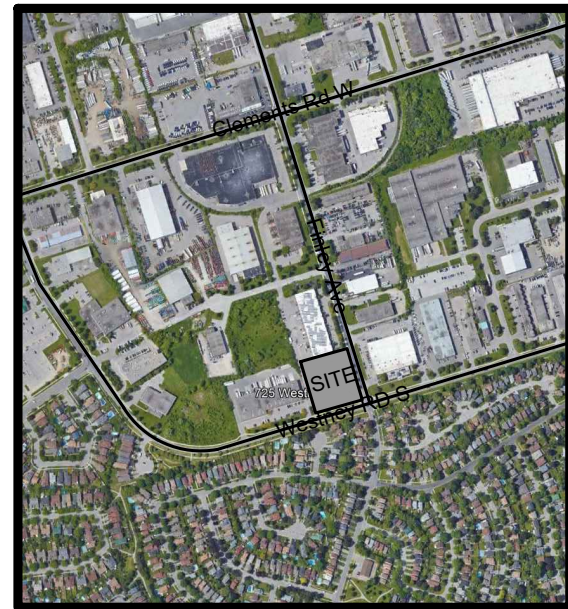
- PROVIDE MINIMUM SOIL VOLUME PER TREE AT 0.45m DEPTH FOR STREET TREES ABOVE UTILITIES, 0.9m FOR STREET TREES NOT ABOVE UTILITIES AND 1.2m IN OTHER AREAS UNLESS NOTED OTHERWISE:
 - 30 m³ FOR LARGE TREES (MATURE CANOPY OF 5m Ø OR MORE) OR AS PER MUNICIPAL STANDARDS
 - 20 m³ FOR SMALL TREES (MATURE CANOPY OF 5m Ø OR LESS) OR AS PER MUNICIPAL STANDARDS
- PREPARED SOIL MIXTURE FOR ALL PITS AND OTHER PLANTINGS SHALL CONSIST OF HIGH QUALITY SOIL FREE OF CLAY LUMPS, REFUSE, DEBRIS, TOXIC AND DELETERIOUS SUBSTANCES, STONES, WOODY MATERIAL, WEED SEEDS, GRASS OR WEED ROOTS, PLANT AND SOIL PESTS, INVASIVE SPECIES:
 - STANDARD MIX (FOR PLANTINGS IN TURF & SEED): TEXTURE TO BE 80-80% SAND, 20-40% SILT, AND 6-10% CLAY; ORGANIC MATTER 2-5% BY DRY WEIGHT; PH 6.0-7.8; PHOSPHORUS 10-60 ppm; POTASSIUM 80-250 ppm; CALCIUM < 5000 ppm; MAGNESIUM 100-300 ppm; SOLUBLE SALT < 1.5 mmhos/cm; INFILTRATION/PERMEABILITY/HYDRAULIC CONDUCTIVITY 50-75 mm/hr (AT 85% PROCTOR DENSITY)
 - PLANT BED MIX (FOR PLANTINGS IN PLANT BEDS): VOLUMETRIC MIX OF 50% TOPSOIL, 20% COARSE SAND AND 30% PINE BARK COMPOST; ORGANIC MATTER 5% BY DRY WEIGHT; PH 6.0-7.8; PHOSPHORUS 10-60 ppm; POTASSIUM 80-250 ppm; CALCIUM < 5000 ppm; MAGNESIUM 100-300 ppm; SOLUBLE SALT < 1.5 mmhos/cm; INFILTRATION/PERMEABILITY/HYDRAULIC CONDUCTIVITY 50-75 mm/hr (5% PROCTOR DENSITY)
 - BOULEVARD MIX (FOR PLANTINGS IN HARDSCAPED BOULEVARDS & OVER UNDERGROUND STRUCTURES): VOLUMETRIC MIX OF 40-65% TOPSOIL, 40-65% COARSE SAND AND 12-15% PINE BARK COMPOST. PARTICLE SIZE DISTRIBUTION OF >45% MEDIUM-COARSE SAND (0.23-2MM) PLUS GRAVEL (2-5MM), 18-35% TOTAL COMBINED SILT AND CLAY; ORGANIC MATTER 3-5% BY DRY WEIGHT; PH 6.0-7.8; PHOSPHORUS 10-60 ppm; POTASSIUM 80-250 ppm; CALCIUM < 5000 ppm; MAGNESIUM 100-300 ppm; SOLUBLE SALT < 1.5 mmhos/cm; INFILTRATION/PERMEABILITY/HYDRAULIC CONDUCTIVITY 50-75 mm/hr (5% PROCTOR DENSITY)
 - ACIDIC SOIL MIX (REFER TO ASTERISK (*) IN PLANT LIST WHERE REQUIRED): VOLUMETRIC MIX OF 40% TOPSOIL, 20% COARSE SAND AND 40% PINE BARK COMPOST OR PARTLY DECOMPOSED OAK LEAVES; ORGANIC MATTER 5% BY DRY WEIGHT; PH < 5.5 (IF REQUIRED REDUCE THE pH WITH 2KG/10M² AGRICULTURE SULPHUR OR +4kg/10m² IRON SULPHATE); PHOSPHORUS 10-60 ppm; POTASSIUM 80-250 ppm; CALCIUM < 5000 ppm; MAGNESIUM 100-300 ppm; SOLUBLE SALT < 1.5 mmhos/cm; INFILTRATION/PERMEABILITY/HYDRAULIC CONDUCTIVITY 50-75 mm/hr (AT 85% PROCTOR DENSITY)

SOIL VOLUME CHART

	Location (City ROW, private property)	Soil Area (m²)	Soil Depth(m*)	Soil Volume (m³)	Tree Quantity	Soil Volume per tree (m³)	Irrigation provided (Yes/No)	Hard Surface or Soft Surface	Soil Cells (Yes/No)
1	Private	908.2	0.75	681.11	18	37.84	No	Soft	No
2	Private	865.7	0.85	735.8365	20	36.79	No	Soft	No
3	Private	25.8	1.5	38.73	1	38.73	No	Soft	No
4	Private	161	1.5	241.5	8	30.19	No	Soft	No
Totals		1095.0		1697.18	47				

* Soil depth excludes drainage layer

LOCATION MAP



GENERAL NOTES

THE LOCATION OF PROPERTY LINES, ELEVATIONS AND FACILITIES ON THIS PLAN WERE DRAWN ON THE BASIS OF A DIGITAL SITE PLAN OR SURVEY DATA PROVIDED BY OTHER CONSULTANTS.

IT IS THE RESPONSIBILITY OF THE CLIENT AND HIS CONTRACTORS TO CONFIRM THE ACCURACY OF THE SETBACKS, LOCATIONS AND GRADES ETC. ANY VARIATIONS BETWEEN EXISTING CONDITIONS AND THIS PLAN SHOULD BE ADJUSTED ON SITE AND REPORTED TO THE CONSULTING LANDSCAPE ARCHITECT TO DETERMINE THE IMPACT OF THE VARIATIONS ON THE SUITABILITY OF THE PROPOSED DEVELOPMENT.

CONSTRUCTION MUST CONFORM TO ALL CODES AND REQUIREMENTS OF AUTHORITIES HAVING JURISDICTION.

REVISIONS

NO.	DATE	NOTES	BY
4	2025-04-30	ISSUED SPA	CT
3	2025-04-08	REVISED LANDSCAPE PLAN	RW
2	2024-04-11	REVISED LANDSCAPE PLAN	YW
1	2023-11-15	LANDSCAPE PLAN	YW

THESE LANDSCAPE DRAWINGS SHALL ONLY BE USED FOR THE PURPOSES INDICATED BELOW AS NOTED AND WHEN SIGNED BY THE CONSULTING LANDSCAPE ARCHITECT.

<input type="checkbox"/> CONCEPTUAL	<input type="checkbox"/> TENDER
<input checked="" type="checkbox"/> PRELIMINARY	<input type="checkbox"/> CONTRACT
<input type="checkbox"/> SITE PLAN	<input type="checkbox"/> CONSTRUCTION
<input type="checkbox"/> PERMIT	<input type="checkbox"/> AS-BUILT



THESE DRAWINGS ARE INSTRUMENTS OF SERVICE AND THE LANDSCAPE ARCHITECT RETAINS OWNERSHIP OF THESE DRAWINGS. THEY ARE FOR SITE PLAN APPROVAL ONLY AND MAY REQUIRE FURTHER CONSTRUCTION DETAILING AND COORDINATION WITH OTHER ASSOCIATED PROFESSIONAL DESIGN SERVICES BEFORE ACTUAL TENDER AND CONSTRUCTION COMMENCES. DIMENSIONS ARE TO BE VERIFIED PRIOR TO CONSTRUCTION. DRAWINGS ARE NOT TO BE SCALED. IT IS ADVISED THAT CONTRACTORS CONTACT THE LANDSCAPE ARCHITECT PRIOR TO CONSTRUCTION TO ENSURE THE USE OF THE LATEST REVISED DRAWINGS. THE LANDSCAPE ARCHITECT IS NOT LIABLE FOR ERRORS OR OMISSIONS ARISING FROM UTILIZATION OF THESE PLANS BEFORE THE SAID DRAWINGS ARE SEALED, SIGNED AND DATED. THE LANDSCAPE ARCHITECT IS CONTRACTED TO PROVIDE CONSTRUCTION ADMINISTRATION AND CERTIFICATION SERVICES BY THE OWNER. ALL APPARENT DISCREPANCIES ARE TO BE REPORTED IN WRITING TO THE LANDSCAPE ARCHITECT BEFORE CONSTRUCTION COMMENCES.

PROJECT: SPA FILE #
725 Westney Road South
Ajax, Ontario

DRAWING: PLANTING PLAN & SOIL VOLUME

DRAWN BY: YW	SCALE: 1:250	L-P1 DRAWING 2 of 4
CHECKED BY: TM	DATE: 2023-11-15	
JOB NO.: 2023-104.		

File #2023-104.

