



WANG ARCHITECTS INC.

3950 14th Ave, unit 609, Markham, ON L3R 0A9
T: 905-604-6960 E: info@wangarchitects.ca
www.wangarchitects.ca

PROJECT NAME: Firearms Outlet Canada (FOC) Shooting Range Addition

PROJECT ADDRESS: 725 Westney Rd S Ajax Ontario

DATE: July 8, 2025

ADDENDUM NO. 2

This Addendum, consisting of **1 page** and shall be supplemented to and form part of the Project documents; it modifies the Issued for Tender set as follows:

1. Attached is the latest conduit plan from security contractor
2. All overhead doors are roll-up type

END ADDENDUM NO. 2



FIREARMS OUTLET CANADA
725 WESTNEY RD. S., AJAX, ON
Updated: July 7th, 2025
MQ

ICT GX System



GX Server Qty.1



ICT enclosure(EN-DIN-24) Qty.3



GX Controller(PRT-CTRL-DIN) Qty.1



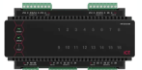
Expander(PRT-RDM2-DIN-485) Qty.7



ICT power supply(PRT-PSU-DIN-8AMP) Qty.2



ICT readers (TSL-EXTRA-RK-HL) Qty.14



ICT readers (PRT-ZX16) Qty.2



ICT Keypad (PRT-KLCS) Qty.1



GSM LE4010 With Battery Qty.1



7 amp battery Qty.8



RS485 Quick Connect Qty.12



Power Supply (SW1210-16CB) Qty.2



Emergency Door Contact (E-SRFMTMG2W) Qty.13



Door Strike (HES5300) Qty.12



OHD Contact (ODC59A) Qty.1



Recessed Door Contact Qty.14



REX Qty.14



CX12 Qty.2



Panic PA Qty.1



Glass Break AC100 Qty.2

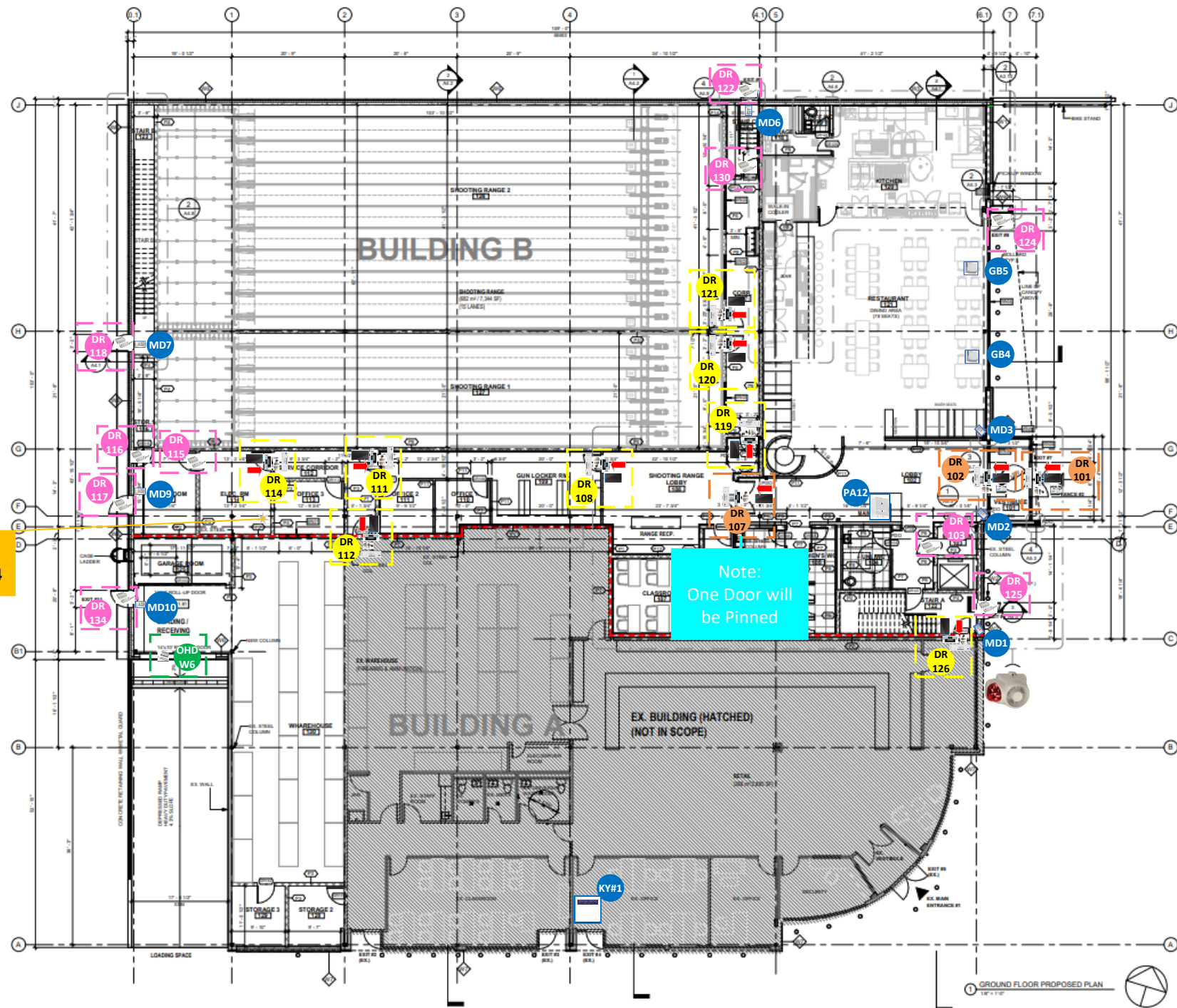


Motion Detector(LC-224) Qty.8

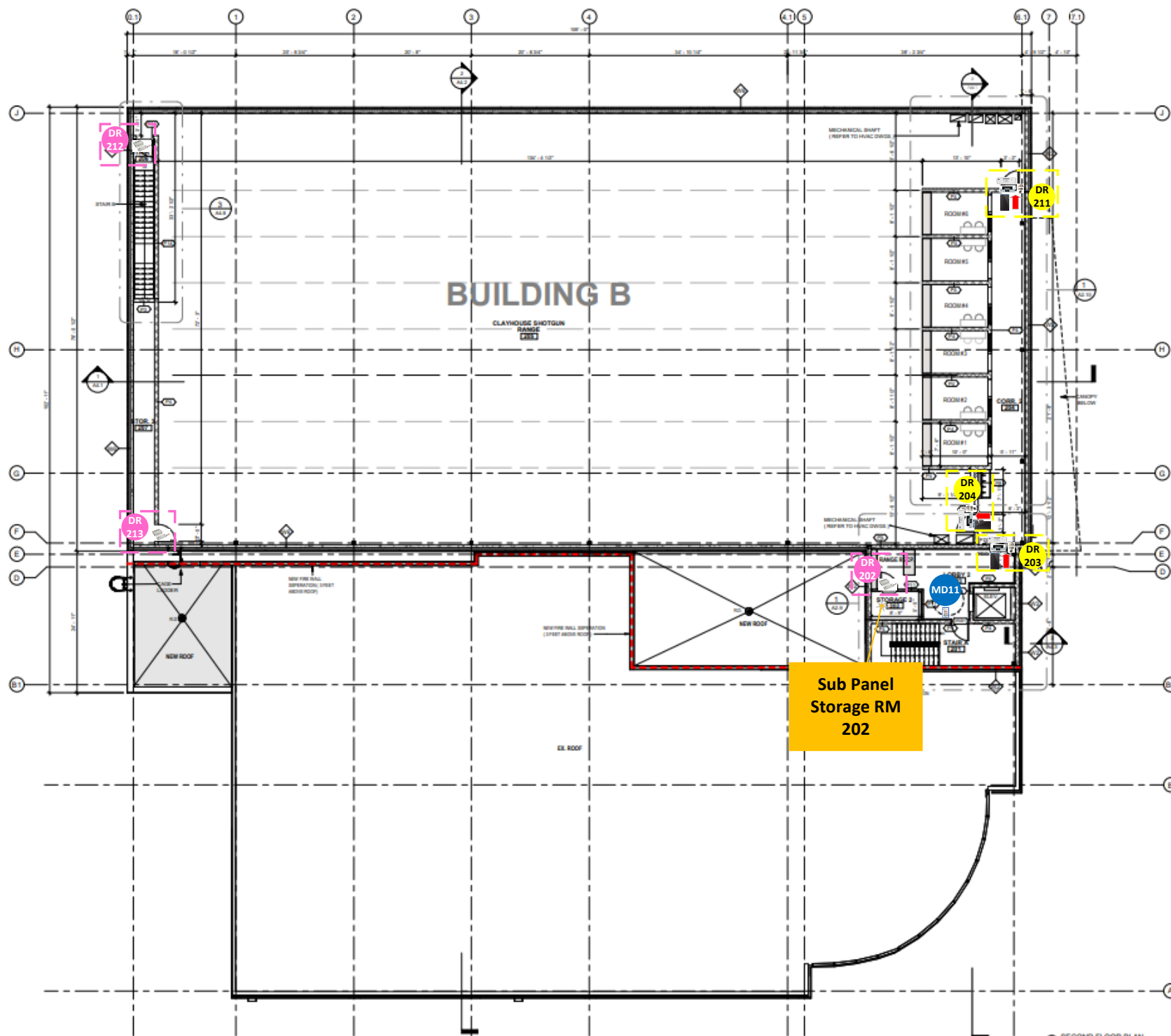


Storeroom Lever Lock (Trudoor CL2-86)Qty.12

Important Note -Drawings in Progress



**Main Panel
Electrical Room 114**



Conduit Specification for Access Control and Intrusion Systems:

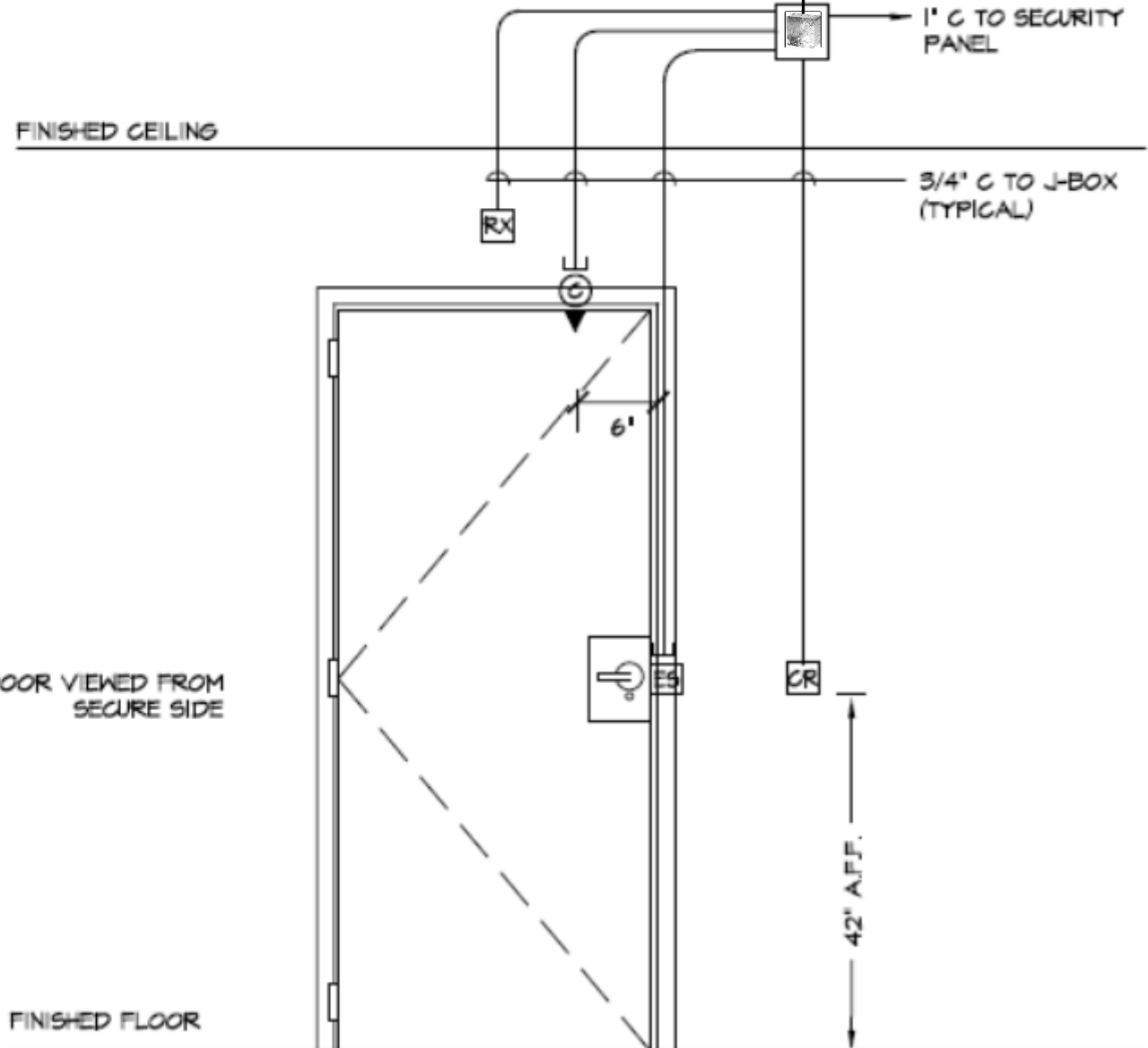


1. **Conduit Type:**
 - Use **Electrical Metallic Tubing (EMT)** or **Rigid Metal Conduit (RMC)** for indoor installations.
2. **Conduit Size:**
 - Minimum conduit size: **¾ inch** for single runs.
3. **Conduit Routing:**
 - Conceal conduit within walls, ceilings, or floors where possible.
 - Avoid sharp bends; use long-radius elbows.
 - Maintain separation from high-voltage power lines (minimum 12 inches).
4. **Conduit Termination:**
 - Terminate with **bushings** or **grommets** to protect cable sheathing.
 - Use **pull boxes** or **junction boxes** at regular intervals and at changes in direction(i.e. every 30FT).
5. **Pull Strings:**
 - Install **pull strings** in all conduits .
6. **Conduit Labeling:**
 - Label all conduits at both ends with destination and purpose (e.g., “Access Control – Door 1”).
7. **Sealing and Firestopping:**
 - Seal all conduit penetrations through fire-rated walls and floors with **UL-listed firestop systems**.
8. **Grounding:**
 - Ensure all metallic conduits are properly **bonded and grounded**.
9. **Environmental Considerations:**
 - Use **corrosion-resistant** conduit in damp or corrosive environments.
10. **Code Compliance:**
 - All conduit installations must comply with **Canadian Electrical Code** and local building codes.
11. **Coordination:**
 - Coordinate conduit paths with other trades to avoid conflicts.
12. **Automatic Door Operator (ADO)-This is not Part of New Age Scope:**
 - For automatic door operators, a ¾” conduit must be installed to supply power.
 - For automatic door operators, a ¾” conduit must be installed to Integrate with Access control.
 - Power should be sourced from a dedicated circuit breaker identified in the Citect system.
 - Ensure the conduit is properly secured and complies with the Ontario Electrical Safety Code (OESC) requirements for commercial installations.

Type A – Single Door



4 x 2-1/8 D. 30 cu. inch Square Steel Box
To be installed every 50FT



7985mm ►

DOOR SECURITY SYMBOL LIST

CR	PROX CARD READER
Ⓞ	MAGNETIC DOOR CONTACT
RX	REQUEST TO EXIT
ES	ELECTRIC STRIKE
FB	DOOR MANUAL RELEASE PUSH BUTTON
EL	ELECTRIC LOCK
ER	ELECTRIC LATCH RETRACTION

5867mm ▲

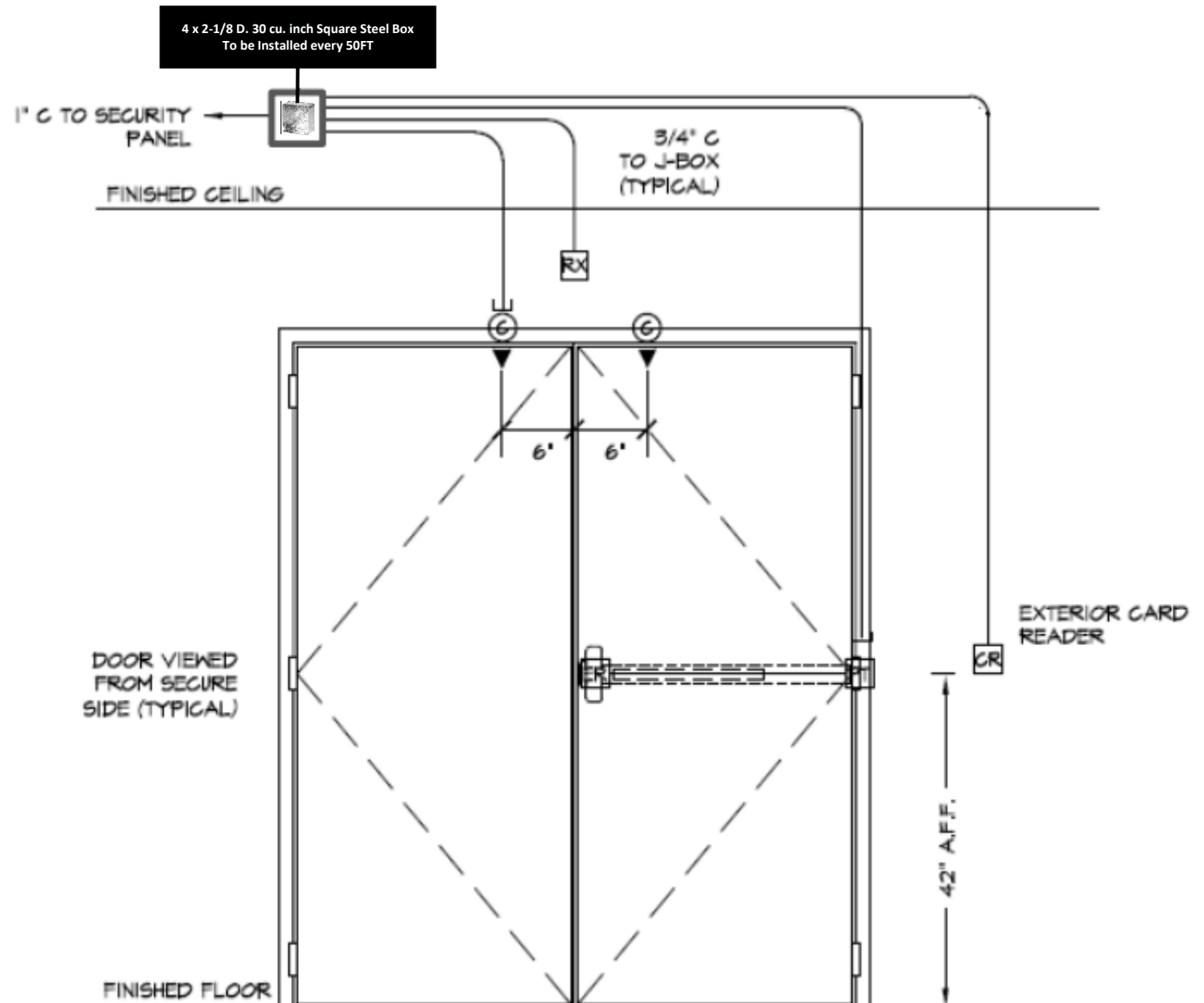
Type B – Double Doors

7885mm ▶

DOOR SECURITY SYMBOL LIST

CR	PROX CARD READER
Ⓞ	MAGNETIC DOOR CONTACT
RX	REQUEST TO EXIT
ES	ELECTRIC STRIKE
PB	DOOR MANUAL RELEASE PUSH BUTTON
EL	ELECTRIC LOCK
ER	ELECTRIC LATCH RETRACTION

5867mm ▲



Type C - Single Door



4 x 2-1/8 D. 30 cu. inch Square Steel Box
To be Installed every 50FT

3/4" C TO SECURITY
PANEL

FINISHED CEILING

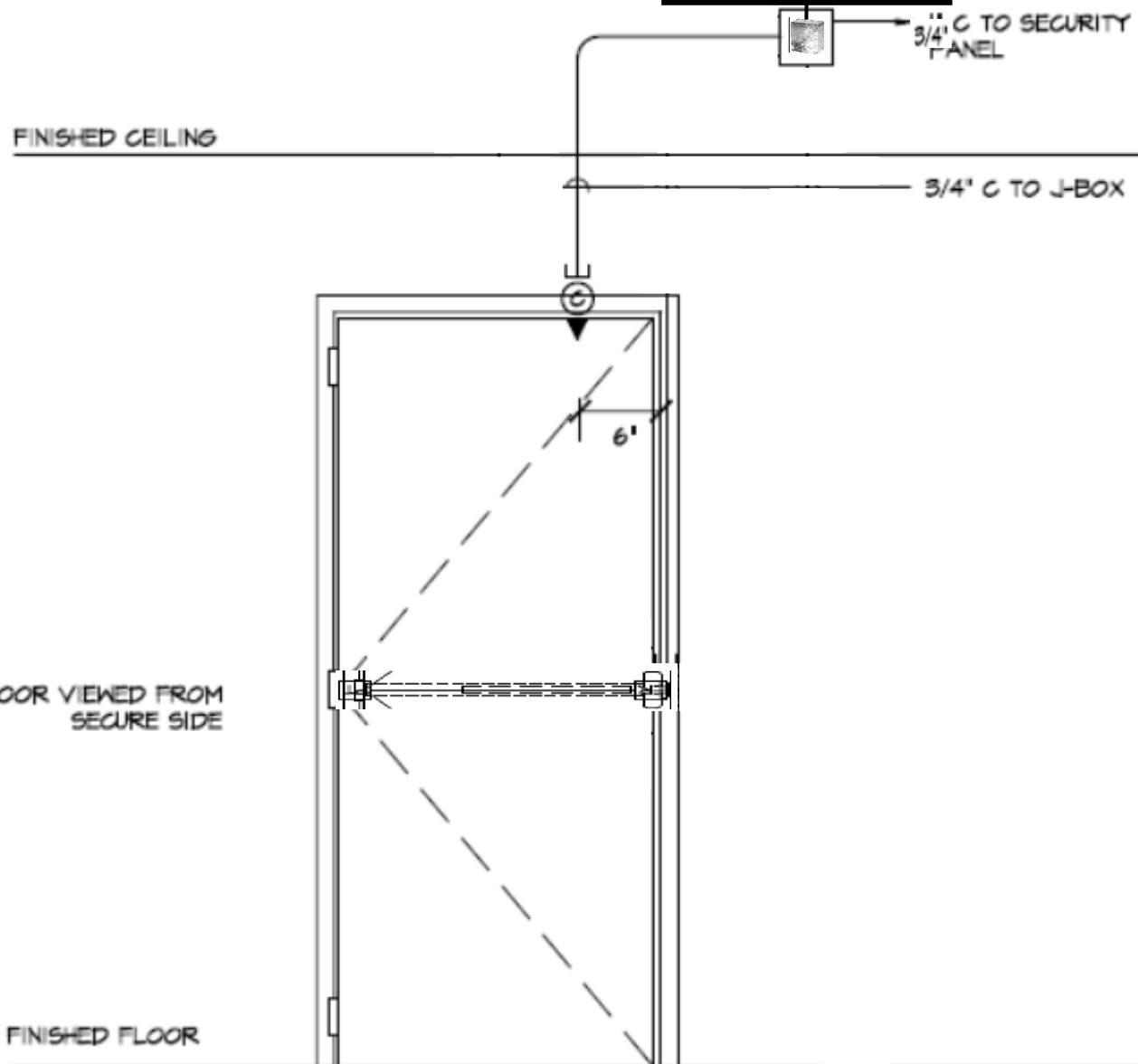
3/4" C TO J-BOX

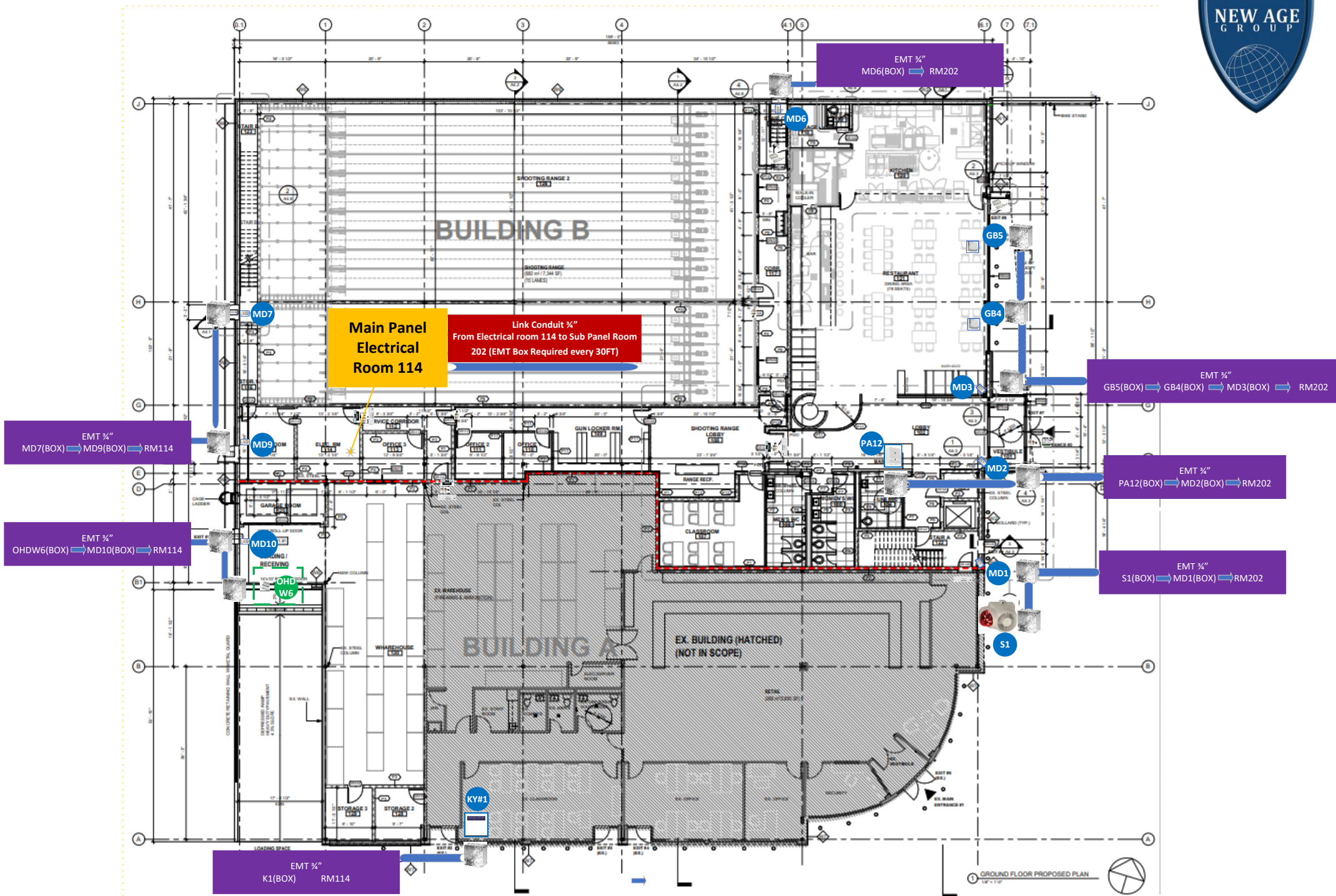
DOOR SECURITY SYMBOL LIST

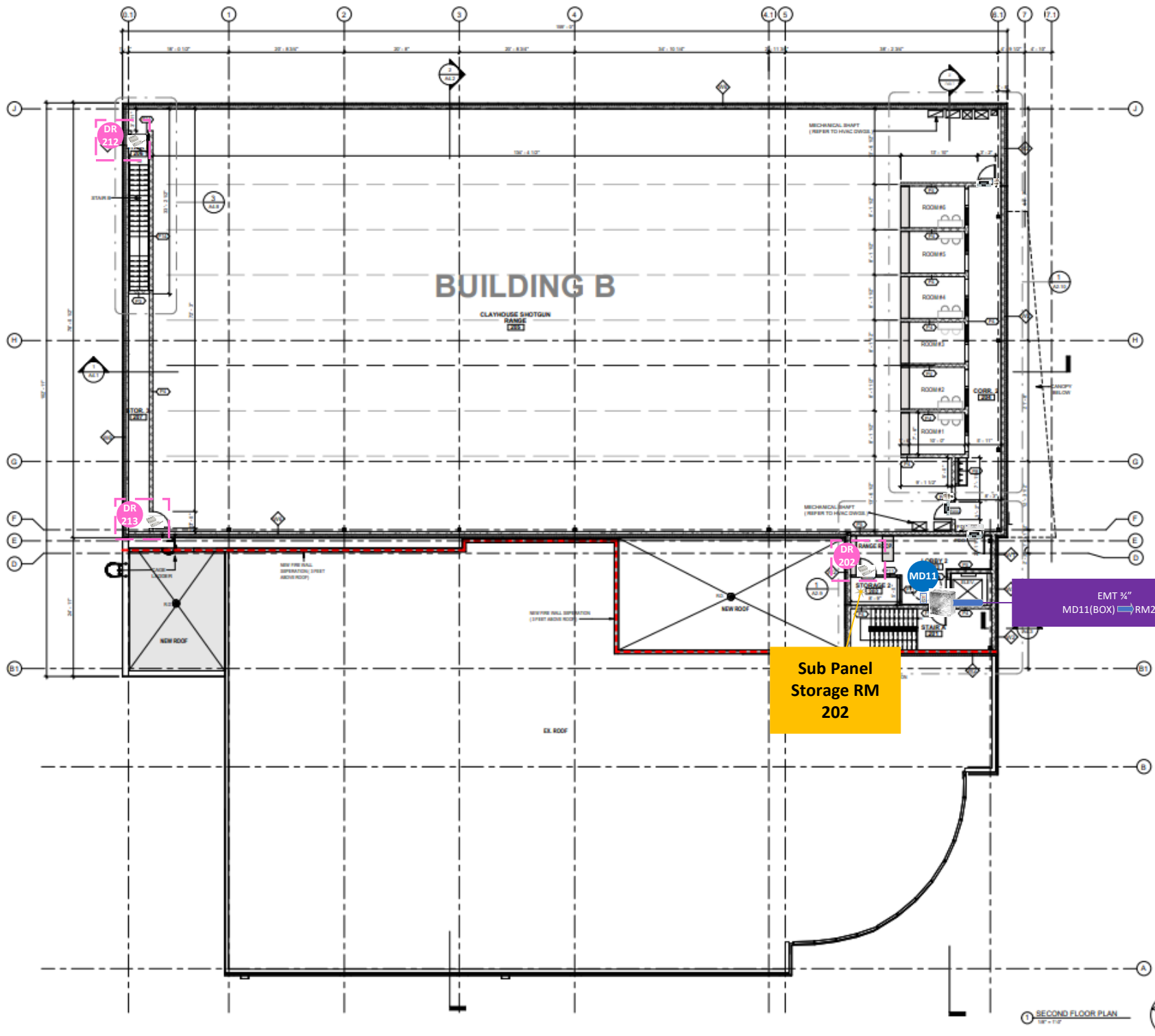
CR	PROX CARD READER
⊙	MAGNETIC DOOR CONTACT
RX	REQUEST TO EXIT
ES	ELECTRIC STRIKE
PB	DOOR MANUAL RELEASE PUSH BUTTON
EL	ELECTRIC LOCK
ER	ELECTRIC LATCH RETRACTION

DOOR VIEWED FROM
SECURE SIDE

FINISHED FLOOR





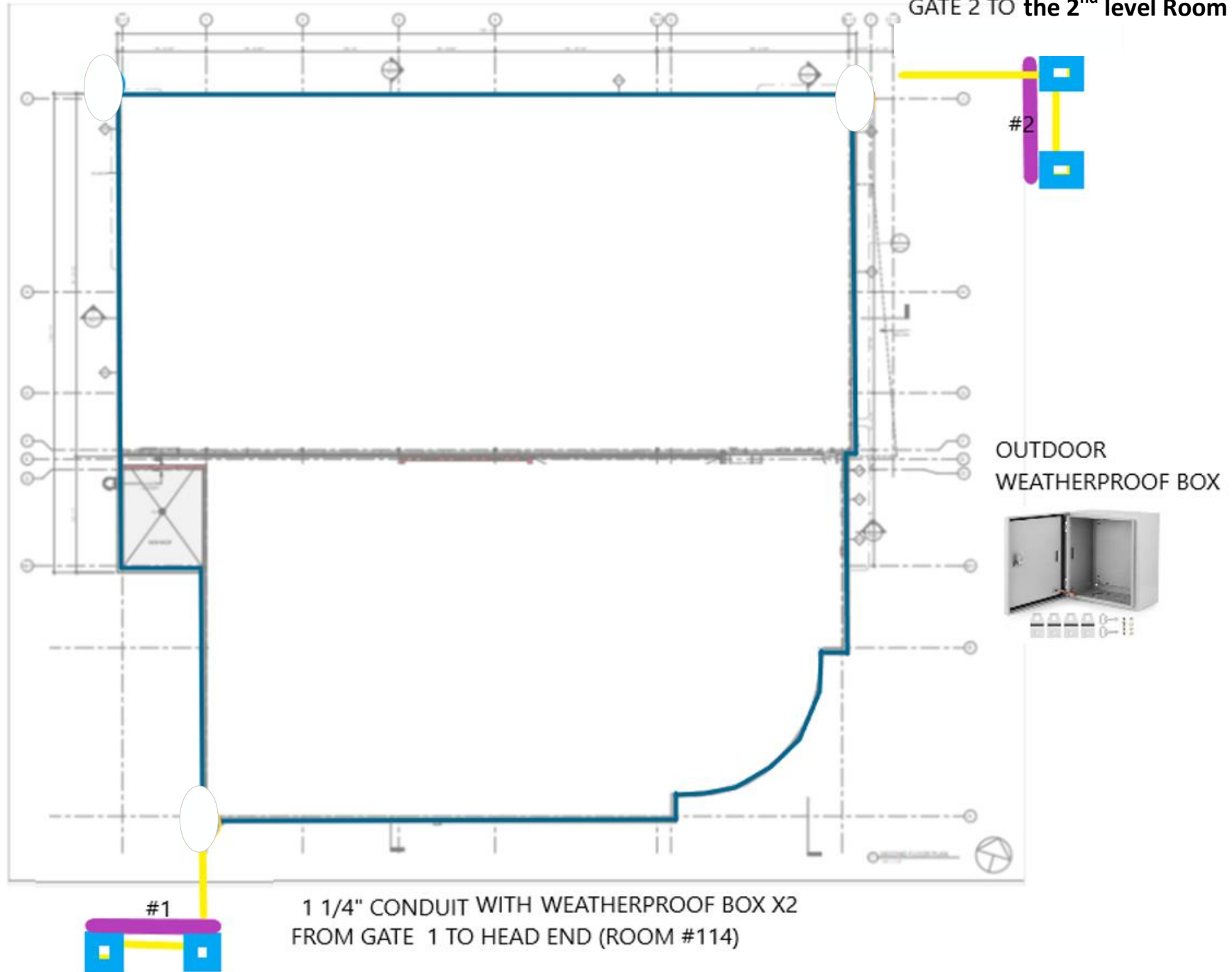


EMT ¼"

MD11(BOX) → RM202

1 SECOND FLOOR PLAN
1/8" = 1'-0"

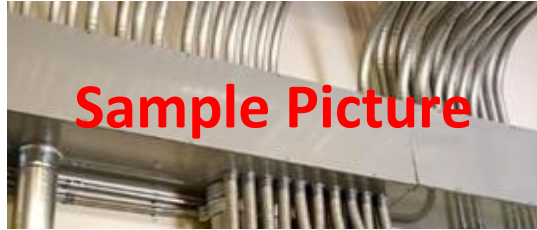
GATE Conduit For Access Control



Ground Floor Outdoor Gate Conduit drawing

Straight sections 24" **1100 SS6024**

Closing plate **1100 CP6065**



Sample Picture

Installed by Electrician inside the enclosure (All Power receptacle will be GFCI)
GFCI Receptacle

A green light – If the green light is on this means the outlet is working as intended, and it is providing the necessary protection.

A red light – A red light means that there is a problem with the device. Further investigation needs to be carried out.

No lights – If neither red nor green light is flashing, this means that no power is reaching the outlet or that the outlet may be tripped.

Installed by Electrician inside the enclosure (All Power receptacle will be GFCI)
GFCI Receptacle

A green light – If the green light is on this means the outlet is working as intended, and it is providing the necessary protection.

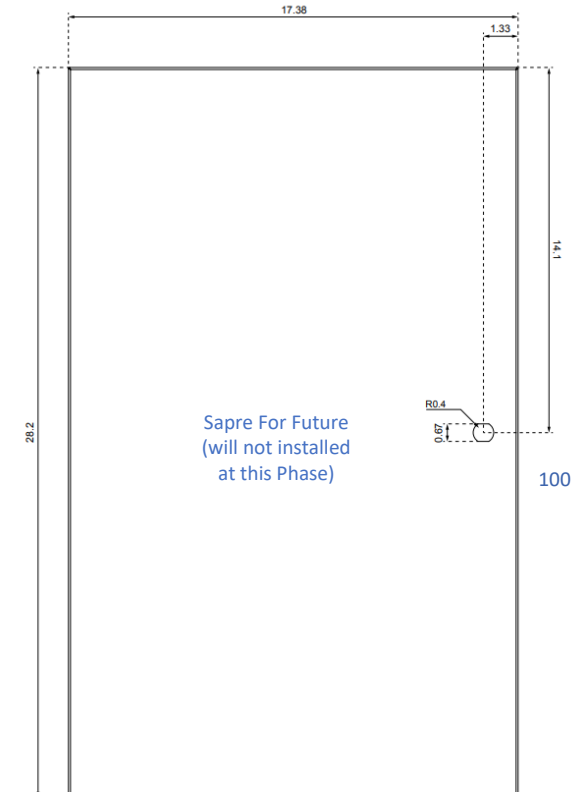
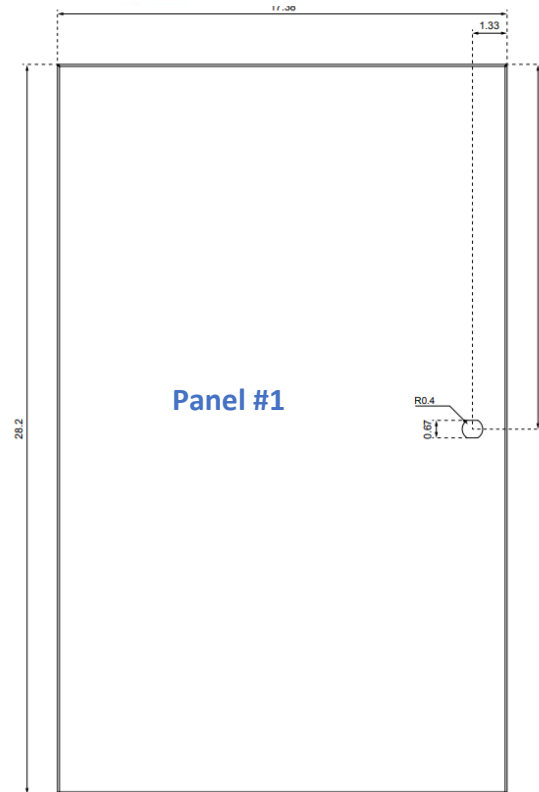
A red light – A red light means that there is a problem with the device. Further investigation needs to be carried out.

No lights – If neither red nor green light is flashing, this means that no power is reaching the outlet or that the outlet may be tripped.



Wall(Plywood)-Main Headed -Room 114

70 inches



Sapre For Future
(will not installed
at this Phase)

Sapre For Future (will not
installed at this Phase)



100 inches

Straight sections 24" **1100 SS6024**

Closing plate **1100 CP6065**

Sample Picture

Installed by Electrician inside the enclosure (All Power receptacle will be GFCI)
GFCI Receptacle

A green light – If the green light is on this means the outlet is working as intended, and it is providing the necessary protection.

A red light – A red light means that there is a problem with the device. Further investigation needs to be carried out.

No lights – If neither red nor green light is flashing, this means that no power is reaching the outlet or that the outlet may be tripped.

Installed by Electrician inside the enclosure (All Power receptacle will be GFCI)
GFCI Receptacle

A green light – If the green light is on this means the outlet is working as intended, and it is providing the necessary protection.

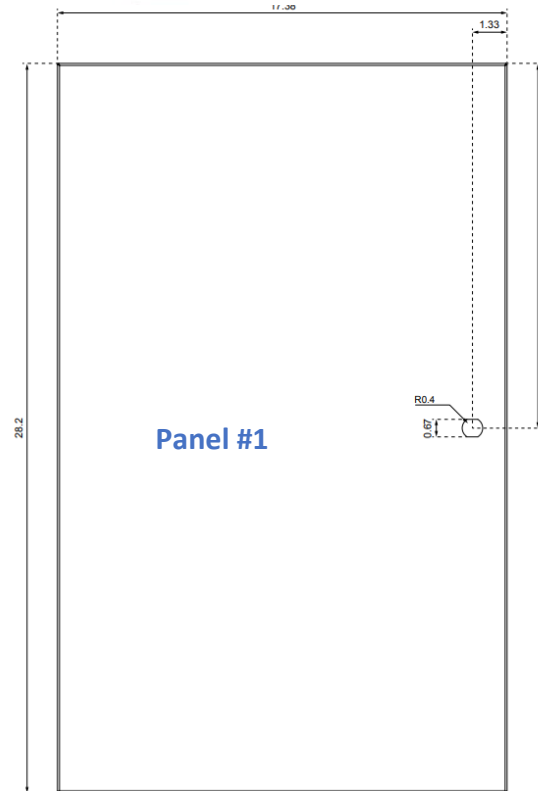
A red light – A red light means that there is a problem with the device. Further investigation needs to be carried out.

No lights – If neither red nor green light is flashing, this means that no power is reaching the outlet or that the outlet may be tripped.

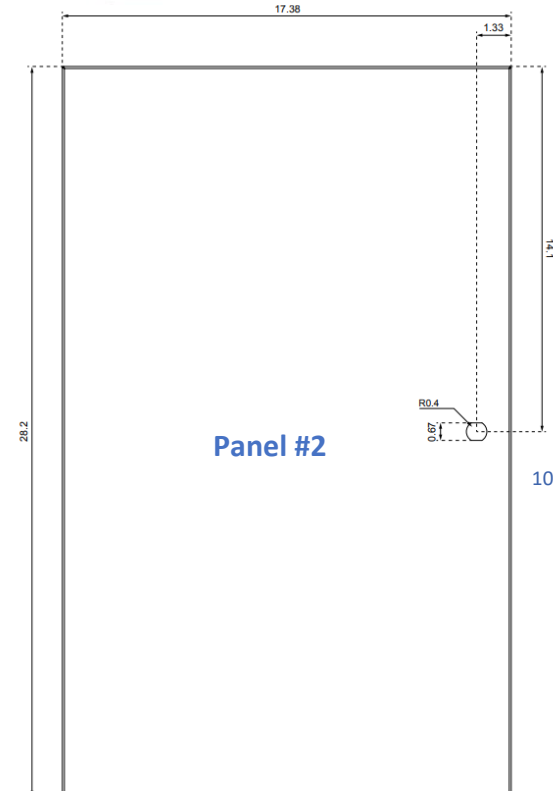


Wall(Plywood)-Sub Panel -Room 202

70 inches



Panel #1



Panel #2

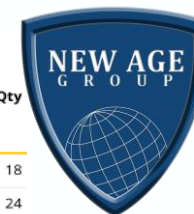
100 inches



Sapre For Future (will not installed at this Phase)



AXIS Surveillance



Axis products

	Part number	Qty
Cameras		
AXIS M2036-LE	02125-001	18
AXIS M4218-LV	02679-001	24
AXIS M4318-PLVE	02511-001	1
AXIS M4327-P	02636-004	6
AXIS P1467-LE	02341-001	2
AXIS P3737-PLE	02634-001	2
AXIS Q1808-LE	02507-001	3
AXIS Q1808-LE 150 mm	02508-001	2
Speakers		
AXIS C1310-E Mk II	02813-001	2
Recording		
AXIS T8508 PoE+ Network Switch	01191-004	1
AXIS T8516 PoE+ Network Switch	5801-694	3
AXIS T8524 PoE+ Network Switch	01192-004	1
Intercoms		
AXIS I8307-VE	02784-001	1
Accessories		
AXIS Surveillance Card 128 GB 10 pcs	01678-001	2 × 10 pcs
AXIS Surveillance Card 128 GB	01491-001	6
AXIS T91A64 Corner Bracket	5017-641	2
AXIS T91D61 Wall Mount 1.5" NPS	5504-821	2
AXIS T91E61 Wall Mount	5506-481	1
AXIS T94B01P Conduit Back Box	5507-401	24
AXIS T94K01D Pendant Kit	5505-081	1

	Part number	Qty
AXIS T94N01D Pendant Kit	01513-001	2
AXIS T94R01B Corner Bracket	5507-601	1
AXIS T94S01P Conduit Back Box	01190-001	2
AXIS T18604 Conduit Adapter 3/4 NPS	02929-001	1
AXIS TP1601 Adapter Plate	02083-001	26
AXIS TP3603 Conduit Back Box	02025-001	29
AXIS TQ3601-E Conduit Back Box	02913-001	2

Other products

	Part number	Qty
Miscellaneous		
AXIS T85 Rack Mount Kit A	01232-001	1

AXIS Surveillance



24 × AXIS M4218-LV

Featuring WDR and OptimizedIR, this compact and discreet dome delivers great image quality—day and night, even in low light. A deep learning processing unit (DLPU) lets you take advantage of intelligent analytics based on deep learning on the edge. Designed to blend into any environment, it can be repaired and offers a range of accessories for discreet monitoring. Plus, it features an HDMI port and the flexibility to add audio and I/O connectivity using AXIS T61 Series. Furthermore, Axis Edge Vault provides a hardware-based cybersecurity platform that safeguards the device.

[HDTV 4K](#) | [200mm](#) | [Built-in IR](#) | [Audio support](#) | [Vendor resources](#)



AXIS M4318-PLVE

With a 12 MP sensor, this discreet mini dome offers excellent image quality and a complete 180° or 360° overview. Featuring a stereographic lens and Sharpdome 360, it delivers greater sharpness at the edges of the image. Built-in IR illumination with individually controllable LEDs ensures clear, reflection-free footage and excellent image quality even in low light or complete darkness. A deep learning processing unit enables unique opportunities for analytics based on deep learning. Plus, AXIS Object Analytics can detect and classify humans, vehicles, and types of vehicles. Furthermore, Axis Edge Vault protects your Axis device ID and simplifies authorization of Axis devices on your network.

[HDTV 1080p / 5 megapixel](#) | [200mm](#) | [Lightfinder](#) | [Forensic WDR](#) | [Built-in IR](#) | [Outdoor ready](#)



6 × AXIS M4327-P

AXIS M4327-P can deliver 360° or 180° panoramic views at up to 30 fps with no blind spots. The camera can stream up to four individual view areas simultaneously with support for digital PTZ. Built on ARTECC-B, it offers powerful artificial intelligence and deep learning analytics on the edge. Plus, thanks to Axis Object Analytics, it can accurately detect and classify moving objects for more effective monitoring. The camera is delivered factory-focused and features digital rol functionality for easy installation. Furthermore, it's compact, discreet, and repaintable to blend in with any surroundings.

[HDTV 1080p / 4.1 megapixel](#) | [200mm](#) | [Lightfinder](#) | [Forensic WDR](#) | [Audio support](#)



2 × AXIS P3737-PL

This multidirectional camera offers four channels with 5 MP per channel to deliver excellent overviews and detailed coverage. It includes 360° IR illumination for clear, reflection-free footage and excellent image quality even in low light or complete darkness. This flexible camera offers various mounting options. For instance, it can be recessed mounted for discreet surveillance or mounted in ceilings for complete 360° coverage. With highly efficient power consumption, it ensures lower operating costs. It also supports powerful analytics based on deep learning. Furthermore, Axis Edge Vault, a hardware-based cybersecurity platform, guarantees the device's integrity and protects it from unauthorized access.

[HDTV 4K / 4 megapixel](#) | [200mm](#) | [Lightfinder](#) | [Forensic WDR](#) | [Built-in IR](#) | [Outdoor ready](#)



15 × AXIS M2036-LE

Ideal for tough environments and rough weather, AXIS M2036-LE delivers Quad HD 1440p/4 MP. With a deep learning processing unit, it enables unique opportunities for analytics based on deep learning on the edge. AXIS Object Analytics offers detection and classification of humans, vehicles, and types of vehicles. And, Axis Edge Vault protects your Axis device ID and simplifies authorization of Axis devices on your network. This HDR-rated camera offers flexible and cost-efficient installation including support for PoE. Edge-to-edge technology allows for smart pairing with Axis Speakers. Plus, a spacious, sealed back box ensures secure cable management.

[HDTV 1080p / 4 megapixel](#) | [200mm](#) | [Lightfinder](#) | [Built-in IR](#) | [Outdoor ready](#) | [Audio support](#)



2 × AXIS P1467-LE

Based on ARTECC-B, AXIS P1467-LE delivers excellent image quality in 5 MP. It includes a deep learning processing unit enabling advanced features and powerful analytics based on deep learning on the edge. With AXIS Object Analytics preinstalled, it offers detection and classification of humans, vehicles, and types of vehicles. This IP66/IP67, NEMA 4X, and IK10-rated camera can withstand winds up to 50 m/s. Lightfinder 2.0, Forensic WDR, and OptimizedIR ensure sharp, detailed images under any light conditions. Furthermore, it includes Axis Edge Vault to protect your Axis device ID and simplify authorization of Axis products on your network.

[3 megapixel](#) | [200mm](#) | [Lightfinder](#) | [Forensic WDR](#) | [Built-in IR](#) | [Outdoor ready](#)



3 × AXIS Q1808-LE

With 4K and an ultra-high light sensitive 4/3" sensor, this powerful camera delivers exceptional low-light performance and less noise even at great distances. It's available with a choice of lenses: a wide lens for great coverage in open areas and a tele lens for surveillance from a distance. A deep learning processing unit enables more processing power to run advanced features and powerful analytics on the edge. And, with PoE-out you can connect and power other devices without any additional cabling. Furthermore, this robust, outdoor-ready camera features Axis Edge Vault to safeguard the device and protect sensitive information from unauthorized access.

[HDTV 4K / 10.3 megapixel](#) | [200mm](#) | [Lightfinder](#) | [Electronic image stabilization](#) | [Forensic WDR](#) | [Built-in IR](#)



2 × AXIS Q1808-LE 150 mm

With 4K and an ultra-high light sensitive 4/3" sensor, this powerful camera delivers exceptional low-light performance and less noise even at great distances. It's available with a choice of lenses: a wide lens for great coverage in open areas and a tele lens for surveillance from a distance. A deep learning processing unit enables more processing power to run advanced features and powerful analytics on the edge. And, with PoE-out you can connect and power other devices without any additional cabling. Furthermore, this robust, outdoor-ready camera features Axis Edge Vault to safeguard the device and protect sensitive information from unauthorized access.

[HDTV 4K / 10.3 megapixel](#) | [200mm](#) | [Lightfinder](#) | [Electronic image stabilization](#) | [Forensic WDR](#) | [Built-in IR](#)



AXIS IB307-VE

AXIS IB307-VE offers high-quality two-way video for enhanced communication. A fully featured 4K camera delivers outstanding details and the screen's background and buttons can be customized. Robust and vandal-resistant, it offers flexible installation and can be mounted on walls, poles, recessed, or using a conduit mount. It integrates seamlessly with your VMS and supports SIP as well as open programming interfaces including VAPIX and ONVIF. Additionally, the integrated access control reader (RFID) makes it easy to integrate with other access control systems. Furthermore, Axis Edge Vault, a hardware-based cybersecurity platform, safeguards the device and offers FIPS 140-3 Level 3 certified secure key storage.

[HDTV 4K](#) | [200mm](#) | [Lightfinder](#) | [Forensic WDR](#) | [Outdoor ready](#) | [Two-way audio](#)



AXIS T8508 PoE+ Network Switch

AXIS T8508 PoE+ Network Switch is an 8-port managed Gigabit switch with a compact, fan-less design for installation in noise sensitive environments or to be used as an edge switch. AXIS T8508 is a perfect complement to Axis' recorders to further simplify setup and installation of surveillance systems. The intuitive administrator interface offers a graphic topology for easy overview of all devices in the system with information about connected devices and status. The high PoE power output allows for connection of up to 8 PoE cameras.



3 × AXIS T8516 PoE+ Network Switch

AXIS T8516 PoE+ Network Switch is an easy to install 16-port managed Gigabit switch - a perfect complement to Axis' recorders to further simplify setup and installation of surveillance systems. AXIS T8516 comes with an integrated DHCP server for automatic assignment of IP addresses and discovery of connected Axis devices. The intuitive administrator interface offers a graphic topology for easy overview of all devices in the system with information about connected devices and status. The high PoE power output allows for connection of up to 16 PoE cameras.



AXIS T8524 PoE+ Network Switch

AXIS T8524 PoE+ Network Switch is an easy to install 24-port managed Gigabit switch - a perfect complement to Axis' recorders to further simplify setup and installation of surveillance systems. AXIS T8524 comes with an integrated DHCP server for automatic assignment of IP addresses and discovery of connected Axis devices. The intuitive administrator interface offers a graphic topology for easy overview of all devices in the system with information about connected devices and status. The high PoE power output allows for connection of up to 24 PoE cameras.



2 × AXIS C1310-E Mk II

AXIS C1310-E Mk II Network Horn Speaker is perfect for outdoor environments in most climates. It allows users to remotely prevent unwanted activities, to deliver instructions during an emergency or to make general voice messages. Built-in memory supports pre-recorded messages, or security personal can respond to notifications with live speak. Open standards support easy integration with network video, access control, analytics, and VoIP (supporting SIP). Digital signal processing (DSP) ensures clear sound. The built-in microphone enables remote health testing and 2-way communication. Furthermore, the embedded audio management software supports user, content, zone, and scheduling management.

[Outdoor ready](#) | [Two-way audio](#) | [Audio support](#) | [Built-in microphone](#) | [Built-in speaker](#)

Exterior Surveillance Conduit Installation

Responsibility:

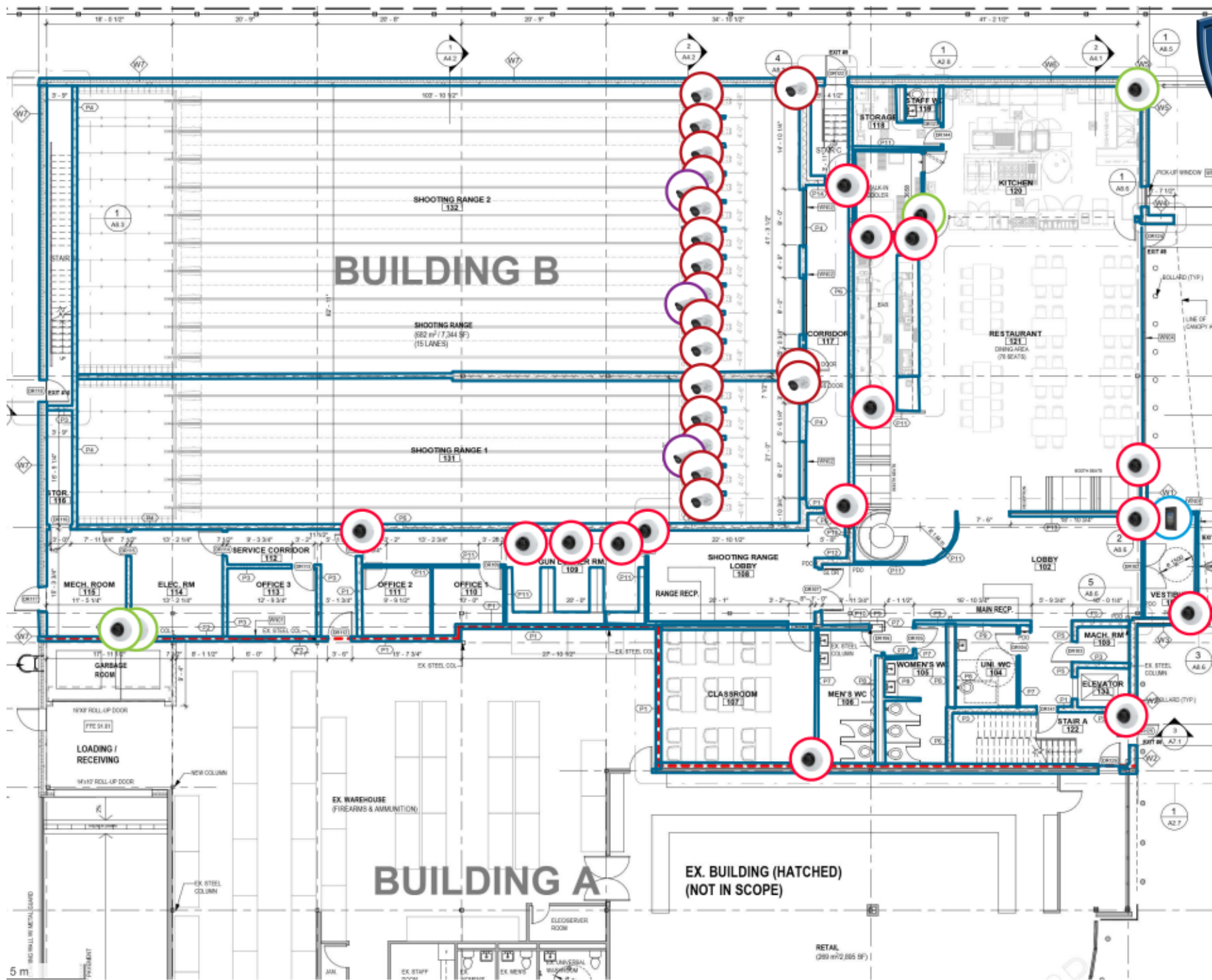
New Age Group is responsible for providing and installing conduits for all exterior surveillance devices. This includes the complete conduit run from the Head End or Sub Panel directly to each device.

Specifications:

- Conduit Type:** Liquid-Tight Flexible Conduit will be used for the entire exterior conduit installation.
- Scope:** This applies to all exterior surveillance devices, excluding conduit work for the exterior gates / gate devices



Racks layout to be provided once project approved



BUILDING A

EX. BUILDING (HATCHED)
(NOT IN SCOPE)

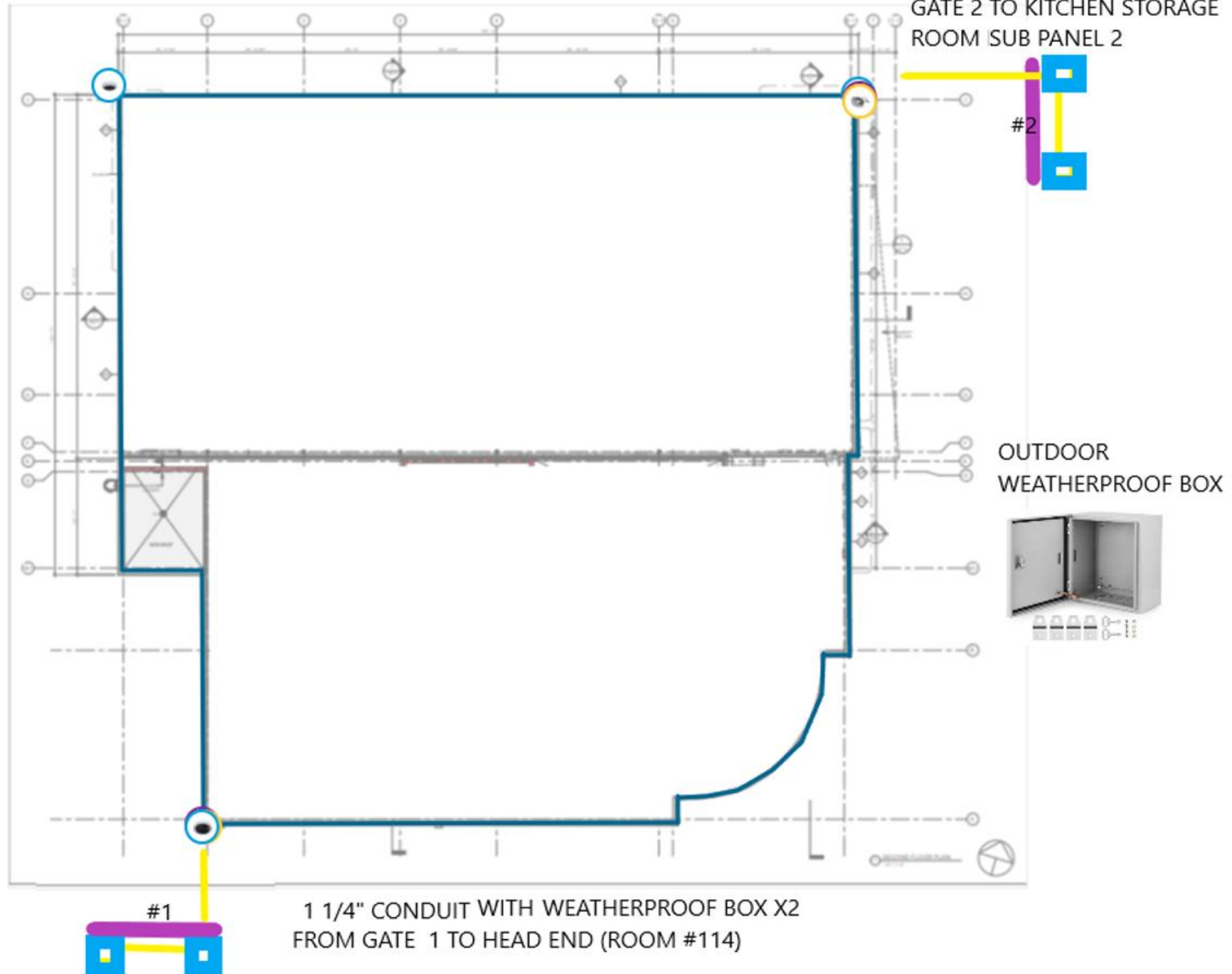
RETAIL
(209 m²/2,205 SF)



Conduit Specification for Surveillance Systems:

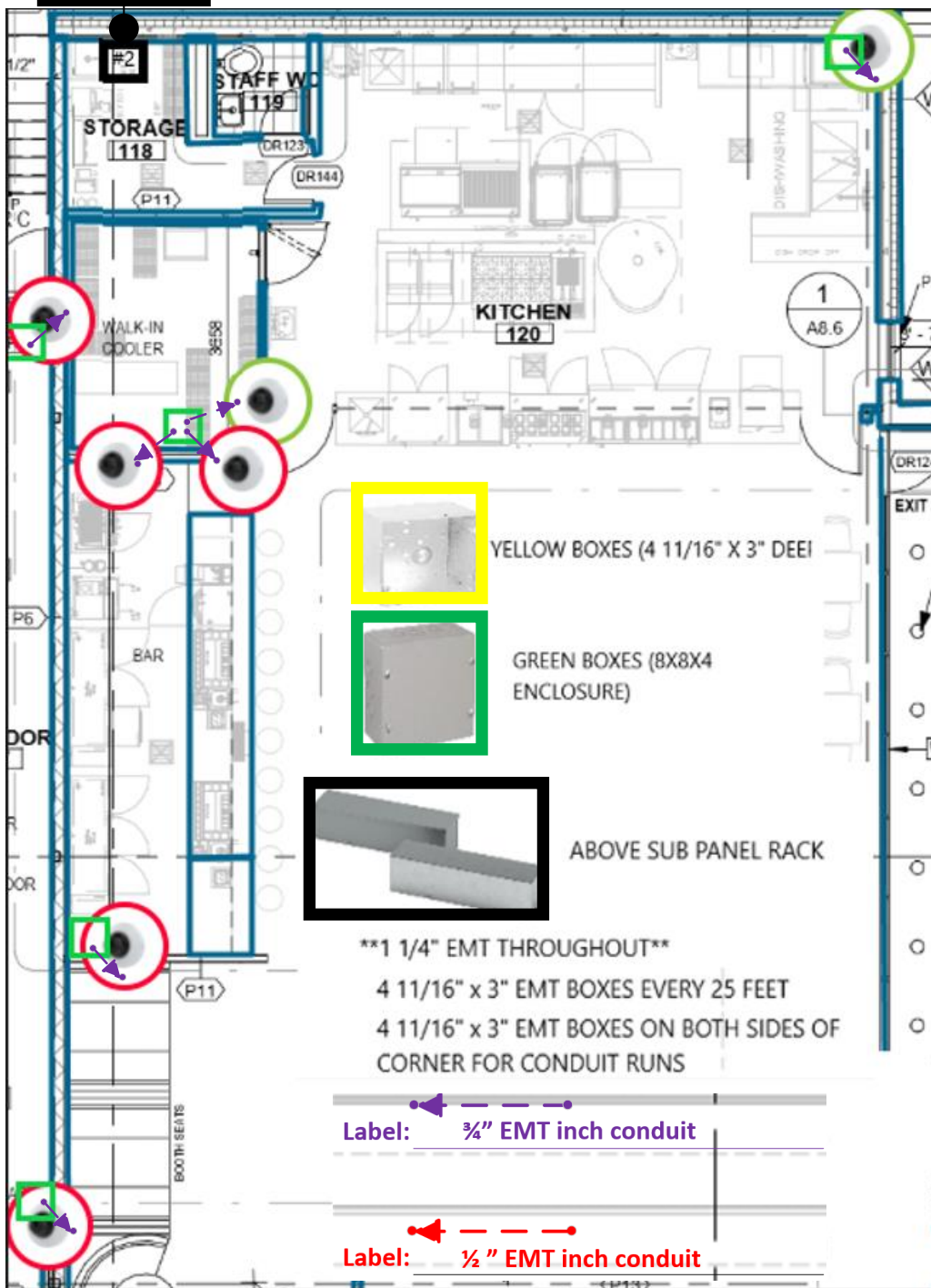
1. **Conduit Type:**
 - Use **Electrical Metallic Tubing (EMT)** or **Rigid Metal Conduit (RMC)** for indoor installations.
2. **Conduit Size:**
 - Minimum conduit size: 1 ¼ **inch** for single runs.
3. **Conduit Routing:**
 - Conceal conduit within walls, ceilings, or floors where possible.
 - Avoid sharp bends; use long-radius elbows.
 - Maintain separation from high-voltage power lines (minimum 12 inches).
4. **Conduit Termination:**
 - Terminate with **bushings** or **grommets** to protect cable sheathing.
 - Use **pull boxes** or **junction boxes** at regular intervals and at changes in direction (i.e. every 25FT).
5. **Pull Strings:**
 - Install **pull strings** in all conduits .
6. **Conduit Labeling:**
 - Label all conduits at both ends with destination and purpose (e.g., "Sub Panel #1 ").
7. **Sealing and Firestopping:**
 - Seal all conduit penetrations through fire-rated walls and floors with **UL-listed firestop systems**.
8. **Grounding:**
 - Ensure all metallic conduits are properly **bonded and grounded**.
9. **Environmental Considerations:**
 - Use **corrosion-resistant** conduit in damp or corrosive environments.
10. **Code Compliance:**
 - All conduit installations must comply with **Canadian Electrical Code** and local building codes.
11. **Coordination:**
 - Coordinate conduit paths with other trades to avoid conflicts.

GATE Conduit For Surveillance

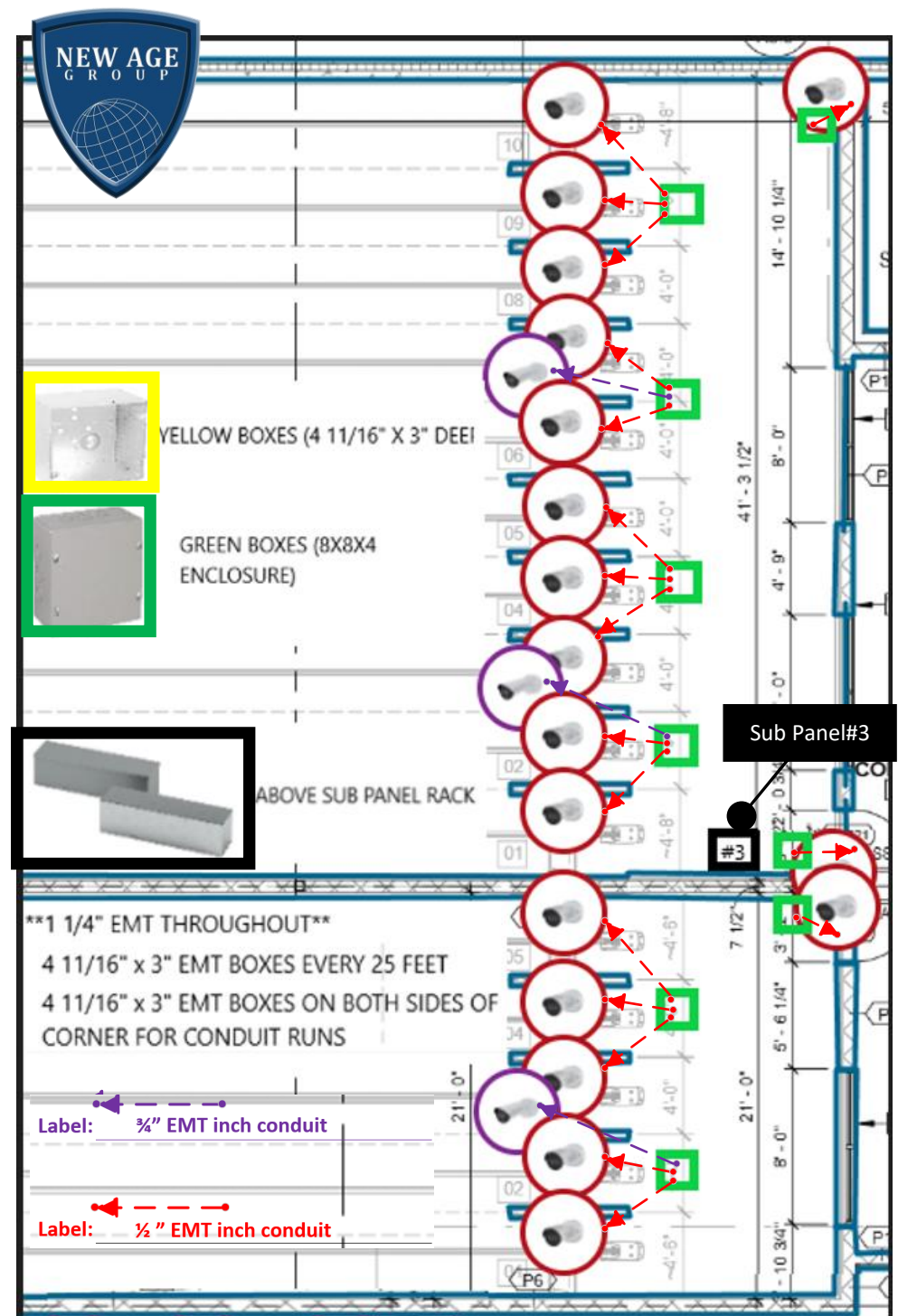


Ground Floor Outdoor Gate Conduit drawing

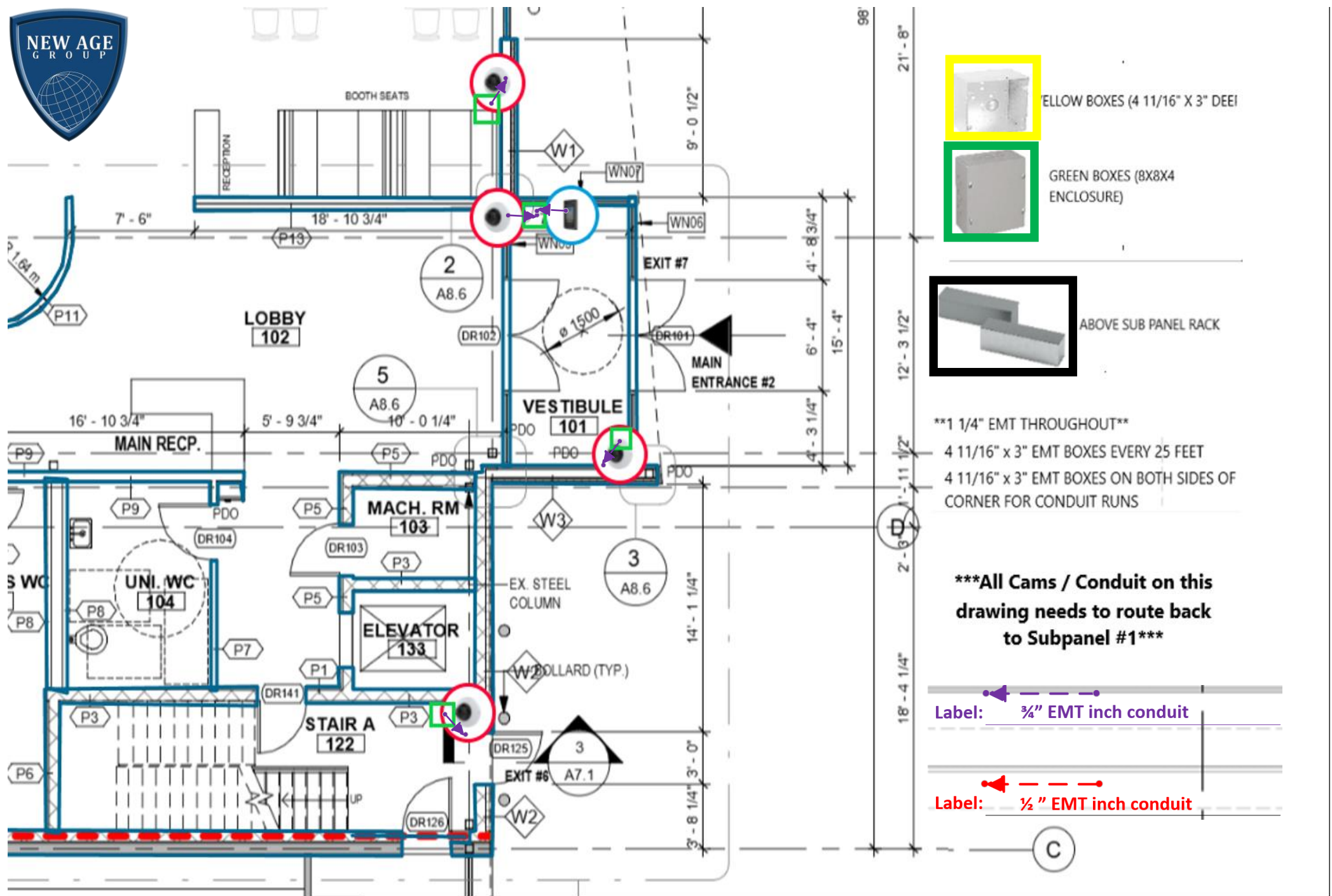
Sub Panel#2



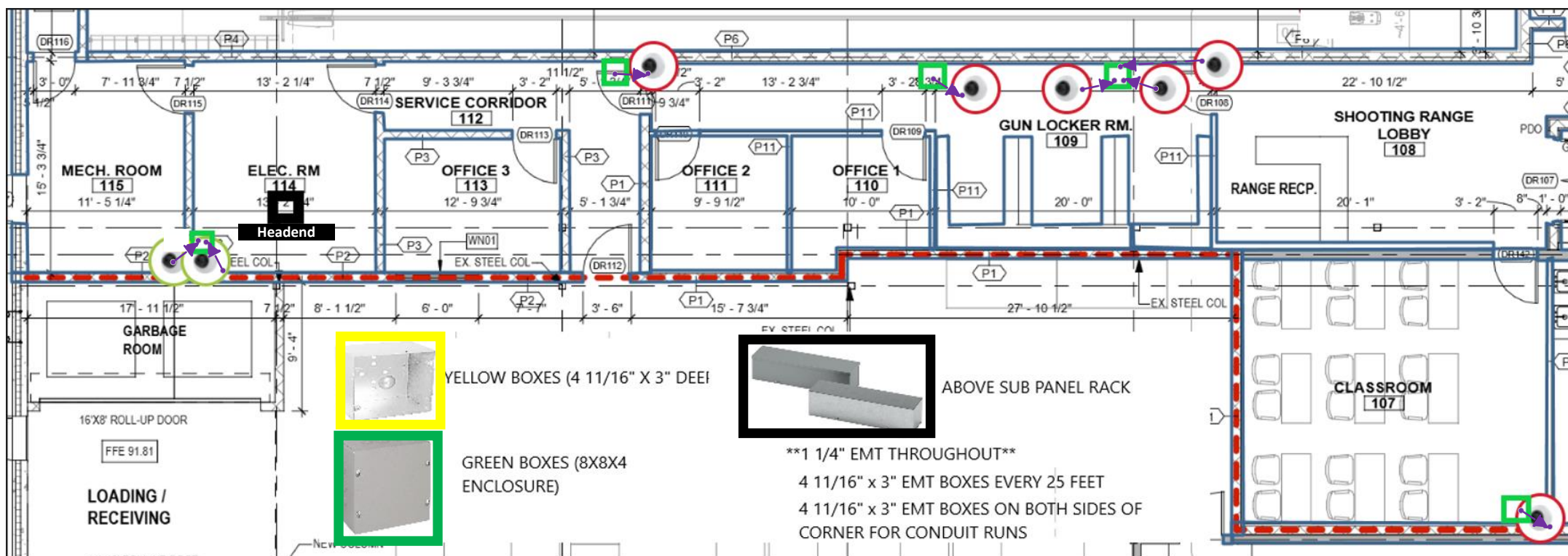
Ground Floor Shooting Range Conduit drawing



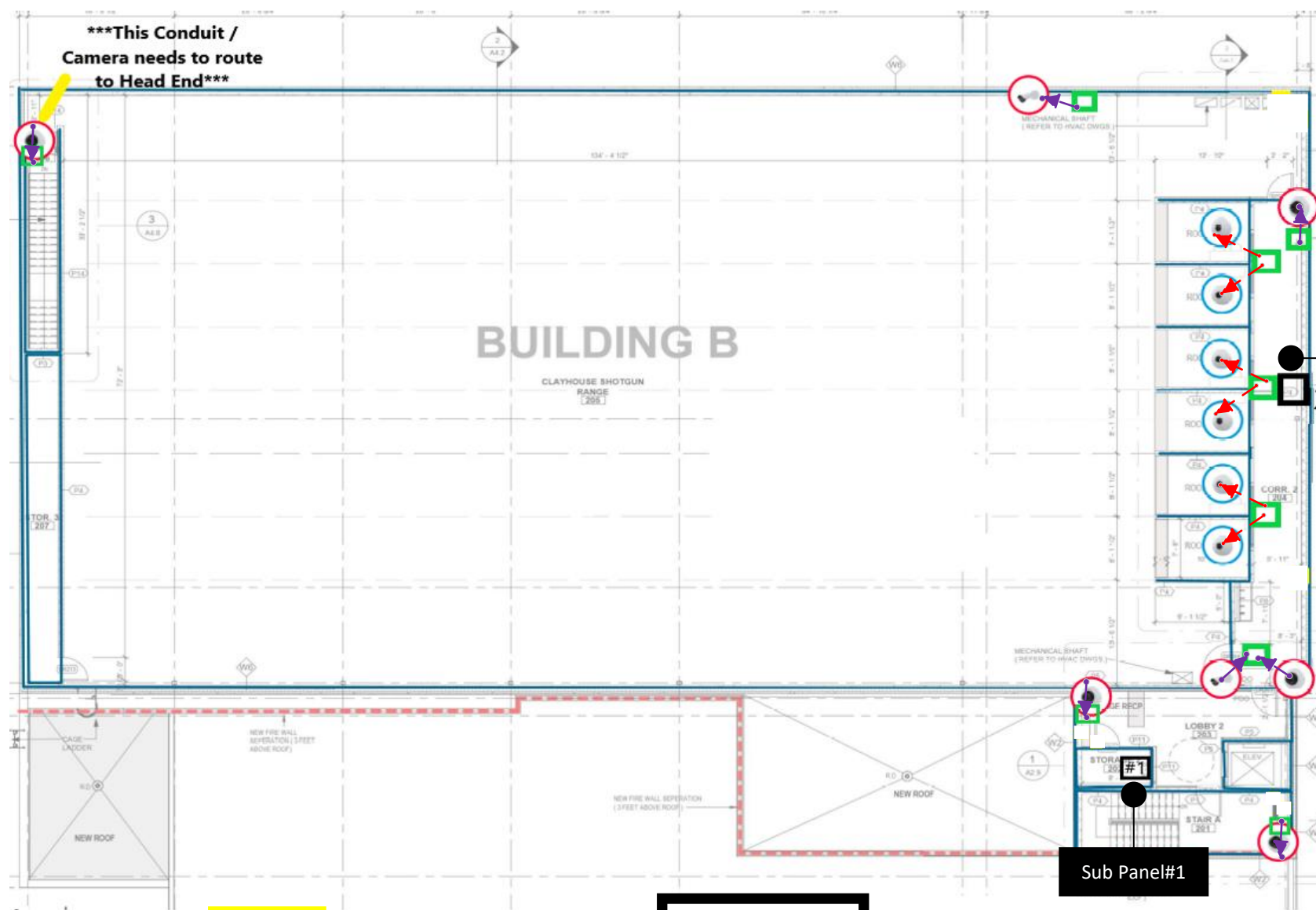
Ground Floor Kitchen Storage Subpanel Drawing



Ground Floor Lobby and Restaurant Area Conduit Drawing



Ground Floor -Classroom and Gun Locker Room Conduit Drawing



4 11/16" x 3" EMT BOXES EVERY 25 FEET
4 11/16" x 3" EMT BOXES ON BOTH SIDES OF
CORNER FOR CONDUIT RUNS

Label: ½ " EMT inch conduit

2nd Floor - Conduit Drawing