



ADDENDUM NO. 1

2025-36 ECA WASHROOM ALTERATIONS RUSS POWELL CENTRE

- 1.1 The following additions, deletions and items of clarification shall be included as an integral part of the tender documents:
- 1.2 Refer to the Specification Manual.
Specification Section 08710 Finish Hardware is bound herein.
- 1.3 Refer to Specification Section 0600. Delete reference to " Bonds and Certificates."
Delete reference to " Performance Bond "
Delete reference to " Labour and Materials Payment Bond"
Bonding is not a requirement for this project.
- 1.4 Contractor shall be required to provide a Certificate of Insurance for Commercial General Liability in the amount of \$ 2.0 million dollars as per CCDC 2020 with The Central Lake Ontario Conservation Authority as Additional Named Insured within 10 days of notice of contract award and prior to commencing any work on site.
- 1.5 Contractor shall be required to maintain Builder's risk insurance for their operations on site for the value of the Construction Contract from contract award to Substantial Completion.
- 1.6 Contractor shall be required to maintain a minimum of \$ 2.0 Million dollar Liability insurance policy on owned and non owned vehicles. Certificate of Insurance to be provided to the Owner.
- 1.7 Contractor shall provide a Notice of Project to the Ontario Ministry of Labour and post on site.

PART 1 GENERAL**1.1 Conditions**

- 1.1.1 The work associated with this section shall comply with the pertinent sections and articles in Division 1 - General Requirements.

1.2 Description

- 1.2.1 Supply finish hardware as per finish hardware schedule enclosed and turn over to Section 06200 for installation.
- 1.2.2 Cylinders shall be keyed to the building standards.
- 1.2.3 Provide all necessary co-ordination and supervision of field installation.
- 1.2.4 The hardware supplier shall supply and install the power door operators and connect the low voltage controls for the door operators. Contractor's Electrician shall supply and install the low voltage control wiring from the electric strike to the door head and to the actuators and emerg kit devices. Power supply for the power door operators to be provided by the Electrical subcontractor.
- 1.2.5 Inspect completed installation and verify proper hardware operation.

1.3 Reference Standards

- 1.3.1 Canadian Metric Guide for Steel Doors and Frames (Modular Construction) prepared by Canadian Steel Door and Frame Manufacturers Association.

1.4 Requirements of Regulatory Agencies

- 1.4.1 Use ULC listed and labelled hardware for doors in fire separations and exit doors.

1.5 Samples

- 1.5.1 Upon request submit samples of each type of hardware specified, in accordance with Section 01300.

1.6 Hardware List

- 1.6.1 Submit hardware schedule and catalogue cuts in accordance with Section 01300. List hardware, including make, model, material, function, finish and door number.

1.7 Maintenance Data

- 1.7.1 Provide maintenance data, parts list, and manufacturer's instructions for door closers, locksets, door holders and fire exit hardware for incorporation into maintenance manual specified in Section 01300.
- 1.7.2 Brief maintenance staff regarding proper care, cleaning, and general maintenance.

1.8 Maintenance Materials

- 1.8.1 Store finishing hardware in locked, clean and dry area.
- 1.8.2 Package each item of hardware including fastenings, separately or in like groups of hardware, label each package as to item definition and location.
- 1.8.3 Maintain inventory list with hardware schedule.

PART 2 PRODUCTS

2.1. Interior Locations and HM Doors

As scheduled.

2.2 Fastenings

2.2.1 Supply screws, bolts, expansion shields and other fastening devices required for satisfactory installation and operation of hardware.

2.2.2 Exposed fastening devices to match finish of hardware.

2.2.3 Where pull is scheduled on one side of door and push plate on other side, supply fastening devices, and install so pull can be secured through door from reverse side. Install push plate to cover fasteners.

2.2.4 Use fasteners compatible with material through which they pass.

2.3 Hardware Mounting

2.3.1 Provide templates to section 06200, 08111; 08200, 08550.

PART 3 EXECUTION

3.1 Installation Instructions

3.1.1 Furnish door and frame manufacturers with complete instructions and templates for preparation of their work to receive hardware.

3.1.2 Where door stop contacts door pulls, mount stop to strike bottom of pull.

3.2 Supplier

3.2.1 Supplier shall be responsible for the administration and servicing of the hardware contract. Personnel administering this Section shall be A.H.C. or equal experience.

3.2.2 The Hardware Specialist shall make periodic inspections of the hardware installations and shall expedite the correction of defective hardware. This specialist shall attend site meetings when so requested.

3.3 Shipping

3.3.1 All items of hardware shall be delivered to the job site packaged. Each item shall be clearly marked with proper opening number and item number for proper location.

3.4 Finishing Hardware Schedule

3.4.1 Receive and install the following finishing hardware as itemized hereafter:

Finish Hardware Schedule:

Rivett Architectural Hardware Ltd.

Door Listing

CLOCA RUSS POWELL NATURE CTR - 7274 HOLT RD. ENNISKILLEN, ON

Schedule 200794
Date Nov 18/25

Door Number	Set Number
D05	1
D06	2

Rivett Architectural Hardware Ltd.

Hardware Schedule

CLOCA RUSS POWELL NATURE CTR - 7274 HOLT RD. ENNISKILLEN, ON

Schedule 200794
Date Nov 18/25

Set # 1

1 SGLE. DR. # D05 EIXISTING CORRIDOR TO NEW UNIVERSAL WASHROOM RHR

1 - 3'2" x 7'0" x 1-3/4" x PSF x HMD

Qty

:	:	3 EA	HINGE	BB1168-114 X 101-NRP-626
:	:	1 EA	STOREROOM LOCK	ND80PD X RHO X ASA X 626
:	:	1 EA	DOOR OPERATOR	SW200i X SINGLE HSG X 628
:	:	1 EA	OCCUPIED & EMERGENCY KIT SURF	#OCC-2-EMR-S ILL KIT
:	:	1 EA	ELECTRIC STRIKE	1600CLB X 630
:	:	1 EA	KICKPLATE	190S X 304 X 914 X 630
:	:	1 EA	WALL STOP	232W X 626

Set # 2

1 SGLE. DR. # D06 EXISTING CORRIDOR TO ALL GENDER WASHROOM LHR

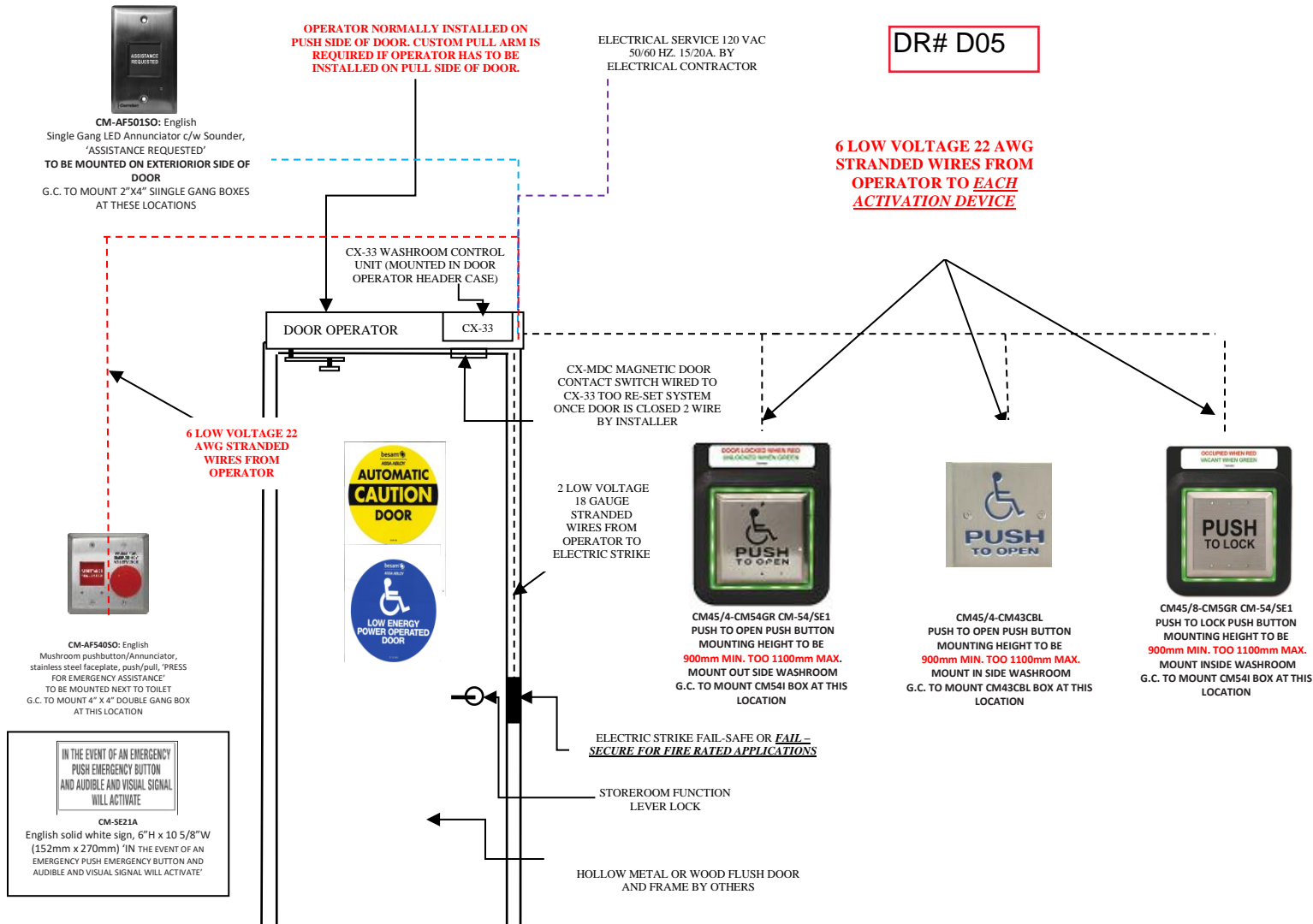
1 - 3'2" x 7'0" x 1-3/4" x PSF x HMD

Qty

:	:	3 EA	HINGE	BB1168-114 X 101-NRP-626
:	:	1 EA	DEADBOLT	B663P X 2.75 X 626
:	:	1 EA	DOOR OPERATOR	SW200i X SINGLE HSG X 628
:	:	2 EA	PUSH TO OPEN BUTTON	#CM-45/4 X 630
:	:	1 EA	PUSH PLATE	30S X 101 X 406 X 630
:	:	1 EA	DOOR PULL	31G X 8" X 628
:	:	1 EA	KICKPLATE	190S X 304 X 914 X 630
:	:	1 EA	WALL STOP	232W X 626

RIVETT ARCHITECTURAL HARDWARE LTD.

B/F WASHROOM DOOR C/W AUTOMATIC OPERATOR & #OCC2 EMR-S-ILL KIT



PULL SIDE BUTTONS
NO CLOSER THAN
600 mm – 23 ½"
BEYOND DOOR SWING

REQUIRES 3 SINGLE GANG BOX INTERIOR
REQUIRES 1 DOUBLE GANG BOX INTERIOR
REQUIRES 2 SINGLE GANG BOX EXTERIOR

RIVETT ARCHITECTURAL HARDWARE LTD.

STANDARD SINGLE DOOR C/W SW200i OPERATOR C/W SURFACE MOUNT BUTTONS

OPERATOR NORMALLY INSTALLED ON PUSH SIDE OF DOOR. CUSTOM PULL ARM IS REQUIRED IF OPERATOR HAS TO BE INSTALLED ON PULL SIDE OF DOOR.

DR# D06

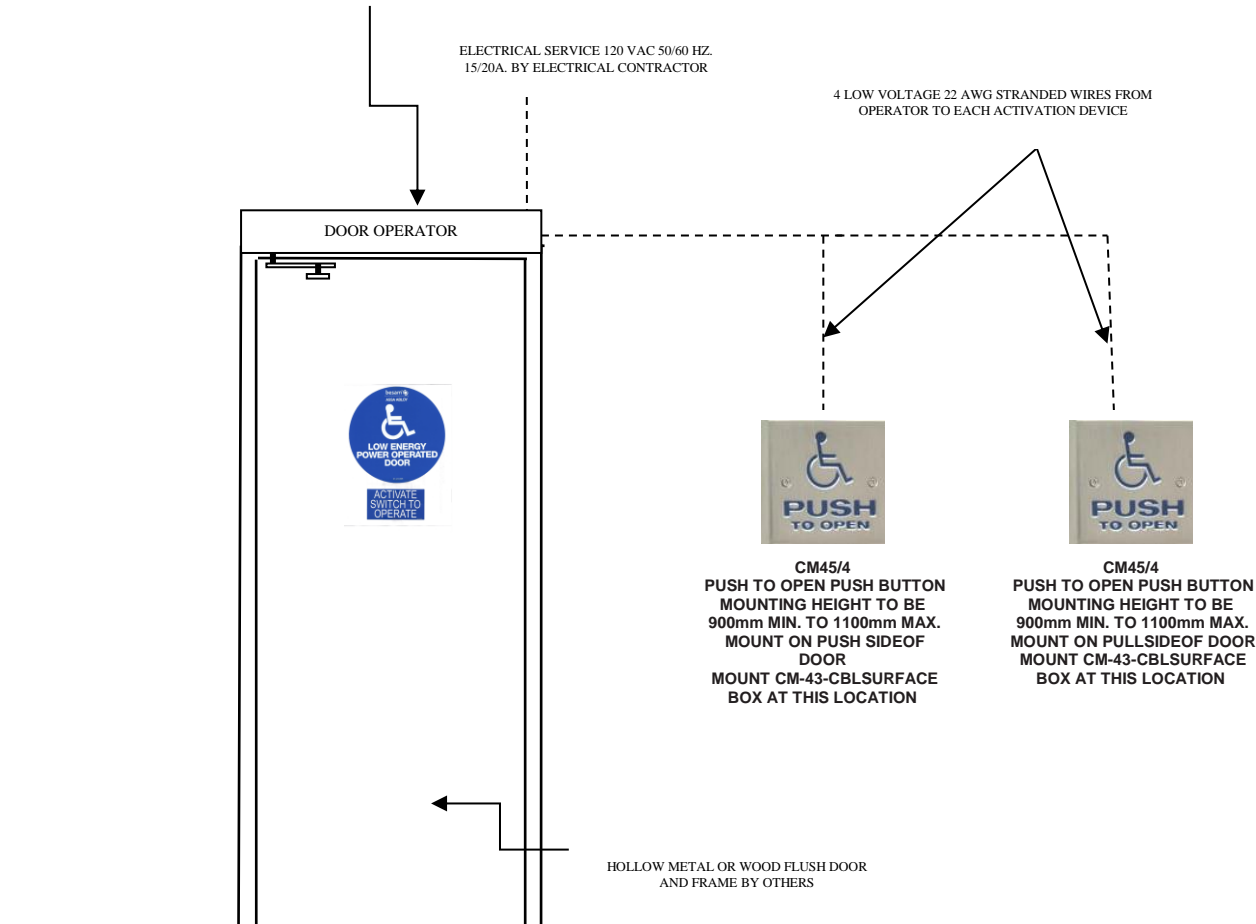
EXPLANATION OF USE:

B/FREE OPERATION

1. TO OPEN DOOR ACTIVATE THE DOOR BY THE EXTERIOR HANDICAPPED PUSHPLATE AND THE DOOR WILL SLOWLY POWER OPEN, TIME OUT AND SLOWLY CLOSE.
2. TO EXIT ACTIVATE INTERIOR HANDICAPPED PUSHPLATE AND THE DOOR WILL SLOWLY OPEN.

NOTES:

1. THIS WIRING SCHEMATIC DIAGRAM IS APPLICABLE TO BESAM POWERSWING DOOR OPERATORS ONLY. COORDINATE WITH RIVETT ARCHITECTURAL HARDWARE FOR WIRING DETAILS.
2. DOOR OPERATOR SYSTEM SHALL BE SUPPLIED AND INSTALLED BY RIVETT ARCHITECTURAL HARDWARE LTD.
3. 120VAC WIRING TO DOOR OPERATOR HEADER AND LOW VOLTAGE WIRING WITH ELECTRICAL BOXES FOR SWITCHES WILL BE BY ELECTRICAL CONTRACTOR

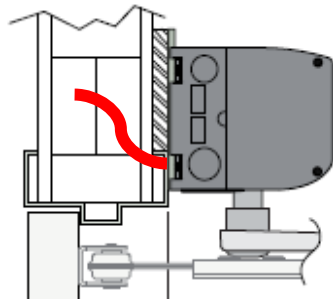


**PULL SIDE BUTTONS
NO CLOSER THAN
600 mm – 23 ½”
BEYOND DOOR SWING**

**REQUIRES 1 SINGLE GANG BOX INTERIOR
REQUIRES 1 SINGLE GANG BOX EXTERIOR**

RIVETT ARCHITECTURAL HARDWARE LTD.

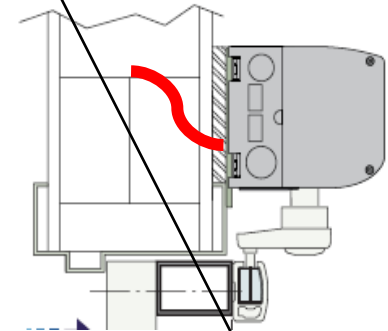
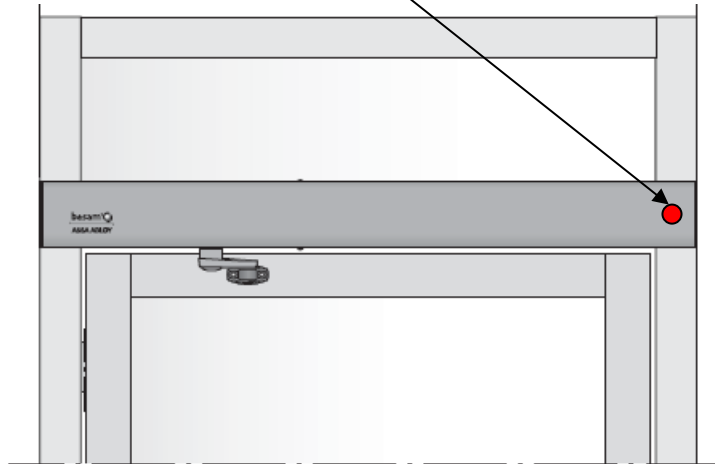
STANDARD WIRE LOCATIONS FOR DOOR OPERATORS



STANDARD PUSH SIDE MOUNTED OPERATOR

WIRES TO EXIT THROUGH FRAME AT
STRIKE OF THE FRAME AS SHOWN
IF IT IS A DOUBLE DOOR APPLICATION
THEN WIRES TO EXIT 36" FROM HINGE
EDGE OF DOOR.

SUPPLY VOLTAGE & LOW VOLTAGE CONTROL
WIRES TO EXIT AT STRIKE SIDE OF FRAME, OR AT
36" FROM HINGE EDGE OF DOOR ON DOUBLE
DOOR APPLICATION. LEAVE SUFFICIENT WIRE TO
REACH TO OPPOSITE SIDE OF DOOR.



CUSTOM PULL SIDE MOUNTED OPERATOR

WIRES TO EXIT BETWEEN 1" & 3" ABOVE
FRAME AT STRIKE SIDE OF THE FRAME
AS SHOWN.

IF IT IS A DOUBLE DOOR APPLICATION
THEN WIRES TO EXIT 36" FROM HINGE
EDGE OF DOOR.

BB1168

BB1168



SPECIFICATIONS

Applications	For use on heavy weight doors and doors requiring high frequency service
Box Quantity	3
Case Quantity	24
Certifications	ANSI A8111
Electric Modifications	EMN (Electric Monitor Only), ETW (Electric Through-Wire Only), ETM (Electric Through-Wire with Monitoring), Quick Connect
Features	<ul style="list-style-type: none"> • Four ball bearings • Removable or non-removable pin with button tip and plug • Available in two different leaf sizes
Finishes	<ul style="list-style-type: none"> • LS, USP, US3, US10, US10A, US10B, US15, US26, US26D • Additional finishes may be available, please contact Hager for availability and lead time.
Fire Rating	Complies with NFPA80 requirements for use on fire rated door assemblies
Gauge	See Sizing Chart Options
Height	See Sizing Chart Options
Knuckles	5
Material	Steel with Steel Pin
Options	<ul style="list-style-type: none"> • Stamped with UL logo when ordered for export • Unequal top/bottom available in non-removable or removable pin
Product Description	Full Mortise, Ball Bearing, Heavy Weight
Width	See Sizing Chart Options



ND Series

Grade 1 Cylindrical Locks

Mechanical | Wired Electrified | Wireless Electronic

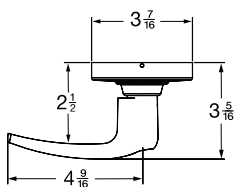


Commercial.Schlage.com

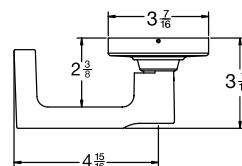
Trims & Finishes

Lever Designs & Finishes

Athens (ATH)

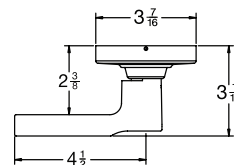


Cores KIL, FSIC, SFIC, L-CO, L-SA, J-CO6, J-ME, J-SA, J-YA6

Boardwalk (BRK)¹

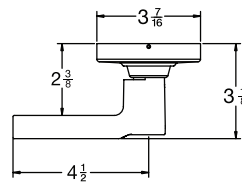
Cores KIL, FSIC, SFIC

Broadway (BRW)

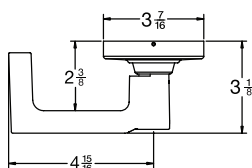
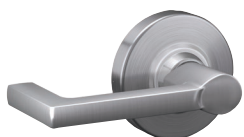


Cores KIL, FSIC, SFIC

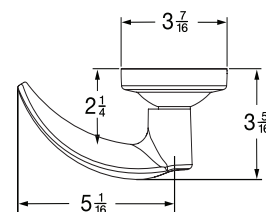
Latitude (LAT)



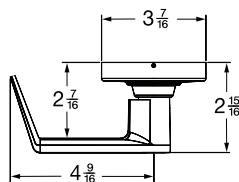
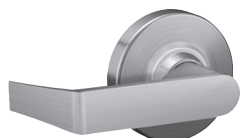
Cores KIL, FSIC, SFIC

Longitude (LON)¹

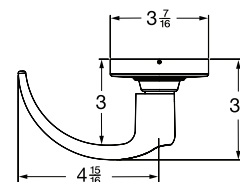
Cores KIL, FSIC, SFIC

Omega (OME)¹

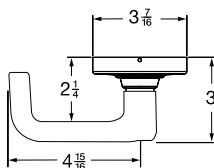
Cores KIL, FSIC, SFIC

Rhodes (RHO)¹

Cores KIL, FSIC, SFIC, L-CO, L-SA, J-CO6, J-CO7, J-ME, J-SA, J-YA6, J-YA7

Sparta (SPA)¹

Cores KIL, FSIC, SFIC, L-CO, L-SA, J-CO6, J-ME, J-SA, J-YA6

Tubular (TLR)¹

Cores KIL, FSIC, SFIC, L-CO, L-SA, J-CO6, J-ME, J-SA, J-YA6

Finishes



605
Bright Brass



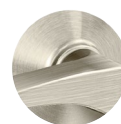
606
Satin Brass



612
Satin Bronze



613²
Oil Rubbed
Bronze



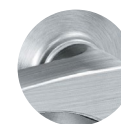
619
Satin Nickel



622
Matte Black



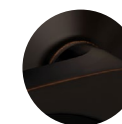
625
Bright
Chrome



626/626AM
Satin
Chrome/
Antimicrobial



630³
Satin
Stainless
Steel



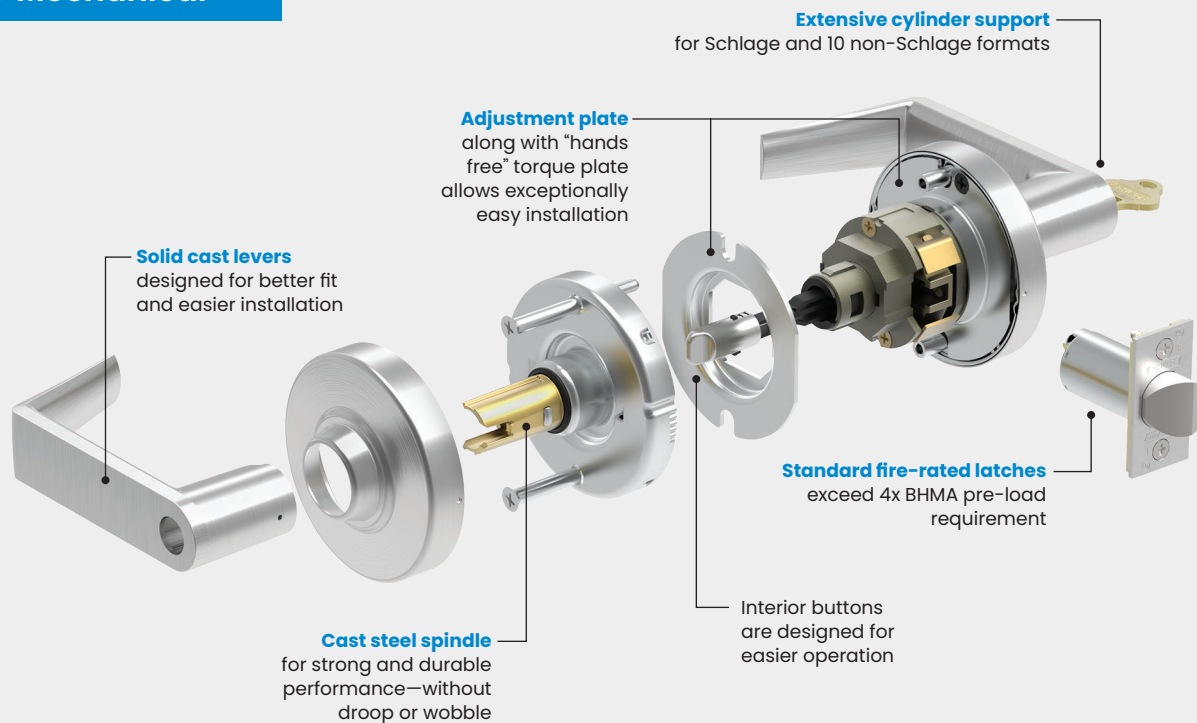
643e
Aged Bronze

1. Boardwalk, Longitude, Omega, Rhodes, Sparta, and Tubular levers comply with California state code for return within 1/2" of door face.

2. NDE wireless electronic locks not available in 613 finish.

3. Available on HSLR trim only.

ND Mechanical



Quality You Can See and Feel

Strength and durability are more than numbers, you can actually feel it in the lock — in the weight and movement of the lever and in the lasting beauty of the finish. Expect exceptional durability from ND Series.

- Tested to over 16 million cycles with near zero droop or wobble in the lever (16x the BHMA requirement)
- Latch retraction with 200 lb preload for confident operation in warped and preloaded doors (4x BHMA requirement)
- Prevents access even when subjected to torque loads up to 3,100 in-lbs (2.6x the BHMA standard)
- Withstands pry bar attacks of 1,600 lbs (8x BHMA requirement)
- Withstands 100 sledgehammer blows (20x BHMA requirement)

The Added Benefits of Layered Key System Security

A strong lock is only part of the security equation for mechanical locks—proper key security is equally important.

- Patented Everest 29™ cylinders prohibit unauthorized key duplication at local retail stores
- Dealer and end user restricted, geographically exclusive Primus cylinder options for advanced key control
- Available compatibility with 10 different non-Schlage key systems

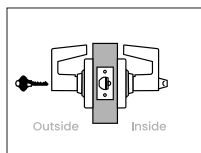
Key Features

ND Series offers Schlage's widest array of finishes, styles and functions available in a cylindrical lock.

- 25 mechanical, cylindrical functions plus eight that feature Vandlgard® locked lever protection
- Nine standard finishes, plus an antimicrobial coating option
- Nine ADA compliant lever options
- Status indication and ligature-resistant trim options
- BAA compliant
- Locks are ANSI/BHMA Grade 1 certified
- Available with lead lining
- UL Listed 3-hour fire rated
- Perfectly suited to the ALX Series Grade 2 cylindrical locks
- Supports Conventional, FSIC, and SFIC cylinder formats plus high-security UL 437 and competitive core options
- Multiple key system options include open, patented, restricted, and geographically exclusive

Mechanical Lock Functions

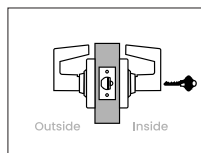
Keyed Functions

Schlage
ND53**ANSI**
F109**Entrance lock**

- Lever with key cylinder outside; push/turn button in lever inside; deadlatch
- In unlocked state latch is retracted by either lever
- Outside lever is made inoperative by pushing button or pushing and turning button on inside lever; key outside does not lock
- **Pushed button unlocking:** key outside or rotating inside lever retracts latch and releases button unlocking outside lever
- **Pushed/turned button unlocking:** key outside or rotating inside lever retracts latch but does not unlock outside lever; rotate inside button to start position to allow button release and unlocking by key or by rotating inside lever
- Inside lever always free for immediate egress

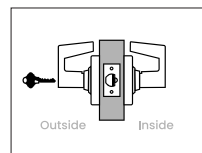
Caution: Egress without fully releasing the push/turn button can result in lock-out situations.

Note: Locks ordered with indicator trim fit 1-3/4" doors. Sold separate spacer kits allow application to doors 1-3/8" to 1-11/16".

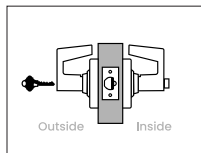
Schlage
ND60 with XN12-001**ANSI**
F109**Vestibule lock with interior unlocking only**

- Lever outside; lever with key cylinder inside; deadlatch
- In unlocked state latch is retracted by either lever
- Outside lever is locked or unlocked by key inside
- Inside lever always free for immediate egress

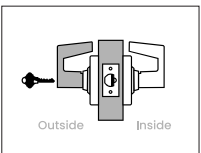
To order, specify function and note XN12-001 as a special option.

ANSI
Schlage
- ND70**ANSI**
F84**Classroom lock, exterior lockdown only**

- Lever with key cylinder outside; lever inside; deadlatch
- In unlocked state latch is retracted by either lever
- Outside lever is locked or unlocked by key outside
- Inside lever always free for immediate egress

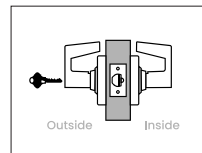
Schlage
ND73**ANSI**
F90**Corridor lock**

- Lever with key cylinder outside; push button in lever inside; deadlatch
- In unlocked state latch is retracted by either lever
- Outside lever is made inoperative by pushing button on inside lever or by key outside
- **When locked by pushed button:** rotating inside lever retracts latch and releases button unlocking outside lever; closing door also unlocks preventing lock-out
- **When locked by key:** rotating inside lever retracts latch but outside lever remains fixed until unlocked by key outside
- Inside lever always free for immediate egress

Schlage
ND80**ANSI**
F86**Storeroom lock**

- Lever with key cylinder outside; lever inside; deadlatch
- Outside lever always fixed; latch retracted by inside lever
- Key in outside lever retracts latch only
- Inside lever always free for immediate egress

To order configured with Request to Exit (RX), specify RX under special options.

Schlage
ND81**ANSI**
F86**Accessible storeroom lock**

- Lever with key cylinder outside; lever inside; deadlatch
- Outside lever is always fixed when key is not present; latch retracted by inside lever
- Key outside turned counter-clockwise retracts latch; 180-degree clockwise rotation of key allows outside lever to retract latch
- Inside lever always free for immediate egress

To order configured with Request to Exit (RX), specify RX under special options.

Deadbolt designs

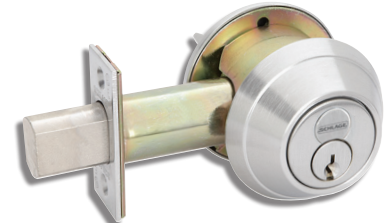
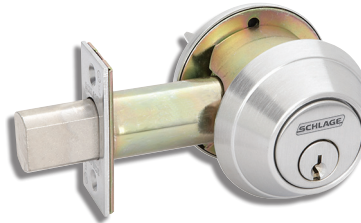
B600 Series

Schlage's toughest heavy duty Grade 1 commercial deadbolt.

Furnished with conventional cylinder standard.

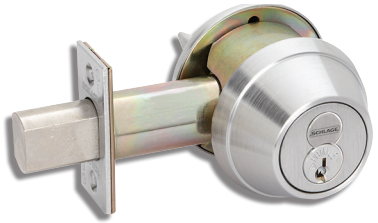
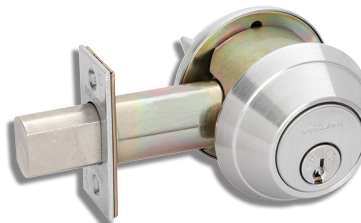
Also available with full size interchangeable core cylinder or small format interchangeable core (SFIC) cylinder.

Requires 2 1/8" (54mm) prep. UL10B and UL 10C listing standard for auxiliary lock on A label fire doors. Not all functions available as fire rated auxiliary locks. See function charts for required cross bore dimensions.



B700 Series

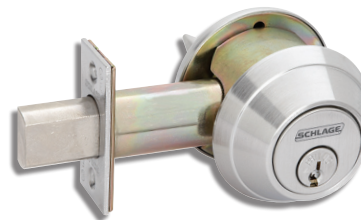
Same lock as B600 Series but furnished with Primus XP controlled access cylinder for patented key control, geographical exclusivity and resistance to picking and impressioning. Also available with Primus XP full size interchangeable core cylinder.





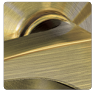








B800 Series

Same lock as B700 Series but Primus XP high security cylinder is UL437 listed to resist drilling and other forms of physical attack. Not available in interchangeable core.

All designs shown in 626 satin chrome



Deadbolt finishes

											
	605 Bright brass	606 Satin brass	609 Antique brass	612 Satin bronze	613 Oil rubbed bronze	619 Satin nickel	622 Matte black	625 Bright chromium plated	626 Satin chromium plated	626AM Anti- microbial coating	643e Aged bronze
B600/700/800											
B600	•	•	•	•	•	•	•	•	•	•	•
B700	•	•	•	•	•	•	•	•	•	•	•
B800	•	•	•	•	•	•	•	•	•	•	•

e = an equivalent finish to the BHMA standard.

Schlage ANSI
B662P* **E0141**

Double cylinder deadbolt

- Deadbolt thrown or retracted by key on either side

Outside Inside



Schlage ANSI
B663P **E0171**

Classroom deadbolt

- Deadbolt thrown only by key outside.
- Deadbolt retracted by key outside or thumbturn inside

Outside Inside



Schlage ANSI
B664P **E0101**

Cylinder only deadbolt

- Deadbolt thrown or retracted by key one side
- No trim on inside
- 1 1/2" bore only¹

Outside Inside



Schlage ANSI
B680 **E0191**

Door bolt

- Deadbolt thrown or retracted by thumbturn inside
- No outside trim
- 1 1/2" bore only¹

Outside Inside



Schlage ANSI
B762P* **E0141**

Double cylinder deadbolt

- Deadbolt thrown or retracted by key on either side

Outside Inside



Schlage ANSI
B763P **E0171**

Classroom deadbolt

- Deadbolt thrown only by key outside
- Deadbolt retracted by key outside or thumbturn inside

Outside Inside



Schlage ANSI
B764P **E0101**

Cylinder only deadbolt

- Deadbolt thrown or retracted by key one side
- No trim on inside
- 1 1/2" bore only¹

Outside Inside



Schlage ANSI
B862P* **E0141**

Double cylinder deadbolt

- Deadbolt thrown or retracted by key on either side

Outside Inside



Schlage ANSI
B863P **E0171**

Classroom deadbolt

- Deadbolt thrown only by key outside
- Deadbolt retracted by key outside or thumbturn inside

Outside Inside



Schlage ANSI
B864P **E0101**

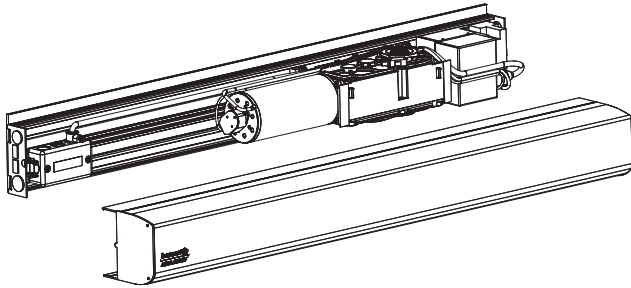
Cylinder only deadbolt

- Deadbolt thrown or retracted by key one side
- No trim on inside
- 1 1/2" bore only¹

Outside Inside



1. See template for details



SW200i Swing Door Operator

The Besam SW200i automatic swing operator is intended for use in exterior or interior entryways, corridors and a variety of applications. The Besam SW200i heavy duty (HD) electro-mechanical operator is suitable for use on large heavy doors, yet adaptable enough to be used in low energy (LE) applications. The product can be either surface mounted or overhead concealed, on either side of the door, for pull or push applications. It is suitable for single doors, double doors and double egress doors fitted with swing clear hinges, offset pivots or center pivots. The operator is connected to the door leaf with a range of different arm systems.

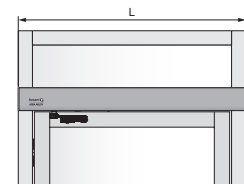
Besam SW200i is designed to offer continuous use, a high degree of safety and maximum performance over the lifetime of your entrance. The Besam SW200i ensures all-around safety and can be equipped with a full range of sensor products providing swing door safety that meets or exceeds ANSI A156.10 standard.

Operator Features and Performance

- Operator: electro-mechanical, non-handed operator, 24 volt, $\frac{5}{16}$ hp motor
- ANSI Compliance: Field selectable full pedestrian usage (ANSI A156.10) and low energy (ANSI A156.19)
- Door Weight: up to 700 pounds (315 kg) per operator
- Door Size: up to 48" (consult for wider sizes)
- Manual Push Force: adjustable from 5 lbf – 15 lbf
- Hold Open Time: adjustable from 1.5 seconds to 30 seconds
- Wind Force Dampening: operator mechanically counteracts to wind forces, slowing down the opening or closing of the door
- Stack Pressure Compensation: operator counteracts to positive stack pressures, negative stack pressures, and sudden changes of stack pressures to maintain consistent door speeds
- Intelligent Trajectory Control: operator knows where the door should be at all times and adjusts torque accordingly. Dynamic braking helps cushion the door during opening to prevent going past 90 degrees, or during closing to prevent slamming.
- Extended Closing Torque (ECT): Besam's exclusive Extended Closing Torque (ECT) functionality provides extra torque in the last 10 degrees of closing, if needed, to close and latch the door. Speed remains constant so the door stays within ANSI standards.



- Latch Retry: if the door does not latch when closing, the SW200i will detect this condition and immediately open the door to 10 degrees and execute two attempts to latch the door.
- On-board timing sequencer
- On-board 12V or 24V transformer
- Low pass filter (i.e. "delay on make")
- Door position relay
- Kill input to close doors immediately
- Self-learning set-up – measures inertia and door weight
- Low Power Consumption (300 watts, 2.5 amp (max))

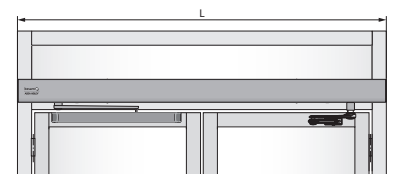


Door Set-ups:

Left: Single

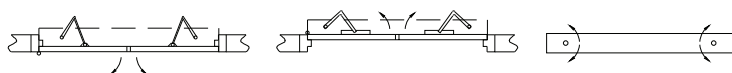
Below Left: Simultaneous Pair

Below Right: Pair Egress



Operation

- Automatic sensor activation (ANSI A156.10)
- Push plate activation (ANSI A156.19 or A156.10)
- Push and go feature allowing door to open automatically when operator senses movement of door (ANSI A156.19)
- Power assist open – provides easy to open push forces (ANSI A156.19)
- Internal, push to open, push to close (i.e., ratchet relay) (ANSI A156.19)
- Speed controlled Extended Closing Torque (ECT) to provide power assist close with on-board functionality to automatically adjust torque without increasing speed
- Loss of Power: the operator controls the door closing, preventing slamming of door
- Torque Limiting: if positive air pressure condition is removed, operator compensates accordingly and will not slam



Door Operator Handings

Electric Lock Management

- Lock monitoring prevents operator(s) from opening door(s) until release of electrified lock
- Operator pulls door closed before opening, unjamming electric latch hardware
- Sequenced operation between operators for pairs of doors allowing lock release and astragal coordination
- Electric Lock Output: selectable 12 VDC, maximum 1200 mA / 24 VDC, maximum 600 mA

Sensor Monitoring

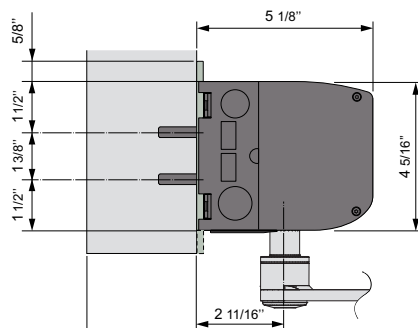
- Monitored Door Mounted Presence Sensors – upon detection of sensor failure, the operator will automatically revert to low energy mode
- Blanking Potentiometer: tells sensors on swing side of door when to shut off
- Sensor Recognition – learn process
- Torque Cancellation – Extended Closing Torque (ECT) is deactivated if signal is received from door mounted presence sensors of a possible obstruction

Aesthetics

- Aesthetically pleasing, low profile appearance: 4-5/16" (109mm) high by 5-1/8" (130mm) deep
- Continuous header for full width of door
- Same header/housing as Besam PowerSwing and Besam SW100 for consistent sightlines in your facility
- Finishes: anodized, powder coat, Kynar, clad

Configurations

- Surface Applied
- Overhead Concealed – center pivoted or offset pivoted doors
- Overhead Concealed – with emergency breakaway
- Side Load
- Bottom Load



Authorities

- UL/CUL approved
- UL Listed Fire Door Operator
- UL10C, UL325, UL991, UL244A, UL1998, UL1310
- IBC and CBC
- ANSI A156.10 / ANSI A156.19
- CAN/CSA-C22.2 NO 223-M91 and CAN/CSA-C22.2 NO 223-M92
- California State Fire Marshall

Sensor Packages

- Sensor Packages as follows:

ANSI A156.19

- Activation: push plates per your selection
- Safety devices: not required per ANSI. Optional door mounted presence sensors (DMPS) are available

ANSI A156.10

- Activation: push plates per your selection (motion sensors or push plates)
- Choice of Besam i-Adapt™ door mounted presence sensor system:
 - A202 – Besam i-Adapt Premium – stand alone, adapted field, door mounted presence sensors (DMPS)
 - A102 – Besam i-Adapt Flex – overhead presence sensor (OPS) and two door mounted presence sensors (DMPS) per leaf (approach and safety)
 - A101 – Besam i-Adapt Flex – overhead presence sensor (OPS) and one door mounted presence sensors (DMPS) per leaf (safety)
 - A100 – Besam i-Adapt Flex – Knowing Act applications – pair egress only – motion sensor approach and safety side for secondary activation per ANSI A156.10

Technical Specifications

Operator type	Electro-mechanical
Door width	36" – 48" (914 – 1219mm)
Door weight	100 – 700 lb (45 – 315 kg)
Power supply	120 V AC +10/-15%, 50/60 hz
Power consumption	Max. 300W
Auxiliary voltage	24 V DC, max. 700 mA
Internal control fuse	2 x T 6, 3 AH 250 V
Electro-mechanical locking device	Selectable: 12V DC, max. 1200 mA / 24 V DC, max. 600 mA
Door opening	Push: 80 – 110° with reveal 0 – 12" (0 – 305mm) Pull: 80 – 110° with reveal 0 – 5-1/8" (0 – 130mm) PAS: 80 – 95° (concealed application)
Opening time (0 – 80°)	Variable between 2 – 12 seconds
Closing time (90 – 100°)	Variable between 4 – 12 seconds
Hold open time	1,5-30 seconds
Ambient temperature	-31° F to 160° F (-35° C to 71° C)
Relative humidity	Max. 85%
Drive weight unit (non-condensing)	19.8 lb (9 kg)
This product is to be installed internally or externally with suitable weather protection.	
Class of protection	IP 20.
Complies with: ANSI/BHMA A156.19, ANSI/BHMA A156.10, UL325, UL 991, UL 244A, UL 1998, UL 1310, UL 10C, CAN/CSA-C22.2 NO 223-M91, CAN/CSA-C22.2 NO 247-92 and CA State Fire Marshall	



CM-54i
(with switch, square surface)



CM-55i
(with switch, square flush)



CM-57GR
(with switch, sound flush)

CM-54i, CM-55i AND CM-57GR ILLUMINATED PUSH PLATE KITS

FEATURES

- ILLUMINATED SURFACE AND FLUSH MOUNTING BOXES, COMPATIBLE WITH CAMDEN CM-45 AND CM-46 4 1/2" SQUARE AND CM-40 4 1/2" ROUND PUSH PLATE SWITCHES
- HIGH EFFICIENCY LED TECHNOLOGY
- IMPROVES SWITCH VISIBILITY, EVEN IN BRIGHT DAY LIGHT
- SELECTABLE 12 OR 24V AC/DC
- FLAME AND IMPACT RESISTANT POLYCARBONATE BOX
- SELECTABLE RED/GREEN ILLUMINATION COLOR (CM-54 AND CM-55 SQUARE MODELS)
- FIELD SELECTABLE ILLUMINATION (IDLE AND ACTIVE)
- CHANGE OF COLOR ACTIVATED DIRECTLY (BY SWITCH), OR REMOTELY (BY CONTROL RELAY OR ACCESS CONTROL SYSTEM)
- AUDIBLE (SOUNDER) CONFIRMATION OF SWITCH ACTIVATION (SELECTABLE 'ON' / 'OFF')
- FORM 'C' CONTACTS, RATED 3 AMPS.
- OPTION FOR LAZERPOINT RF™ WIRELESS TRANSMITTER
- DIRECT POWER CONNECTION FOR TX-9 TRANSMITTER MEANS NO BATTERIES REQUIRED
- OPTION FOR SIGNAGE FOR RESTROOM CONTROL APPLICATIONS

DESCRIPTION

Camden Door Controls, Aura™ CM-54i, 55i and 57GR square and round illuminated push plate kits provide high visibility and enhanced user convenience in ADA compliant automatic door and other applications. The enclosures provide field selection of "idle" color ("on" during the normal state) and "active" color ("on" when the switch is pressed or relay is activated), and an audible sounder and Form 'C' contact.

Aura™ illuminated mounting boxes are compatible with the widest range of 4 1/2" square and round All-Active™ push plate switches in the industry. Options include a complete selection of stock and custom graphic designs, and 9 architectural finishes (including polished brass and bronze).

SPECIFICATIONS

OPERATING VOLTAGE:	12 OR 24V AC/DC
CURRENT DRAW:	130mA.
LUMINA:	5760 MCD. (RED), 3780 MCD. (GREEN)
CONTACT TYPE:	1 FORM 'C'
CONTACT RATING:	3 AMPS @ 24V AC/DC
SOUNDER:	85DB
DIMENSIONS:	CM-54i: 5 1/4" H x 5 1/4" W x 2 1/8" D (133mm x 133mm x 54mm)
	CM-55i: 6 1/2" H x 6 1/2" W x 2" D (165mm x 165mm x 51mm)
	CM-57GR: 6 5/8" Dia. x 2" Dia. (168mm x 51mm)

ORDERING INFORMATION

AURA™ ILLUMINATED ENCLOSURES

CM-54i	SURFACE, 4 1/2" SQUARE, AURA™ ILLUMINATED. RED/GREEN
CM-55i	FLUSH, 4 1/2" SQUARE, AURA™ ILLUMINATED. RED/GREEN
CM-57GR	FLUSH, 4 1/2" ROUND, AURA™ ILLUMINATED. RED/GREEN

AURA™ ILLUMINATED SWITCH KITS - SURFACE MOUNT

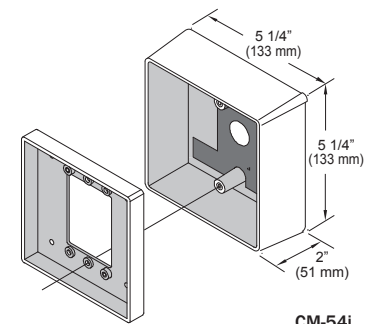
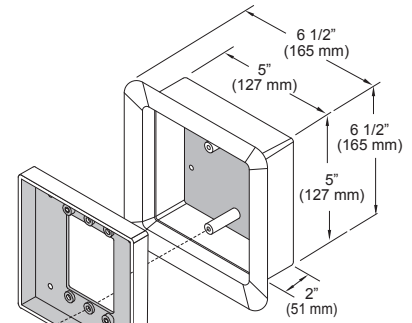
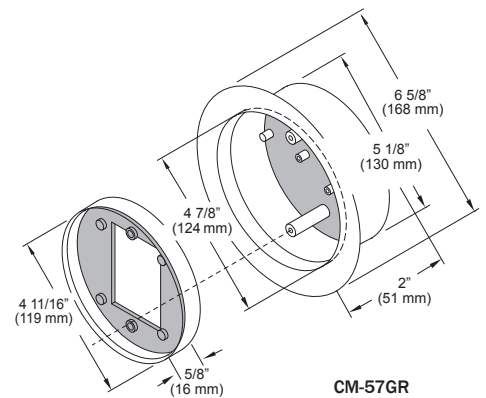
CM-45/X54	4 1/2" SQUARE PUSH PLATE (CONCEALED SCREWS)
CM-46/X54	4 1/2" SQUARE PUSH PLATE (EXPOSED SCREWS)

AURA™ ILLUMINATED SWITCH KITS - FLUSH MOUNT

CM-40/XGRF	4 1/2" ROUND PUSH PLATE
CM-45/X55	4 1/2" SQUARE PUSH PLATE
CM-46/X55	4 1/2" SQUARE PUSH PLATE

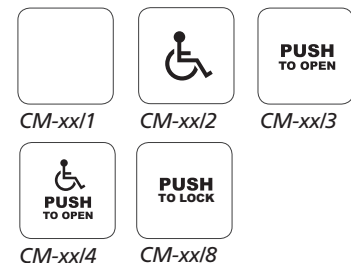
AURA™ RESTROOM CONTROL SIGNS

/SE1	ENGLISH, FOR CM-54 SQUARE SURFACE ILLUMINATED MOUNTING BOX. DOUBLE SIDED SIGN: 'DOOR LOCKED WHEN RED' / 'UNLOCKED WHEN GREEN' AND 'OCCUPIED WHEN RED' / 'VACANT WHEN GREEN'.
/SF1	FRENCH, FOR CM-54 SQUARE SURFACE ILLUMINATED MOUNTING BOX. DOUBLE SIDED SIGN: 'PORTE BARRÉE' / 'PORTE DÉBARRÉE' AND 'OCCUPÉ' / 'LIBRE'
/SFE1	ENGLISH, FOR CM-55 SQUARE FLUSH ILLUMINATED MOUNTING BOX. DOUBLE SIDED SIGN: 'DOOR LOCKED WHEN RED' / 'UNLOCKED WHEN GREEN' AND 'OCCUPIED WHEN RED' / 'VACANT WHEN GREEN'.
/SFF1	FRENCH, FOR CM-55 SQUARE FLUSH ILLUMINATED MOUNTING BOX. DOUBLE SIDED SIGN: 'PORTE BARRÉE' / 'PORTE DÉBARRÉE' AND 'OCCUPÉ' / 'LIBRE'
/FRE1	ENGLISH, FOR CM-57 ROUND FLUSH ILLUMINATED MOUNTING BOX. DOUBLE SIDED SIGN: 'DOOR LOCKED WHEN RED' / 'UNLOCKED WHEN GREEN' AND 'OCCUPIED WHEN RED' / 'VACANT WHEN GREEN'.
/FRF1	FRENCH, FOR CM-57 ROUND FLUSH ILLUMINATED MOUNTING BOX. DOUBLE SIDED SIGN: 'PORTE BARRÉE' / 'PORTE DÉBARRÉE' AND 'OCCUPÉ' / 'LIBRE'


CM-54i
(4 1/2" Square Surface)

CM-55i
(4 1/2" Square Flush)

CM-57GR
(4 1/2" Round Flush)

GRAPHIC OPTIONS

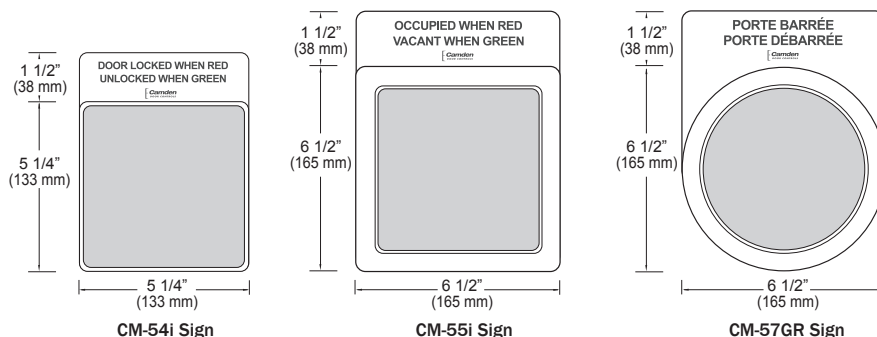
Stock graphic options for **CM-40**, **CM-45** and **CM-46** push plate kits at no extra cost: **I1, I2, I3, I4, I8**



Refer to catalog or web site for additional cost of other stock graphic options.

Contact Camden customer service for custom graphics, not shown in catalog.

Note: Not DPDT compatible. Enclosure will not accept DPDT contact option.



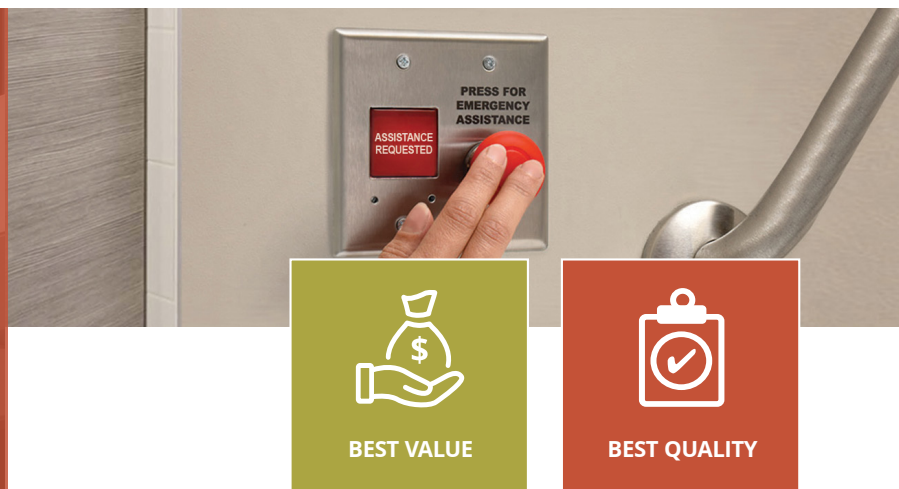
CM-AF500 Series LED Annunciators



Camden's CM-AF500 Series illuminated annunciators are designed to provide critical messages to building occupants.

When not illuminated, the sign (text and/or graphics) is invisible. When illuminated, the text/graphics are highly visible - even in bright daylight. CM-AF500 series signs and push buttons are weatherproof and vandal resistant.

Field selectable 12/30V AC/DC operation allows the sign to be used in a variety of low voltage applications, including automatic door, access control and other low voltage systems.



Features






- **CM-AF500:**
(6) message insert labels included, English, French and Bilingual
- **CM-AF503:**
Horizontal, curved, with (6) message labels
- **CM-AF501SO:**
'Assistance Required' label, with sounder
Adjustable 85dB sounder
- **Bright LEDs for high visibility, even in daylight**
- **Text /graphics are not legible when not illuminated**
- **Vandal and weather resistant construction**
- **3 year warranty**



SPECIFICATIONS

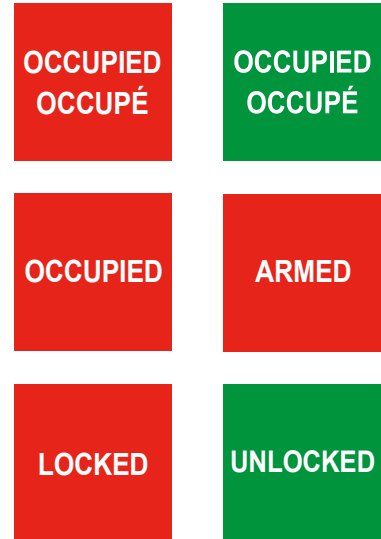
VOLTAGE:	12/30V AC/DC	STD FINISH:	US 32 / C32D
CURRENT DRAW:	CM-AF500 / AF550R: 30 - 50mA CM-AF501SO / AF540SO: 30 - 75mA	PUSH BUTTON:	CM-AF540SO: Maintained (Push/Pull), N/O & N/C, 6A @ 30 VDC CM-AF550R: Momentary (Spring Action) N/O, 6A @ 30 VDC
TEMP RANGE:	32°F - 176°F (0°C - 80°C)	DIMENSIONS:	CM-AF500 / CM-AF501SO: 4-1/2"H x 2-3/4"W x 9/16"D (114mm x 70mm x 15mm) CM-AF503: 3"H x 5-9/10"W x 1/20"D (76mm x 127mm x 1mm) CM-AF540SO / CM-AF550R: 4-1/2"H x 4-1/2"W x 9/16"D (114mm x 114mm x 15mm)
CONSTRUCTION:	18 gauge stainless steel faceplate		
SOUNDER:	CM-501SO / CM-AF540SO: Adjustable, 85dB @ 10cm max.		

MODELS

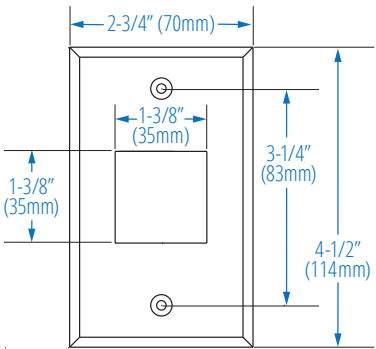
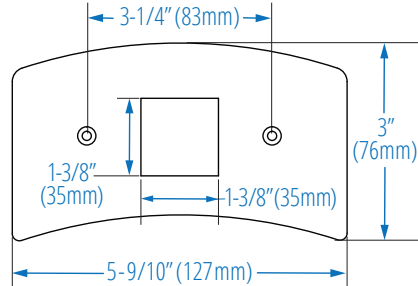
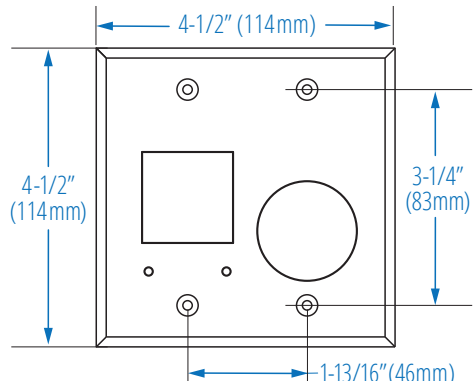
	CM-AF500	Single Gang LED Illuminated Annunciator. Labels included: 'Occupied/Occupé' (Red & Green), 'Occupied' (Red), 'Armed' (Red), 'Locked' (Red) and 'Unlocked' (Green).
	CM-AF503	Single gang, horizontal, LED illuminated annunciator, curved profile designed for use with Column™ switches. With (6) English, French, and Bilingual message labels.
	CM-AF501SO	Single gang LED annunciator with adjustable sounder, 'Assistance Requested'. Add suffix 'F' for French, suffix 'FE' for bilingual.
	CM-AF540SO	Double gang, push/pull mushroom push button, red, 'Assistance Required', annunciator and adjustable sounder, 'Assistance Requested'. Add suffix 'F' to model number for French language.
	CM-AF550R	Double gang, mushroom push button, red, 'Push to Lock', with LED annunciator. Add suffix 'F' to model number for French language.

GRAPHIC OPTIONS

CM-AF500 and CM-AF503 Inserts



DIMENSIONS

		
CM-AF500 / CM-AF501SO	CM-AF503	CM-AF540SO / CM-AF550R

1600 Series™ Electric Strike

*Works with all brands of
cylindrical and mortise locksets,
with or without a deadbolt*

Also available in
a Complete One
Box Solution



The 1600 Series electric strike accommodates up to a 1" deadbolt with enhanced vertical cavity spacing.

The 1600 Series Electric Strike sets a new standard in the industry by offering dynamic integrated adjustability and field configurable options compatible with any cylindrical or mortise lock. The modular design of the platform makes stocking and installing easier with interchangeable faceplates and accessories. For the first time, the aesthetics of an electric strike are complementary to other surrounding door hardware and blend in with the opening due to the fully finished design, available in eight finishes.

Features

Standard Features

- Stainless steel construction
- Tamper resistant
- Static strength 1,500 lbs
- Dynamic strength 70 ft-lbs
- Endurance 1 million cycles
- Field selectable fail safe/fail secure
- Non-handed
- Interchangeable faceplates and accessories
- Field replaceable components
- Fully finished faceplate, keeper, case and trim
- Field adjustable integrated shim
- Strike body depth 1-5/8" [41.3mm]
- SecuriCare five-year, no-fault, no questions asked warranty

Optional Features

- **LM** Lock monitor
- **DLM** Dual lock monitors
- **LMS** Lock monitor and strike monitor
- **DLMS** Dual lock monitors and strike monitor

Accessories

- **157** Torx screws
- **HESCU-MTK** Metal template kit
- **1600-104-xxx** Lip extension trim adapter (finish to match)
- **1600-106-xxx** 1006 adapter and trim enhancer kit (finish to match)
- **OPT-1SRK** Spring replacement kit
- **OPT-1LM** Single lock monitor
- **OPT-1DLM** Dual lock monitors
- **MOD-1SOL** Solenoid replacement module



Grade 1



SecuriCare
Warranty



Mortise Locks
with Deadbolt



Mortise Locks
without
Deadbolt



Cylindrical
Locksets



Field Selectable
(Fail secure
/ Fail safe)



Dual Voltage
12/24



PoE
Friendly



Fire Rated



Windstorm
Resistant



Outdoor
Rated



Burglary
Rated



ASSA ABLOY

Specifications

Certifications

- ANSI/BHMA A156.31, Grade 1
- UL 1034 burglary-resistant listed and suitable for outdoor use
- UL 294 listed
- RoHS compliant
- UL 10C fire rated, 3-hour single door (fail secure only)
- UL 10C fire rated, 1-1/2 hour double door (fail secure only)
- CAN/ULC-S104 fire door conformant
- NFPA-252 fire door compliant
- ASTM-E152 fire door compliant
- California Fire Marshal listed
- ANSI/SDI A250.13 windstorm resistant
- Florida Building Code approved TAS 201, 202, 203
- ANSI-ASTM E330

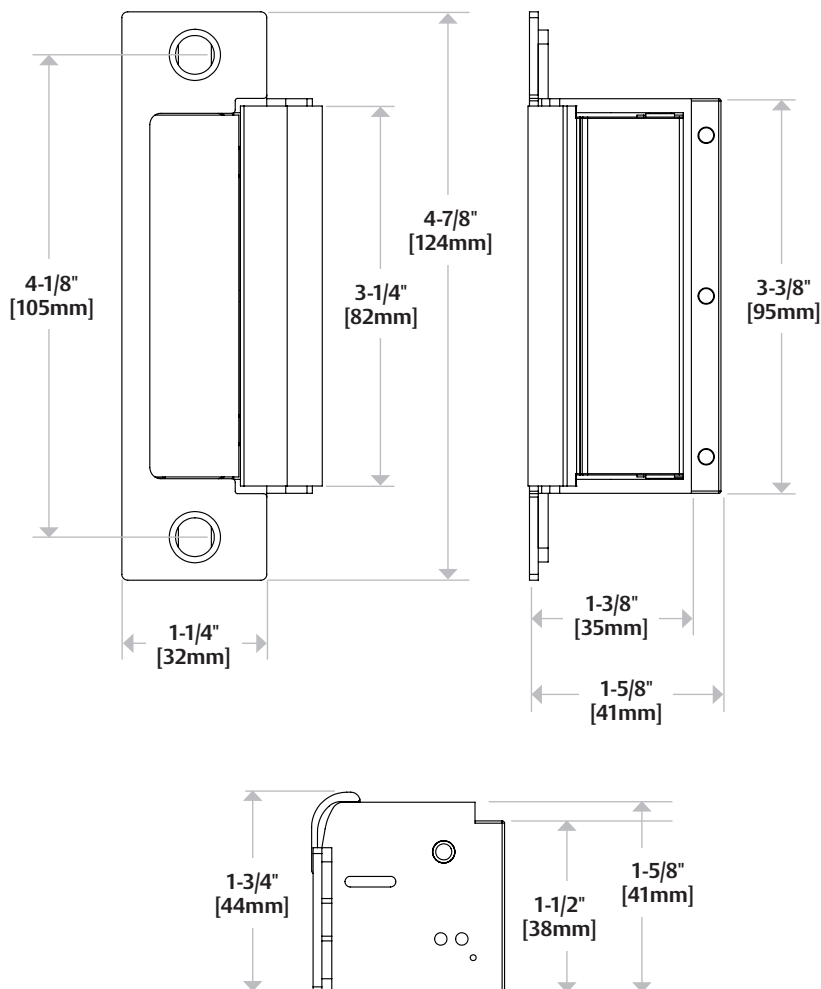
Frame Application

- Metal
- Wood

Electrical (DC Continuous Duty)

- Dual voltage 12/24 VDC/VAC
- 240 mA at 12 VDC/120 mA at 24 VDC
- PoE friendly

Dimensions



How to Order

SERIES	MODEL	FINISH*	OPTION (S)
1600	- CS	- 630	- LM
1600 Universal Electric Strike	(blank) Electric strike body only, faceplates ordered separately	605 Bright Brass	(blank) No Monitor
	CS* Complete Electric Strike; includes 1LB faceplate kit for latchbolts and 1DB faceplate kit for deadbolts	606 Satin Brass	LM Lock Monitor
	CLB* Complete Electric Strike for Latchbolt Locks; includes 1LB faceplate kit for latchbolts	612 Satin Bronze	DLM Dual Lock Monitor
	CDB* Complete Electric Strike for Deadbolt Locks; includes 1DB faceplate kit for deadbolts	613 Bronze Toned	LMS Lock Monitor and Strike Monitor
		613E Dark Oxidized Satin Bronze Powder	DLMS Dual Lock Monitors and Strike Monitor
		629 Bright Stainless Steel	
		630 Satin Stainless Steel	
		BSP Black Suede Powder	

*Complete Pacs are only available in the 630 finish

NOTE: Electric strike compatibility is determined at time of electric strike product release. ASSA ABLOY is not responsible for incompatibility of products that have changed in design or craftsmanship by their respective manufacturers. When compatibility is a concern, contact Customer Support for application assistance.



31G

Product Information

- Note:**
- Pull Plate
 - Aluminum, Brass, Bronze, Stainless Steel
 - Square Corner
 - 30S Plate
 - 1G Pull

Pull Plate
Square Corner
30S Plate, 1G Pull



Product Specifications

- Gauge:** - 0.050" (1.3 mm)
- Standard Sizes:**
- 3" x 12" (76 mm x 305 mm)
 - 3-1/2" x 15" (89 mm x 381 mm)
 - 4" x 16" (102 mm x 406 mm)
 - 6" x 16" (152 mm x 406 mm)
 - 8" x 16" (203 mm x 406 mm)
- Finishes:** - US3, US4, US10, US10B, US26, US26D, US28, US32, US32D
- Certifications:** - Meets ANSI A156.6 for J405 Pull Plate
- Fasteners:** - #6 x 5/8" OPH Tapping Screws

30S

Product Information

Options: - May be ordered cut for cylinder (CFC) or engraved "PUSH"

Square Corner - Beveled Push Plate



Product Specifications

Gauge: - .050" (1 mm)

Materials: - Aluminum, brass, bronze, stainless steel

Finishes: - US3, US4, US10, US10B, US26, US26D, US28, US32, US32D

Fasteners: - Six (6) #6 x 5/8" OPH Tapping Screws

Certification: - Meet ANSI A156.6 for J301 push plate

Product Size Options

Item #	Size (inches)	Size (mm)
30S/A30S	3 x 12	76 x 305
30S/A30S	3-1/2 x 15	89 x 381
30S/A30S	4 x 16	102 x 406
30S/A30S	6 x 16	152 x 406
30S/A30S	8 x 16	203 x 406

232W

Convex Wall Stop

Notes:

- Specify 232T for machine screw and toggle nut screw pack (10 pk)
- BL232W is 232W case quantity 50
- Concealed tamper proof mounting
- Easy installation by inserting screwdriver through small hole in bumper



PRODUCT SPECIFICATIONS

CERTIFICATIONS:

- Meets ANSI A156.16 for L02101

DIAMETER:

- 2-7/16" (62 mm)

PROJECTION:

- 1" (25 mm)

MATERIALS:

- Wrought brass, bronze, stainless steel with grey rubber bumper

FINISHES:

- US3, US4, US5, US9, US10, US10B, US15, US15A, US19, US26, US26D, US32, US32D

FASTENERS:

- One (1) #10 x 1-1/2" PPHWS with plastic and toggle anchor

Door Protection Plates



Door Protection Plate

Meets ANSI A156.6 J101 Metal Armor Plate; J102 Metal Kickplate; J103 Metal Mop Plate.

190S, 193S, 194S

196R (1/2" radius)

Mop Plate: 4" (102 mm) and 6" (152 mm) high, 1" (25 mm) less than door width

Kick Plate: 8" (203 mm), 10" (254 mm), and 12" (305 mm) high, 2" (51 mm) less than door width

Armor Plate: 14" (356 mm) to 48" (1219 mm) high

.050" (1.3 mm) Gauge Metal

Material: Aluminum, Brass, Bronze, or Stainless Steel

Finishes: All standard, see page 1X. (Note: US3 plates are not recommended for exterior application)

Options: May be ordered with counter sunk holes (specify "CSK") at extra charge.

Order: Furnish item number, height, width, and finish (i.e., 190S – 6" x 30", US32D).

Plates are sized on even inches. Odd size available and priced to next larger size.

198S

Same as 190S except:

.038" (0.8 mm) Gauge Stainless Steel

Material: Stainless Steel only.

Finishes: US32D.

220S, 223S, 224S

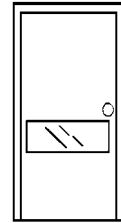
Same as 190S except:

.062" (1.6 mm) Gauge Metal

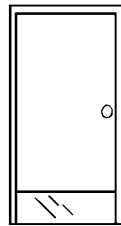
Material: Aluminum, Brass, Bronze, or Stainless Steel

Finishes: All standard, see page 1X. (Note: US3 plates are not recommended for exterior application)

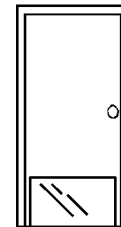
Item No.	B&S Gauge	US Gauge	Bevel	Fasteners	Quantity	
					Bag	Case
190S	16	18	none	#6 x 5/8 truss head screws	1 each	—
193S	16	18	B3E	#6 x 5/8 truss head screws	1 each	—
194S	16	18	B4E	#6 x 5/8 truss head screws	1 each	—
196S	16	18	none	#6 x 5/8 truss head screws	1 each	—
198S	—	20	none	#6 x 5/8 truss head screws	1 each	—
220S	14	16	none	#6 x 5/8 truss head screws	1 each	—
223S	14	16	B3E	#6 x 5/8 truss head screws	1 each	—
224S	14	16	B4E	#6 x 5/8 truss head screws	1 each	—



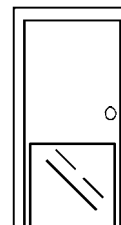
Stretcher Plate



Mop Plate



Kick Plate



Armor Plate

Door Protection Plate

Meets ANSI A156.6 J105 Plastic Armor Plate; J106 Plastic Kickplate; J107 Plastic Mop Plate.

204S

Mop Plate: 4" (102 mm) and 6" (152 mm) high, 1" (25 mm) less than door width

Kick Plate: 8" (203 mm), 10" (254 mm), and 12" (305 mm) high, 2" (51 mm) less than door width

Armor Plate: 14" (356 mm) to 48" (1219 mm) high

.125" (3.2 mm) Gauge Clear Plastic

Material: Clear plastic.

Finishes: Clear (specify "PC").

Options: May be ordered with counter sunk holes (specify "CSK") at extra charge.

Order: Furnish item number, height, width, and finish (i.e., 204S – 6" x 30", PC).

Plates are sized on even inches. Odd size available and priced to next larger size.

214S

Same as 204S except:

.125" (3.2 mm) Gauge Plastic Laminate

Material: Plastic laminate.

Finishes: Black (specify "PK"), Brown (specify "CO"), Gray ("PG").

Color selection for other than standard colors, are subject to minimum order quantity, priced on application.

225S

Same as 204S except:

.081" (2.1 mm) Gauge Kydex®

Material: Kydex®.

Finishes: Color selection for other than standard colors, are subject to minimum order quantity, priced on application.

Item No.	B&S Gauge	US Gauge	Bevel	Fasteners	Quantity	
					Bag	Case
204S	—	—	B4E	#6 x 5/8 truss head screws	1 each	—
214S	—	—	B4E	#6 x 5/8 truss head screws	1 each	—
225S	—	—	none	#6 x 5/8 truss head screws	1 each	—

26X

PH. 1-800-325-9995 or 1-314-772-4400 • Fax 1-800-782-0149 or 1-314-772-0744

"THE FIRST FAMILY OF SUPERIOR HARDWARE"

END OF SECTION 08710



End of Addendum no. 1