

LEGEND	
	POLE LIGHTS
	WALL LIGHTS
	PHOTOMETRIC VALUES (SHOWN IN FOOT CANDLES)
	ISOMETRIC LIGHT CURVES

SITE LIGHTING FIXTURE SCHEDULE:

TYPE P1 POLE LIGHT

- LAMP TYPE: PHILIPS 75W LED, FULL CUT-OFF, TYPE 4.
- MODEL: GARDOCO ECOFORM #ECF-1-2-55LA-4853-NW-UNV-BLP
- POLE: DYNAPOLE SSS #SSS4-20 (6m POLE)
- LUMINAIRE MOUNTING HEIGHT TO BE 7m ABOVE GRADE. REFER TO LIGHT POLE BASE DETAIL.

TYPE P2 POLE LIGHT

- LAMP TYPE: PHILIPS 55W LED, FULL CUT-OFF, TYPE 2.
- MODEL: GARDOCO ECOFORM #ECF-1-2-55LA-3253-NW-UNV-BLP
- POLE: DYNAPOLE SSS #SSS4-20 (6m POLE)
- LUMINAIRE MOUNTING HEIGHT TO BE 7m ABOVE GRADE. REFER TO LIGHT POLE BASE DETAIL.

TYPE P3 POLE LIGHT

- LAMP TYPE: PHILIPS 75W LED, FULL CUT-OFF, TYPE 4, INTERNAL SHIELD.
- MODEL: GARDOCO ECOFORM #ECF-1-4-75LA-4853-NW-UNV-BLP-IS
- POLE: DYNAPOLE SSS #SSS4-20 (6m POLE)
- LUMINAIRE MOUNTING HEIGHT TO BE 7m ABOVE GRADE. REFER TO LIGHT POLE BASE DETAIL.

TYPE W1 WALL LIGHT

- LAMP TYPE: PHILIPS GARDOCO 121 LED PERFORMANCE SCENCE - GENERATION 2 26W LED, FULL CUT-OFF, TYPE 3.
- MODEL: 120 LINE LED - #121-3-26LA-NW-UNV-BLP
- LUMINAIRE MOUNTING HEIGHT TO BE 2.6m ABOVE GRADE OR AS DIRECTED BY ARCHITECT. COORDINATE AND CONFIRM ALL LIGHTING LOCATIONS WITH ARCHITECT AND ENGINEER PRIOR TO COMMENCEMENT OF WORK.

TYPE W2 WALL LIGHT

- LAMP TYPE: PHILIPS GARDOCO 121 LED PERFORMANCE SCENCE - GENERATION 2 26W LED, FULL CUT-OFF, TYPE 4.
- MODEL: 120 LINE LED - #121-4-26LA-NW-UNV-BLP
- LUMINAIRE MOUNTING HEIGHT TO BE 2.6m ABOVE GRADE OR AS DIRECTED BY ARCHITECT. COORDINATE AND CONFIRM ALL LIGHTING LOCATIONS WITH ARCHITECT AND ENGINEER PRIOR TO COMMENCEMENT OF WORK.

TYPE W3 WALL LIGHT

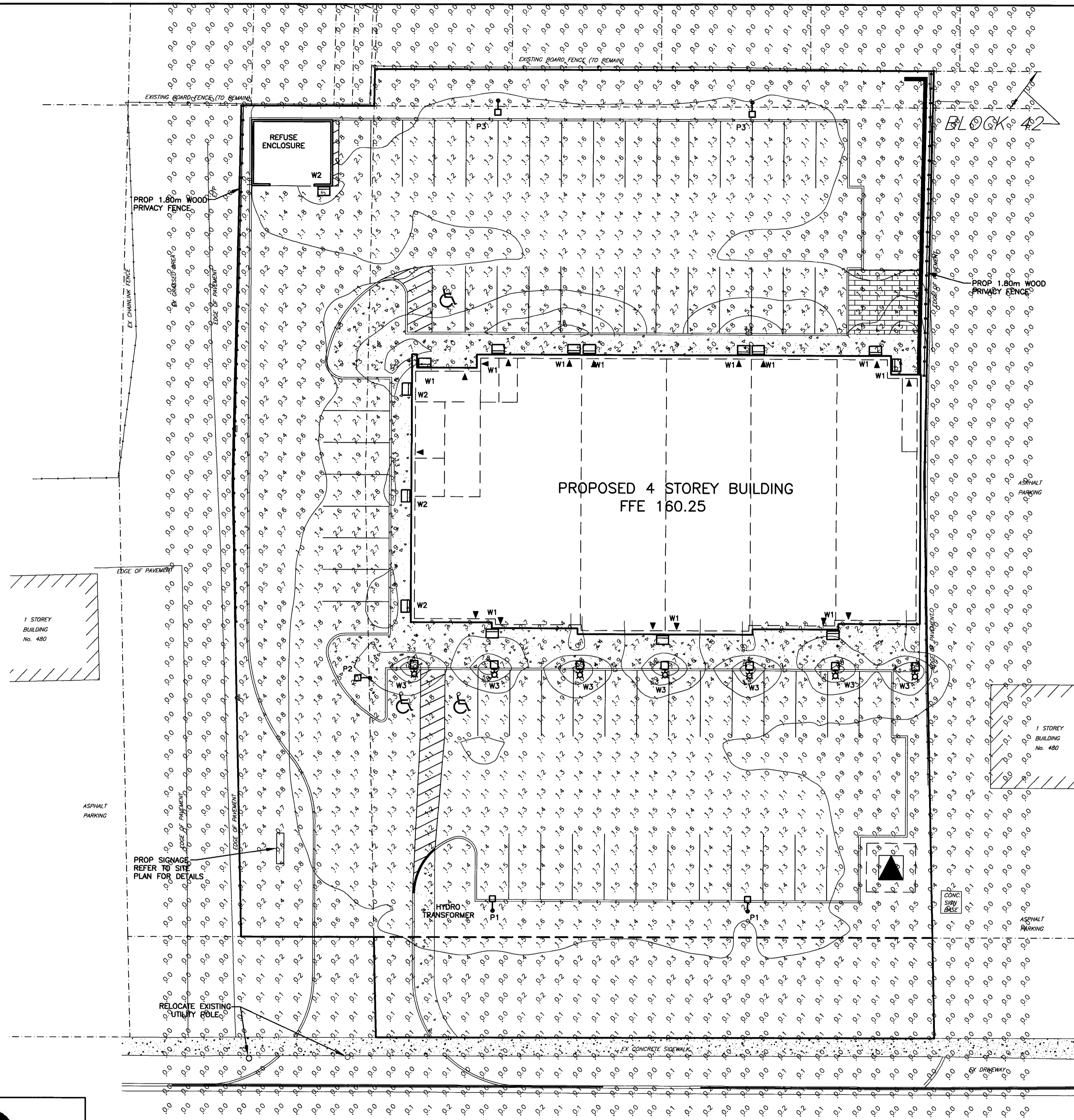
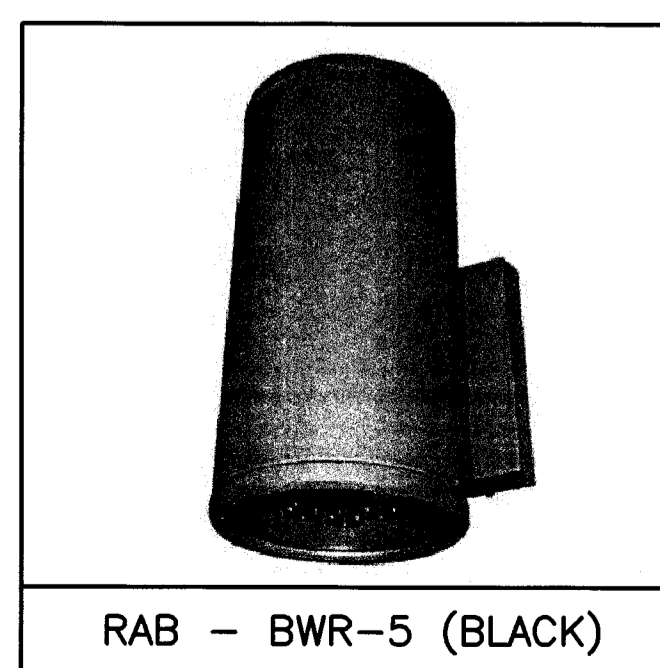
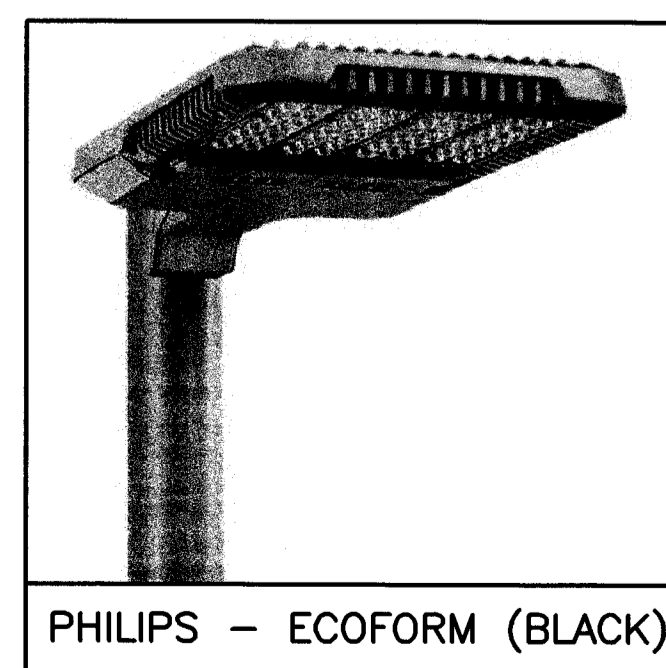
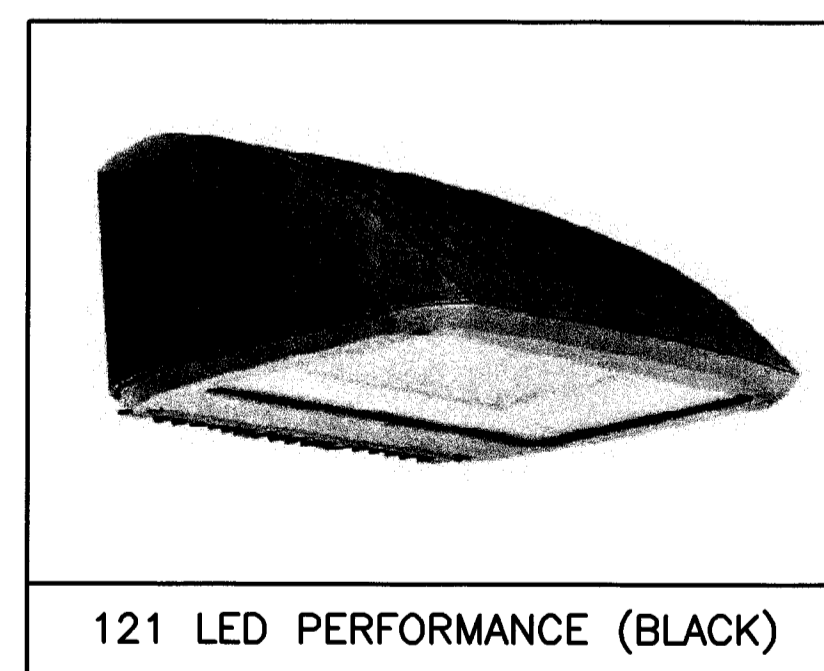
- LAMP TYPE: RAB DESIGN LIGHTING, FULL CUT-OFF, 6W LED.
- MODEL: BWR-5 - #BWR-5-W-BLP
- LUMINAIRE MOUNTING HEIGHT TO BE 3.4m ABOVE GRADE OR AS DIRECTED BY ARCHITECT. COORDINATE AND CONFIRM ALL LIGHTING LOCATIONS WITH ARCHITECT AND ENGINEER PRIOR TO COMMENCEMENT OF WORK.

SITE LIGHTING NOTES:

- ALL NEW OUTSIDE LIGHTS TO BE CONTROLLED BY BUILDING PHOTOCELL AND TIME SWITCH. COORDINATE CONTROLS AND POWER REQUIREMENTS WITH BUILDING DISTRIBUTION DRAWINGS.
- ALL PHOTOMETRIC VALUES ARE SHOWN IN FOOT CANDLES.

NUMERIC SUMMARY

	AVERAGE	MINIMUM	MAXIMUM	AVG/MIN	MAX/MIN
PARKING	1.4	0.06	8.7	22.51	138.79
WALKWAY	3.7	0.66	11	5.53	16.11

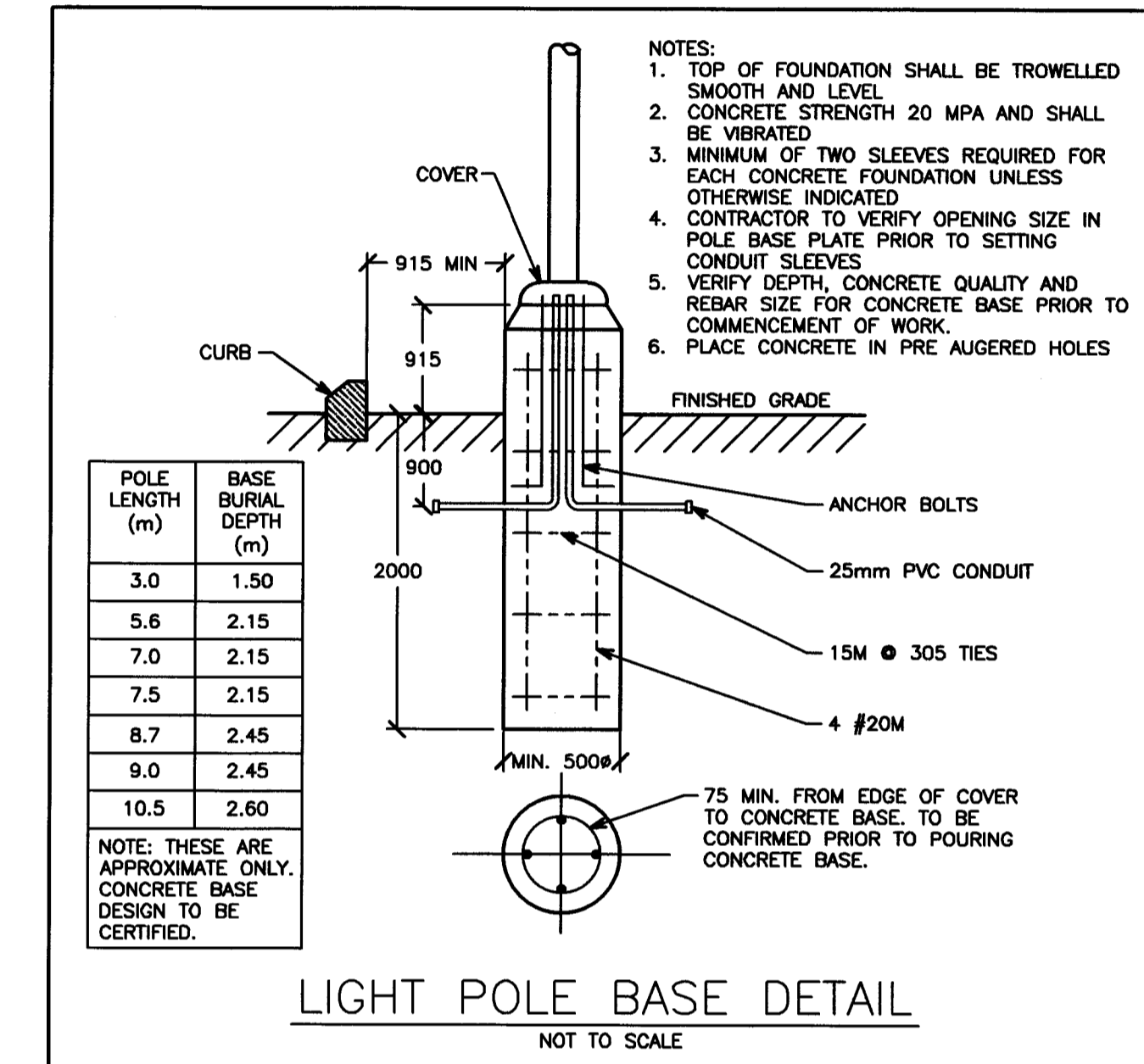
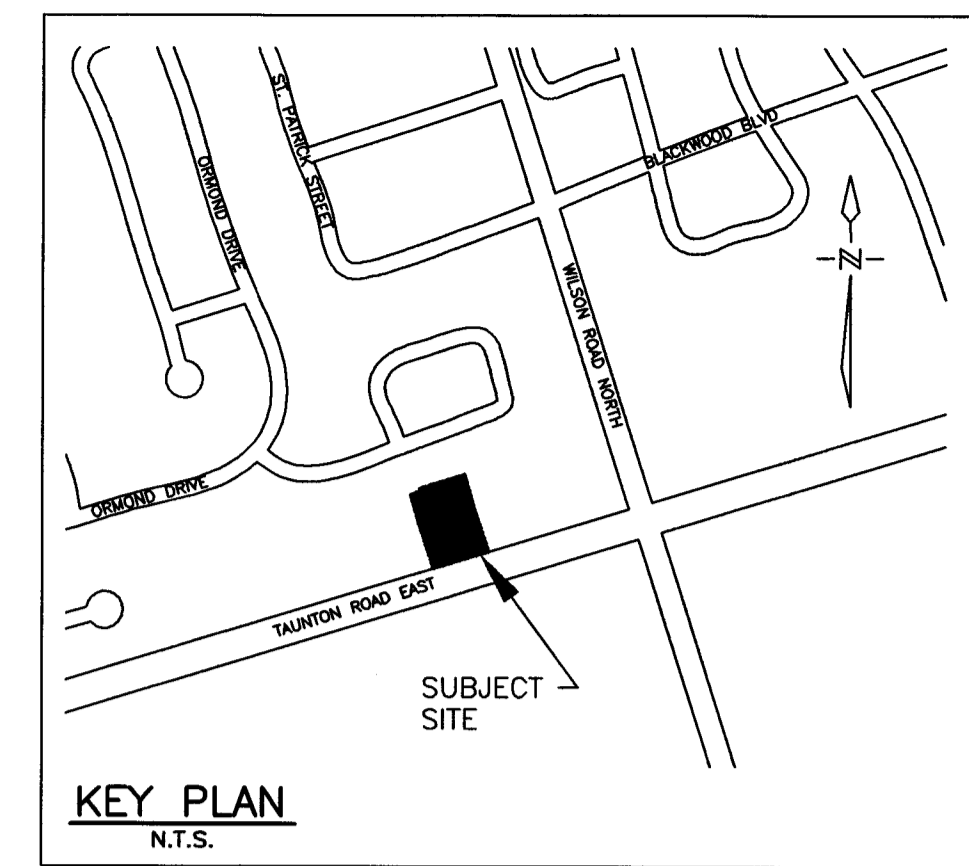


NOTE: CONTRACTOR TO REVIEW LIGHT FIXTURE SHOP DRAWINGS WITH CLIENT AND ENGINEER PRIOR TO COMMENCEMENT OF WORK FOR FINAL APPROVAL.

NOTE: FINAL LOCATIONS OF WALL MOUNTED LIGHTING TO BE APPROVED BY ARCHITECT AND OWNER PRIOR TO COMMENCEMENT OF WORK. TYPICAL.

NOTE: PHOTOMETRIC VALUES ARE SHOWN IN FOOT CANDLES WITH ISOMETRIC LIGHT CURVES

CONTRACTOR TO BE RESPONSIBLE FOR LOCATION OF ALL EXISTING UNDERGROUND & OVERHEAD UTILITIES. VARIOUS UTILITIES CONCERNED TO BE GIVEN REQUIRED ADVANCE NOTICE PRIOR TO ANY DIGGING. FOR STAKE OUT. THE CONSULTANT ASSUMES NO RESPONSIBILITY FOR THE ACCURACY OF THE LOCATION OF EXISTING UTILITIES AS INDICATED ON THIS DRAWING.



NOTE: ALL LIGHT FIXTURES SHOWN ARE FULL CUT-OFF AND NIGHT-SKY FRIENDLY

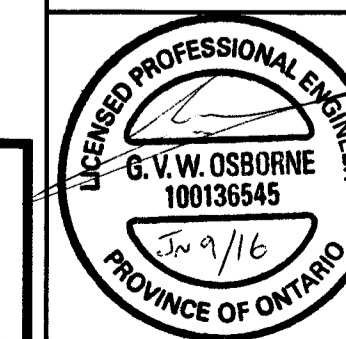
THIS DRAWING INDICATES ALL PROPOSED OUTDOOR LIGHTING FIXTURES FOR THIS PROPOSED DEVELOPMENT. THE LIGHTING DESIGN IS IN ACCORDANCE WITH THE APPLICABLE LIGHTING ZONE AS ESTABLISHED BY THE PLANNING DEPARTMENT, AND DESIGNED WITH AN AVERAGE TO MINIMUM RATIO IN ACCORDANCE WITH THE ILLUMINATING ENGINEERING SOCIETY GUIDELINES. THIS LIGHTING DESIGN WILL NOT CREATE ANY OBJECTIONABLE GLARE FOR ADJACENT PROPERTIES.

NO.	DATE	REVISION	BY

496 TAUNTON ROAD EAST, OSHAWA

**SITE LIGHTING
PHOTOMETRIC PLAN**

D.G. Biddle & Associates Limited
consulting engineers and planners
96 KING STREET EAST • OSHAWA, ON L1H 1B6
PHONE (905) 576-8500 • FAX (905) 576-9750
info@dgbiddle.com



SCALE: 1:200	PROJECT NO. 115147
DRAWN BY: B.C.A.	DRAWING NO. SL-1
DESIGN BY: B.C.A.	
CHECKED BY: G.V.W.O.	
DATE: JUNE 2016	

**PRELIMINARY
NOT FOR CONSTRUCTION**

\\NAVA\STAFF\JOB FILES\15000\115147\115147.DWG 115147 SITE LIGHTING.DWG 115147 ENGINEERING DRAWINGS\115147.DWG 115147 TAUNTON ROAD EAST\115147.DWG